

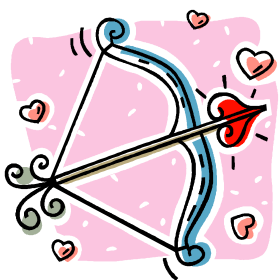
Santa Clara Valley Gem and Mineral Society

Send Exchange Bulletins to:

June Harris

107 Dell Way

Scotts Valley, CA 95066



Please Deliver Promptly

# BRECCIA

Santa Clara Valley  
Gem and Mineral Society



All American Club

Volume 53  
Number 2

San Jose, CA  
February 2006

# Breccia

## Santa Clara Valley Gem and Mineral Society (SCVGMS)

P.O. Box 54, San Jose, CA 95103-0054

Website: [www.scvgms.org](http://www.scvgms.org)

Email: [info@scvgms.org](mailto:info@scvgms.org)

Phone Number (408) 265-1422

### An Invitation

This society is pleased to invite guests to attend general meetings, study groups, and field trips. General meetings are normally held the fourth Tuesday of every month at 7:45 PM at 100 Belwood Gateway (The Cabana Club), Los Gatos, CA 95032. Belwood Gateway is just south of Blossom Hill Rd. between Leigh Avenue and Harwood Rd..

**Society Purpose:** The inculcation of a love of rocks and minerals by the furtherance of members' interests in the earth sciences and by education in all facets of related educational activities with the promotion of good fellowship, proper ethics, and conduct.

**Membership Requirements:** Attendance at two general meetings within twelve months. This society is a member of the California Federation of Mineralogical Societies (CFMS) and is affiliated with the American Federation of Mineralogical Societies (AFMS). Dues are \$10.00 per year.

**General Meeting:** will be on February 28, '06 at the Cabana Club, 100 Belwood Gateway, Los Gatos, CA 95032 at 7:45 PM.

**Board Meeting:** will be March 2, '06 at Marc Mullaney's home, 1685 Cross Way, San Jose, CA 95125 (408) 971-6651 at 7:30 PM.

### Study Groups

**Stringers:** meet on the second and fourth Wednesdays of the month. Groups led by Pat Speece. For info call Pat (408) 266-4327

**Facet Cutters:** meet on the first Tuesday of the month. Group led by Bill Norton. Call for info (408) 356-8254.

**Carvers:** meet on the third Monday of each month. Contact Herb Vogel (408) 247-1018 for information and details about joining this group.

**Cutaways:** meet on the first Saturday of the month at the Shoup Park Lapidary Shop. Group led by John Eichhorn. For more info call (408) 749-0523.

**Mineraleers:** meet on the second Monday of the month. Group is led by Chuck Boblenz. Call for info (408) 734-2473

**Silversmithing:** beginning and advanced classes are led by Kelly Van Vleck and John Bahr. Call Kelly for info (408) 262-8187.

**Juniors:** are led by Mark Wartenberg. Outings and get-to-gethers are announced at general meetings and via email. Contact Mark Wartenberg for more info (650) 568-6114.

**Fossileers:** will be meeting quarterly for an outing and a study session. For more info call Gail Matthews (650) 962-9960.

# John's Note

The new year is here, and we still need to fill committee positions. Activities are what make a club interesting. Your participating in planning and organizing events for the club is going to make the difference in everyone's enjoyment.

Field trips are an important part of any club, and we need people to help with this group. This year Field Trips will be run as a committee. Anybody with an idea can contact a committee member or join the group.

Monthly programs also needs help. Bill Gissler will work as a committee member, but he needs ideas and assistance with information on programs and scheduling. Join the group or contact him with any information you can provide. Check the committee list in the Breccia for the groups that need more members and information.

Frank Mullaney has resigned as a director and was nominated and elected into the position of Treasurer at our January Meeting. Thank you, John Eichhorn

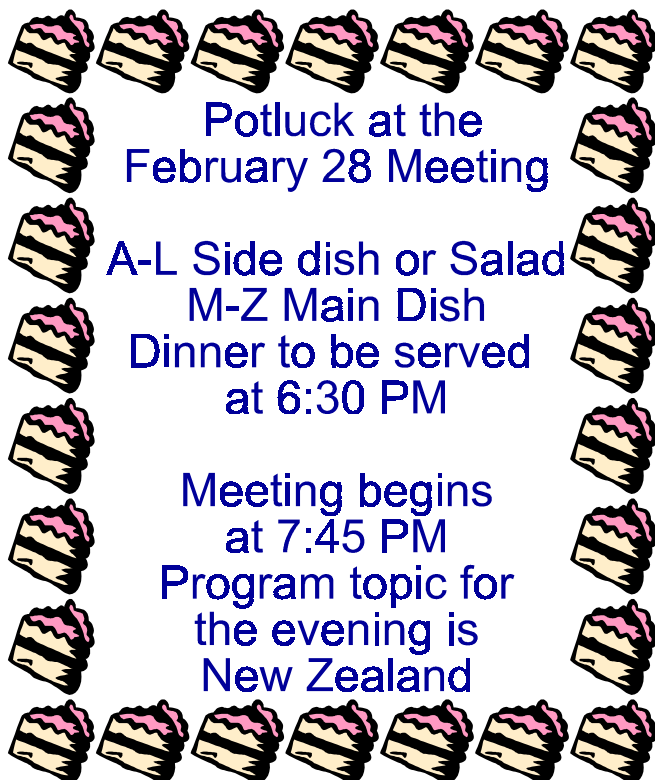
# June's Jabberings

Well, since it's a new year, I figured that I would start it off with a bang. As many of you have probably already noticed, the front cover of the Breccia has been revamped. The computer file for the previous front cover was huge, actually larger than the rest of the newsletter combined. I've struggled with changing it for the past year. The new cover can be sent over the Internet much easier, and will work better on our website.

Also, with adapting the front cover so that it also includes the mailing information, I've managed to free up one page of the newsletter. Thereby, on short news months, we can spend less on copying the newsletter for those members who still receive it via the US Postal Service.

In the next few months, I also plan to make some other changes, again to free up space and end duplication of information. So stay tuned and see if you can see the differences.

Thanks,  
June Harris



## Study Group Weekend

Our next Study Group Weekend will be Sunday, February 19, 2006, at the Cabana Club at 100 Belwood Gateway from 9 AM to 5 PM. All study groups should be represented at least part of the day. More details will be available by calling Marc Mullaney 408-971-6651. Our following Study Group Weekend will be May 4 and 5, 2006. This will be published at the Show, and a schedule will be available about a month earlier.

# Check out what our study groups are doing!!!

## MINERALERS BY CHUCK BOBLENZ



Four attendees were at the Jan 9th meeting where the topic was Wulfenite. A couple of specimens were passed around for viewing, and the features of each discussed. Details about the mineral were discussed, and each attendee received a copy.

The next meeting will be March 6th, and the topic will be Gold and Gold Panning. Discussions of a field trip to the Clear Creek area in the springtime was discussed and is to be pursued. Details will be released when available.

Refreshments were served by Jeri, and many discussions were continued around the kitchen table.



## Beginning Smithing Class by Pat Speece

Another round of Smithies 1 is revving up. Kelly Van Vleck and I will handle this round. There is a **mandatory** pre-meeting on February 6, 2006, 7 pm. At the pre-meeting, class members will be shown samples of every project, given a tour of the workshop, all the equipment and tools we will use, and become familiar with the safety issues involved.

**Recommended reading:** "The Complete Metalsmith" by Tim McCreight

**Sources: Tripps Catalog.** Call 1-800-545-7962 and ask them to send you their catalog

**Rio Grande Catalog.** Call 1-800-545-6566 and request their *Tools and Equipment Catalog*. Also ask for their *Gems and Findings Catalog*. It has raw materials.

**Wenrics** is a local general lapidary shop.

1008-B Blossom Hill Rd. San Jose 408-445-8075 [just west of the railroad tracks and miniature golf]

Hours: Tuesday - Friday 9:00-6:00 Saturday 9:00-5:00

Sunday and Monday - Closed

### Meeting date/ Skill

February 21 / solder instruction and practice

February 22/ soldering part 2 and sawing

February 27/ pierced band ring

March 1/ cabochon ring

March 6/ finish cabochon ring

March 7/ start pendant.— make bail

March 13/ finish pendant

March 14/ finish up projects and munchies

**Questions** call Kelly at (408) 262-8187 or Pat at (408) 266-4327.

## Faceters

The Faceters will meet on February 7 at Bill Norton's home, 276 Belblossom Way, Los Gatos 95032 at 7:30 PM. If you are interested in joining this study group, contact Bill at (408) 356-8254.

## CUTAWAYS

The Cutaways group will be meeting on February 4 and March 4 from 10-12 at Shoup Park. Call John Eichhorn at (408) 749-0523 for information and driving directions.

## Stringers 1 & 2 by Pat Speece



Here is a brief rundown of what's in store this year. Stringers 2006 will be off and running as of the mandatory pre-meeting February 15, 2006. Class members will be given wire for practice making eye-pins preparatory to our first class project. In March, we start out with the endless/bulk chain earrings and bracelets; in April, we make big bead pendants; a galaxy necklace is on the schedule for May; in June we will have a lesson on capped beads; in July we make inter-changeable earrings; and in August we wrap up with ribbon jewelry.

There is a \$15.00 materials fee. Classes meet from 7 to 10 PM the second and the fourth Wednesday of each month. On the second Wednesday: learn the technique. On the fourth Wednesday: make another project (theme and variation) using the current technique.

## Juniors Workshop & Rock Sale

When: Saturday, March 18th

Time: 10 AM to 4 PM

Location: Mark & Debbie's, 44 Hilltop Drive, Redwood City

Overview: We will have large amounts of collectible rocks and shells on sale at very low prices. All proceeds go towards our club annual scholarship to a San Jose State geology student. We will also be touring through our lapidary workshop and reviewing the three basic types of rocks. There will be free samples for everyone that participates!

\*Please come by and take a look at the beautiful rocks that will be available and tour through our rock polishing workshop. For more information, call Mark at (650) 568-6114. Thanks for your continued interest & support!!

## **Member Displays By Pat Speece (pitch hitting for Kelly VanVleck)**

Member Displays are usually a big interesting part of our general meetings. Be sure to display sometime each year! No experience necessary.

January's displays were: Show Hospitality has a modified signup sheet ready for your signature. Bill Gissler wants your input on subject matter for future programs. Tell Bill or use his checklist. Smithies 1 and Smithies 2 displayed projects and a green sheet for each. Signups accepted now. Tell Pat or Kelly you want to be a Smithie. Stringers 2006 displayed projects for this year. Tell Pat if you want to be a Stringer. June Warne and Nancy Borning displayed watch/bracelets and necklaces learned in Stringers 2005. Show Display Case signups are now available. Marc Mullaney had numerous baggies of cut slab pieces for sale. The rocks were donated to the club. Sales benefit the Scholarship Fund.

**You're on for February: Maxie Casey, Don Cox, Lynda DeiRossi, John Eichhorn, Ron Erickson, Dennis Ewell, Claire Ferguson and Gordon Snyder, Mary Lu Ferrara and Larry Knutson, and Robert Ferrario.**

---

## **January Program Reviewed By Bill Gissler**

The January program was a video called "The Exotic Terrane". The geologic term "exotic terrane" refers to a group of rocks, a fragment of a formation, that attaches itself to a tectonic plate and ends up at a new site, totally out of place from its origins.

The video traces the fascinating history of mysterious rocks in Hells Canyon region on the Oregon-Idaho border and provides an overview of tectonic activity along the Pacific coast. The video is actually two stories. It is first the story of the magnificent mountains along the Oregon-Idaho border. Second, it is the story of the geologists who pieced together the history of these mysterious rocks.

If you missed the January Meeting, but are interested in viewing the video, contact me at (408) 241-0477.

# **SUNSHINE**

Daymond and Pat Speece are very pleased to announce the birth of their first grandchild, Peter Daniel Steward. All is well.

Lon Mullaney has re-enlisted in the Army, and he and his wife, Michelle Powers, will be stationed in Germany. Frank and Julaine Mullaney are making plans to visit and tour Europe.

Ernestine Smith has been ill. We hope she is well soon. We look forward to seeing her at the February Meeting.

If you have information concerning any member who is ill, hospitalized, or has had a death in the family, please contact our new sunshine person, Ernestine Smith, (408) 395-5035.

## **February Program Previewed By Bill Gissler**

The country, geology, rocks, and gems of New Zealand will be our February 28 meeting program. Here is a chance to learn how this fascinating land rose from the sea through the forces of plate tectonic movement and volcanoes. Club member Bill Gissler, who recently returned from a 45-day trip to the "land down under," will display samples of New Zealand jade (greenstone), paua shells, kyanite and piedmontite rocks, and field guides on geologic features. This unique program is one that you won't want to miss.

If you have any rocks from New Zealand, please bring them for Member Displays. The more rocks, the better.

## **Member News**

We would like to welcome two new members to our club.

1. John Belcher 197 Friar Way, Campbell, CA 95008 JLBelcher@earthlink.net (408) 374-1685. John is interested in cutting and polishing and silversmithing.
2. Robert Belcher 197 Friar Way, Campbell, CA 95008 JLBelcher@earthlink.net (408) 374-1685. Robert is interested in cutting and polishing, silversmithing, and opal.



# 2006 Show Reports

**Show Chairman:** The show committee meeting was held at Marc Mullaney's home starting at 7:30 pm. We reviewed the new printed format for the Show Program. This format will give more detail as to where dealers are and give more club information as an inducement for new/prospective members. Dealer signups are doing well. We are nearing our maximum available number of tables/dealers.

Our main topic of discussion for the night was radio advertising. We have decided to go with KRTY and KBAY the week before the show. The total advertising costs for this will be \$2,500.00. We will also be tying in 20 promotion giveaways where each has a value of \$50.00. We will be using four show tickets and another item. Several members have agreed to donate some items to include Jade Cove necklaces and a sphere. Our next meeting will be February 16, 2006 at Marc Mullaney's (show chairman) home.

**Door Prizes:** Our show attendees love to win door prizes. We need approximately 40 door prizes. Our club additionally provides two cash door prizes of \$100 and \$50. We need members to provide nice rock, mineral, or fossil specimens or jewelry items like rings, earrings, bracelets, pendants, and necklaces.

Please give your name and a description of what you would like to donate to Suzi Papineau. She will be accepting door prizes between now and the show. Please include the name of the stone in the item you would like to donate. Let's make sure Suzi has plenty of items for the door prizes. Questions call Suzi (408) 267-1620.

**Hospitality Booth:** Do you like to meet new people? Are you friendly? Would you like to share your club knowledge with the public? Yes to any of the above questions? I need your help at the hospitality booth. We have developed a plan to try to increase club membership. We will be talking to people as they pass the hospitality booth. The objective is to get their email address for monthly reminders of the meetings and club events. If you would like be involved with the endeavor, contact June Harris at (831) 438-5150 or a club meeting.

**Touch and Feel Table:** John Eichhorn is overseeing this table. He needs large, heavy specimens of a variety of materials. If you have an unusual large rock that you would like to share at the touch and feel table, contact him at (408) 749-0523.

**Radio Advertising:** Adam Yamashita is collecting polishing rocks and jewelry to use in conjunction with this year's new radio advertising. We are advertising on two stations, KBAY and KRTY. Each station has agreed to hold contests where listeners would be able to win 4 tickets and a jewelry or rock prize (value at least \$50.00). We will get free adver-

tising for each prize we submit. Not only will we get air time promotions, but we will also get online advertising as well. The show committee envisions this particular form of advertising as very cost effective. If you have anything that you would like to donate, please contact Adam at (831) 335-9460.

**Lucky Dip:** Kelly VanVleck is gathering items for the Lucky Dip Table at the show. If you have anything that you would like to donate to this table at the show contact Kelly (408) 262-8187.

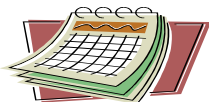
**Yard Signs:** Call Frank or Julaine, (408) 226-1791, if you have yard signs. They are making new stickers for the signs. Make sure you let them know the dimensions of the signs you have.

**Member Exhibits:** Lynn Toschi is in charge of member exhibits this year. He wants to encourage each and every member to participate. There really is no mystery about putting a case into the show. We are all members of this club because we are passionate about some facet of collecting, polishing, or displaying rocks, gems, and minerals. Now is the time for you to show your fellow members, and the public in general, what turns you on about this wonderful hobby.

The easiest way to get started is to take some space somewhere in your home, a table or a workbench for instance, and lay out the floor dimensions of 20" by 47", which is the size of the bottom of your showcase. Now the fun begins. Go through your collection, through all your drawers, cupboards, shelves, and workshops, and select 15 to 25 of your favorite specimens. These can be rare, eye-popping, jaw dropping gems, or they can be that little, polished beach agate that recalls a special memory from your trip to Oregon. Get those favorite specimens out of hiding, and let's show the public and our fellow rock enthusiasts why we love this hobby.

Now is the time to start getting ready to display. On our club website, you will find information on how to make case liners and a display case entry form. If you have questions on how to make display case liners, please feel free to call Lynn at (408) 353-3323, or if anyone has any comments or input, call Lynn. Display Case Entry forms are available online and at our regular meeting. If you can't get a form off the internet or at a club meeting, call Lynn. Please get your display forms in the mail immediately. Deadline for entries is March 10, 2006. Remember, this is YOUR show, PARTICIPATE, PARTICIPATE, PARTICIPATE !!!!!!!!!!!!!!!

# SCVGMS Calendar



**February 4** Cutaways meeting at Shoup Park 10-1  
**February 6** Mandatory Smithy meeting  
**February 7** Faceters meeting at Bill Norton's home at 7:30  
**February 15** Mandatory Stringers meeting  
**February 16** Show meeting at Marc Mullaney's home, (408) 971-6651 7:30  
**February 19** Study Group Demo Day 9-5 at the Cabana Club.  
**February 21** Smithy Class Begins  
**February 28** *Potluck at 6:30/Regular business meeting at 7:45 Program and speaker on New Zealand*  
**March 2** Board meeting at Marc Mullaney's home (408) 971-6651 7:30 PM  
**March 4** Cutaways meeting at Shoup Park 10-1  
**March 6** Mineraleer's Meeting at Chuck Boblenz home  
**March 8** Stringers class begins  
**March 11** Scholarship Booth Workshop and Rock Sale at Mark and Debbie Wartenberg's home.  
**March 18** Juniors meeting and rock sale at Mark and Debbie Wartenberg's home.  
**March 28** *Regular business meeting, program on Idaho Gems.*  
**March 30** Board meeting immediately after show setup at Fairgrounds  
**March 30-31** Show setup  
**April 1-2** Annual Show  
**April 22** Club outing CAL Day at University at Berkeley 9-4  
**April 25** *Potluck at 6:30 PM/ Regular business meeting at 7:45 PM Program and speaker on Yemenite Jewelry.*  
**April 27** Board meeting at Randy and June Harris (831) 438-5150 at 7:30  
**May 6-7** Study Group Demonstration Weekend 9-5 at the Cabana Club  
**May 23** *Regular business meeting at 7:45 Program on Oregon Thundereggs*  
**May 25** Board meeting location TBD  
**June 3-4** USGS Open House at Menlo Park 9-5

## Scholarship Booth Workshop & Special Rock Sale

When: Saturday March 11, 2006  
Workshop 10-2PM, Sale 2-5PM

Where: Mark & Debbie's Place  
44 Hilltop Drive  
Redwood City

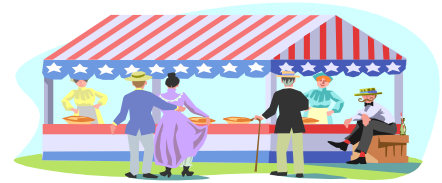
Overview: We will be making polished rock jewelry spiders, magnets, and other items for the scholarship booth. There will also be a potluck lunch, and afterwards members will have the first opportunity to purchase rock & mineral items from two recent large donations.

What To Do: If you want to join in on the fun, please call us to RSVP and let us know what you can bring for the potluck. We have everything else that you will need for the workshop, but you may want to bring a bucket or two because there is plenty of great material for sale at "rock-bottom" prices!

This year's scholarship recipients are  
Ms. Shannon Leslie  
and  
Ms. Nikkii Bechtold.  
Both these young ladies are San Jose State University students who are studying geology.  
Congratulations !!!

# CFMS Show Schedule

**Changes to this calendar are printed in italics. For the latest version of the CFMS Show Schedule go to [www.cfmsinc.org](http://www.cfmsinc.org)**



February 17-26 2006, Indio, CA San Geronio Mineral & Gem Club "Date Festival" Riverside County Fair & Date Festival Gem & Mineral Bldg. #1, 46-350 Arabia Street, Hours: 10 - 10 daily Gert Grisham (951) 849-1674 E-mail: [grish1@msn.com](mailto:grish1@msn.com)

February 25-26 2006, Antioch, CA Antioch Lapidary Club Contra Costa Co. Fairgrounds 1201 West 10th Street Ellen Bauer (925) 458-2539 Email: [jbauer@wwdb.org](mailto:jbauer@wwdb.org)

March 3, 4, 5 2006, Hayward, CA Mineral and Gem Society of Castro Valley Centennial Hall, 22292 Foothill Blvd, Hayward, CA Hours: Fri. & Sat. 10am - 6pm Sunday 10am - 5pm Ron Miller (510) 887-9007 Publicity Chair: Larry Ham Email: [mgscv@yahoo.com](mailto:mgscv@yahoo.com) Show website: [www.mgscv.com](http://www.mgscv.com)

March 4-5 2006, Ventura, CA Ventura Gem & Mineral Society Seaside Park Ventura Co. Fairgrounds Hours: Sat 10-5, Sun 10-4 Jim & Nancy Brace-Thompson (805) 659-3577 Web Site: <http://www.vgms.org>

March 4-5, 2006, Arcadia, CA Monrovia Rockhounds Inc. Los Angeles County Arboretum & Botanical Garden 1 block South of I-210, Foothill Freeway near Santa Anita Race Track 301 North Baldwin Ave. Arcadia, CA 91007 Hours: Sat. 9-4:30, Sun. 9-4:30 Janie Duncan 626-358-8157 Email Jo Anna Ritchey: [j.ritchey@verizon.net](mailto:j.ritchey@verizon.net) Website: [www.moroks.com](http://www.moroks.com)

March 10, 11, & 12 2006, Victorville, CA Victor Valley Gem & Mineral club Stoddard Wells (11 miles east of I 5) Hours: Fri. & Sat. 8 - 5; Sun. 8 - 2 Joe Kosik (760) 241-0894

March 11-12 2006, San Marino, CA Pasadena Lapidary Society San Marino Masonic Center 3130 Hunting Drive Hours: Sat 10 - 6, Sun 10 - 5 (626) 355-6964 or (626) 914-5030 Todd Neikirk (323) 256-4992

March 11-12 2006, Turlock, CA Mother Lode Mineral Society Stanislaus County Fairgrounds 900 N. Broadway Hours: 10 - 5 both days Bud & Terry McMillin (209) 524-3494 Email: [terrymcmillin@yahoo.com](mailto:terrymcmillin@yahoo.com) Web Site: [www.motherlodemineralsociety.com](http://www.motherlodemineralsociety.com)

March 11-12 2006, Salinas, CA Salinas Valley Rock & Gem Club Annual Show, Spreckels Veterans Memorial Bldg. 5th and Llano Street Hours: 10 - 5 both days Jim Bassett (831) 758-5830 Email: [jbmsc@sbcglobal.net](mailto:jbmsc@sbcglobal.net)

March 11-12 2006, Escondido, CA Palomar Gem & Mineral Club Army National Guard Armory 304 Park Avenue Hours: Sun. 10 - 5; Sat. 10 - 4 Van Lynch (760) 749-4164 Email: [michelleandvan@hotmail.com](mailto:michelleandvan@hotmail.com) Show Website: [www.palomargem.org](http://www.palomargem.org)

March 18-19 2006, Bakersfield, CA Southern San Joaquin Lapidary Society 4th Annual Bakersfield Rock & Gem Rendezvous Kern County Fair Grounds 1142 South P Street & Bell Terrace Gates 28, 29 & 30 Hours: 9 - 5 both days

March 25-26 2006, Roseville, CA Roseville Rock Rollers 44th Annual Gem & Mineral Show Nature's Wonders Roseville (Placer County) Fairgrounds 800 All American City Blvd Hours: Sat 10 - 6, Sun 10-4

April 1 2006, Porterville, CA Porterville Gem & Mineral Society Play Day Hosting Diamond Pacific Tool Corp. 318 N. Kessing St. Hours: 10 - 4 Rob Milner (559) 359-6174 Email [rdmilner@verizon.net](mailto:rdmilner@verizon.net)

**April 1-2 2006, San Jose, CA Santa Clara Valley Gem & Mineral Society, Santa Clara County Fairgrounds 344 Tully Road Hours: 10 - 5 both days Marc Mullaney (408)971-6651 Email [GEOLOGISTM@aol.com](mailto:GEOLOGISTM@aol.com)**

*April 8-9 2006, Paradise, CA Paradise Gem & Mineral Club Gems & Jewelry Show Veterans Memorial Hall Skyway & Elliott Road Hours: Sat 10 - 5; Sun. 10 - 4 Jim & Shirley Thompson (530) 872-1846 Email [shirley1846@comcast.net](mailto:shirley1846@comcast.net)*

*April 22-23 2006, Lancaster, CA Antelope Valley Gem & Mineral Club Antelope Valley Fairgrounds 2551 West Avenue H Hours: 9 - 5 both days Pamela Birge (661) 264-3502 Email [birgep@att.net](mailto:birgep@att.net) Show Website: [www.geocities.com/av\\_gem](http://www.geocities.com/av_gem)*

April 29-30 2006, Santa Cruz, CA Santa Cruz Mineral & Gem Society Corner of Center & Church Streets Hours: 10 - 5 both days Sallee Brumbaugh (831) 336-5662

*May 6-7 2006, Bakersfield, CA Kern County Mineral Society Art in Stone Kern County Fairgrounds 1142 South P Street Hours: 10 - 5 both days Buster Ordiway (661) 563-8310 Email [CaOrdPTA@aol.com](mailto:CaOrdPTA@aol.com)*

May 13-14 2006, Reno, NV Reno Gem & Mineral Society "Jackpot of Gems" Reno Livestock Events Center Exhibit Hall 1350 N. Wells Ave. Hours: Sat. 10 - 5; Sun. 10 - 4 John Peterson

May 19, 20, 21 2006, Anderson, CA Superior CA Gem & Mineral Association Shasta County Fairgrounds Hours: Fri/Sat. 9 - 5; Sun. 10 - 4 Steve Puderbaugh (530) 365-4000

May 20-21 2006, Yucaipa, CA Yucaipa Valley Gem & Mineral Society Yucaipa Community Center 34900 Oak Glen Road Hours: Sat. 9 - 5; Sun. 10 - 4 William Jochimsen (909) 790-1475 Email [bjm2285@aol.com](mailto:bjm2285@aol.com)

May 20-21 2006, Newbury Park, CA Conejo Gem & Mineral Club Borchard Park Community Center 190 Reino Rd. Hours: Sat. 9-5 Sun. 10-4:30 Sal Scarpato (818) 707-9972 Email [SALSCARPATO@SBCGLOBAL.NET](mailto:SALSCARPATO@SBCGLOBAL.NET)

*May 27-29 2006, Weaverville, CA Trinity Gem & Mineral Society Annual Bigfoot Gemboree Hours: Sat/Sun. 10 - 5; Mon. 10 - 4 Jack Jennewein (530) 778-3786*

*June 3-4 2006, Glendora, CA Glendora Gem & Mineral Show 859 E. Sierra Madre Hours: Sat. 10 - 5; Sun. 10 - 4 Bonnie Bidwell (626) 963-4638 Email: [YBidwell2@aol.com](mailto:YBidwell2@aol.com)*

June 3-4 2006, La Habra, CA North Orange County Gem & Mineral Society Jubilee of Gems Show La Habra Community Center 101 W. La Habra Blvd. Hours: 10-5 both days Don Warthen (626) 330-8974 Email: [warthen@earthlink.net](mailto:warthen@earthlink.net)

**June 9-11 2006, CFMS Show at Angels Camp, CA Calveras Gem & Mineral Society Calveras Co. Fairgrounds Hours: 10-5 daily Website: [calaverasgemandmineral.org](http://calaverasgemandmineral.org)**



# Truth and Some Consequences

## By Jon Spunaugle, AFMS Conservation and Legislation Chair

Via the AFMS Dec 2005/Jan 2006 Newsletter

Some talking points on: The Paleontological Resources Preservation Act, Senate Bill S-263 now being considered by the U. S. House of Representatives Natural Resources Committee.

This Bill is, for all practical purposes, identical to the fossil bills considered by the 108th Congress in 2003-4. Therefore, past comments by previous AFMS and ALAA (American Lands Access Association) reviewers applies to this latest introduced Bill, S-263. Again, as in the last Congress, the Bill was passed by the U.S. Senate by voice vote and has been referred to the U.S. House of Representatives for consideration and possible passage. In the last Congress several reviewers called it a "bad bill" primarily because it criminalized fossil collecting with outrageous penalties for picking up a fossil on public land. The Bill was also criticized for its reward provisions for turning in violators, which seemed ripe for abuse. Those same statements apply to the current version.

The S-263 Bill has some good points and some bad points. For someone like myself, who helped write the first version of the "rockhound" fossil collecting bill, and worked to defeat the so called "Baccus Bill" in 1992-3, I can clearly see some improvements. Several of the objections the amateur fossil collecting public voiced to the original 1992-3 Bill have been remedied in this latest S-263 version. However, several of the remaining "rockhound" objections remain a part of Senate Bill S-263 as passed by the U.S. Senate. Some of the remaining objections to the Bill S-263 in its current form are:

The Bill fails to make any distinction between scientifically significant and commonly found fossils. Instead it defines the paleontological resource it would protect to mean "any fossilized remains, trace, or imprints of organisms preserved in or on the earth's crust"...except for archaeological resources or those associated with an archaeological resource. (The latter are covered under an archaeological resources protection act passed many years ago). Casual collecting of a reasonable amount of common invertebrate and plant fossils may be allowed under this Bill in Section 5, at the discretion of the Secretary (the land managers). Therefore amateurs "may" be able to collect certain common invertebrate or plant fossils found on Federal lands, but not necessarily. Only hand tools could be used and collecting can not cause more than a "negligible surface disturbance" (undefined). Collecting common vertebrate fossils such as fish fossils, sharks teeth and the like, would be a violation of the act, as would picking up a isolated single dinosaur bone fragment in the badlands of the western United States if it was on Federal land.

All other collecting of paleontological resources on Federal lands would require a permit issued by the Secretary (the land managers) and be given only to "qualified" applicants. The resources collected would remain the

property of the United States with the resources collected and the associated data deposited in a approved repository when collected under a permit.

Further, there would be no commercial collection of fossils allowed. This would preclude anyone, amateur or otherwise, from selling, trading, or bartering any fossil collected on federal land. Not only does this effect amateurs, but completely eliminates the valuable and considerable contributions to paleontology that commercial fossil entities have provided in the past in discovering, extraction, and preparation of fossils. The Dinosaur "Sue" a Tyrannosaurus Rex, is a perfect example.

Penalties for criminal violation of any provisions of this Bill would result in fines in accordance with Title 18 of the U.S. Code and/or imprisonment for up to 10 years. Title 18 provides for fines ranging up to \$5,000 and up to \$10,000 in certain circumstances, or up to \$250,000 in certain cases. Such cases would be tried in Federal Courts.

Civil penalties are also provided in the Bill and can go as high as double the replacement cost or restoration cost of the resource involved, The value is to be determined by the land managers. No due process is required under the civil penalty provisions other than a required notice of a hearing. A judicial review petition is allowed only within a thirty day period following any civil penalty assessment, but the court is allowed to rule only on the evidence presented in the hearing report. Forget "innocent until proven guilty" and the right to a trial by your peers.

The Rewards and Forfeiture Section, Section 9, allows the Secretary of Interior or Secretary of Agriculture to pay a reward for information leading to a civil (or criminal) penalty. Rewards can go as high as \$500. So, you might want to look out for any neighbors who don't like you if you have any vertebrate fossils in your collection, especially, if you cannot prove where they came from. Most fossils I know of don't say "Made in China" or "Hocho en Mexico" on them. And, how many of you kept receipts on items purchased, or can you vouch for exactly where the vertebrate fossils really came from even if you did purchase them and can prove it?. The Bill calls for a person to exercise "due care" in knowing if the resource was excavated or removed from Federal land. Again "due care" is undefined.

Also subject to forfeiture under this Bill are "paleontological resources with respect to which a violation... occurred and which are in possession of any person and all vehicles and equipment of any person that were used in connection with the violation". I'm not a lawyer, but I do have knowledge of what has happened to several collectors and to several hobbyists in the past with regard to property confiscated, rightly or wrongly. In most cases nothing was ever returned regardless of its being legally obtained.

So, I worry for fossil collectors if this Bill, S 263.

becomes law. The best way to prevent its passage in its present form is for each and everyone of us to communicate your feelings to your Congressional Representatives. A copy of the Bill is found on the Internet by using any of the Internet search engines, Google, yahoo, msn, etc.

There is nothing new on the other issues we are following including the America the Beautiful Pass and legislation that would restrict public access to federal lands. js

**Notice!!!**  
**A new club directory is now available at club meetings. If you are unable to attend meetings, but would like a new directory, call Randy Harris at (831) 438-5150, and he will mail one to you.**

## **SAFETY ARTICLE by Don Monroe**

Via Dec2005/Jan 2006 AFMS Newsletter, Be Safe-Be Well

### **“METAL SMITHING – IS IT DANGEROUS?”**

Students in my beginning silver classes often ask if the class is dangerous. The answer to this question can be both yes and no. If you listen to the instructions given by the instructor, it is very unlikely that any sort of injury will result but we must always be aware and be very careful because minor injuries are not uncommon.

We all learned, probably before age two, that fire will burn you, as will hot metal, hot water and all other hot things. I open each new class with a brief lecture discussing the things in the classroom that can cause an injury. Students will often be afraid of the torch and need some instruction and encouragement when soldering. I always tell them that while the torch is an obvious hazard, it is really not the piece of equipment that is responsible for most injuries. During the years I have been teaching, I have never had a student suffer a serious injury but we do not want to see even small cuts, scrapes or burns. Almost all of the injuries result from polishing equipment used improperly. A buffing machine will “grab” a piece of jewelry being polished and sling it away and can cause severe injuries if it snags a finger or hand in the process. Surprisingly more buffing/polishing injuries result from the flexible shaft machines. While using a Foredom, Dremel, or similar machine with small buffing wheels or cratex-type wheels, the edge of the piece will catch the wheel and run around behind the piece being polished. This often results in a bent mandrel, that can hit the hand and cause a nasty cut.

Eye injuries are a category where none of us pro-

vides enough care for ourselves and those around us. We should wear safety glasses or some type of eye protection. We all know that, but so few of us do what we should. I must confess that I am not as religious about eye protection as I should be.

We use a variety of chemicals in our workshops and some of them deserve more caution than we give them. Think about the following list:

Pickle solution for cleaning silver. ( it is an acid you know!)

Flux for cleaning silver definitely requires ventilation to avoid breathing dangerous fumes.

Blackening or other solutions used to create a patina.

Alcohol and acetone which are not only flammable but should not be breathed.

These are just a few of those that we use. Should we not read the MSDS sheets (Material Safety Data Sheets) that come with many of the products? If we don't get the MSDS for new materials we purchase, I am sure that suppliers will jump at the opportunity to send us one. It is the law!

The last type of injury that I want to discuss is the common cut. Almost everything we handle can cause a cut. Paper cuts are most annoying and can become infected. Knives, jeweler's saws, broken glass and sharp edges of work pieces can open cuts. We keep first aid supplies handy and, for ourselves, we use super glue. Not being licensed medical personnel we do not treat the students with super glue but we describe for them the potential benefits. My dermatologist ( who saved my life ) uses super glue for small incisions with great success. It is my understanding that this material was actually developed for battlefield use in Viet Nam and I have been impressed with it. Might be worth having a discussion with your physician and get his (or her) opinion.

# Single Item Competition Rules

The Society is establishing single item competition for each of our study groups. This is to encourage members to participate in our show and to display their work when they are not able to put in an entire case yet.

## **As previously published: the following rules apply to each of the categories:**

All competitors shall be Santa Clara Valley Gem & Mineral Society members.

Each competitor shall be limited to one entry for each award offered. Each entry shall have been made within the last two (2) years. All workmanship must be done by the competitor. Each entry must be labeled with the name of the material, and items submitted need to have two labels, one with the competitor's name and one without the competitor's name and with the material name.

All items will be judged by the Uniform Rules of the American Federation, and each item will start with 100 points. We are listing below the points which will apply to each group's entries:

### **Mineraleers:**

These are the points for Thumbnail Minerals as listed in the Rules:

Labeling, 15; Showmanship, 15; Quality, 70.

### **Cutaways:**

These points are the most used in the Lapidary section:

Labeling, 5; Showmanship, 15; Quality, 25; Variety, 10; Workmanship, 45

### **Silversmiths:**

These points apply to the majority of the Jewelry category:

Labeling, 15; Showmanship, 15; Quality, 10; Variety, 15; Workmanship, 35; Design, 10

### **Fossileers:**

These points are the most commonly used in the Fossil section:

Labeling, 30; Showmanship, 10; Quality, 30; Rarity, 5; Variety, 20; Reference List, 5

### **Facet Cutters:**

These points apply to the Faceted Stones:

Labeling, 5; Showmanship, 10; Quality, 10; Workmanship, 65; and Variety, 10

### **Carvers:**

Labeling, 5; Showmanship, 10; Quality, 10; Workmanship, 65; and Design, 10

### **Stringers:**

Labeling, 10; Showmanship, 10; Quality, 10; Workmanship, 55; and Design, 15

Some of these points are somewhat arbitrary, and we may find that they need to be adjusted, but this should give us a good start. I would like to explain that the Showmanship category covers the way your piece is set up for display. All of the items will be in a case with other items which are similar, and you need to be sure that your piece is shown as well as possible.

Please get your application in to the Chairman, Ruth Bailey, as soon as possible, and you will need to have an application for each piece you are displaying. If you have questions, give Ruth a call at 408-248-6195. Items to be judged must be given to Ruth Bailey on setup day.

## See the Show, Visit the Mother Lode

Via CFMS Newsletter 01/06

There is more than just the CFMS Show in Angels Camp next June. Much more!!! We have a whole county full of things to do and see. When you come up to attend the 2006 CFMS show in Angels Camp be sure to allow enough time to visit our many attractions. While I know it's difficult to pry your eyes off the awesome displays and intriguing items for sale stay a day longer and treat those eyes to what us fortunate locals enjoy. You will be minutes away from 2 state parks: Big Trees State Park with its huge sequoias and Columbia State Park which is a working gold rush era town.

We are also home to a growing wine industry and many offer tasting rooms. One winery you can't miss is Ironstone Winery which is located 15 minutes away in Murphys as it houses a giant 44 pound ( yes pound) nugget inside their museum. They also have stamp mills and water wheels on the beautiful grounds.

For those who play golf, there are several great courses including Greenhorn Creek in Angels Camp, Forest Meadows in Murphys and Saddle Creek in nearby Copperopolis. If you feel adventurous you can cool off in one of our many caverns such as Moaning Cavern or California Cavern that is just 15- 20 minutes away. There are 2 casinos approx. 30 miles away (when you need to win some money to purchase another rock), just follow the signs to Jackson Rancheria or Black Oak Casino.

And don't forget the wonderful National Park that is in this area: Yosemite, so bring the kids and vacation in the beautiful Sierra Mountains. This area boasts of many lakes and hiking and biking trails so there is truly something for everyone at this year's Federation Show. For more info see [www.gocalaveras.com](http://www.gocalaveras.com) Remember to practice hopping those frogs and definitely hop up to Calaveras this June 9,10 & 11.

---

## Bus Trip Planned to the CFMS Show in Angels Camp

Our club is subsidizing a bus trip to the CFMS Show in Angels Camp on June 10, 2006. There are 45 seats available for our members. The cost for members and their guests is \$10.00 per person, and Junior members are free. This cost is for only the bus trip. Additional expenses, including food and the show entrance fee, are the attendees responsibility. Juniors must be accompanied by a responsible adult. The bus will leave the Moonlight Shopping center (at the intersection of El Camino Real and Keily Blvd) in Santa Clara at 7:00 AM sharp and will return around 7:00PM. **Be prepared to be at the shopping center at least 15 minutes early.** Please send the below form and your check to the address below immediately, as any unfilled seats will be offered to neighboring clubs as of March 1. Your seat will only be held with a check. **Deadline for reservations is April 25 meeting. Seats are available on a first come, first served basis. Get your checks in immediately.**

.....  
Please make your checks out to: SCVGMS  
Send you check to Herb Vogel, 2242 De Paul Place, Santa Clara, CA 95051

Please reserve the following seats:

Adult member or any guest (non member/any age) \_\_\_\_\_ X \$10.00 = \_\_\_\_\_

Number of SCVGMS Junior Members \_\_\_\_\_

Name of attendees: \_\_\_\_\_

## Treasure Scoops For Sale

Our club is putting together an order for Treasure Scoops (formerly known as Estwing Gem Scoops). If we order together we can save on shipping and postage. The Treasure Scoops cost \$34.95 plus shipping and handling. For those of you who are unfamiliar with The Estwing Gem Scoop or the Treasurer Scoop, it is a scoop on the end of an aluminum shaft. It's 36" long, rust proof, and has a red vinyl handle grip. It's great for scooping rocks from under rocks (where there might be a rattle snake) or from out of a stream bed, or sifting through sand. Most rockhounds with a Treasure Scoop highly recommend it.

If you are interested in ordering a Treasure Scoop, contact Randy or June Harris at (831) 438-5150. Orders must be placed by February 28, 2006. Get a check to Randy or June soon to place your order.

## Upcoming Rock-Related Events

April 22 9AM—4PM Cal Day (Open House) at UC Berkeley. Start at the Life Science Building for the museum of Paleontology and continue through many other departments on the campus. Neat Dinosaur exhibits. Check out their website for more information, [www.berkeley.edu/calday](http://www.berkeley.edu/calday).

June 3-4 9AM-5PM USGS Menlo Park Open House. United States Geological Survey's Open House. Many exhibits and activities, all related to geology, maps, collections of specimens. Family Activities [Http://openhouse.wr.usgs.gov/](http://openhouse.wr.usgs.gov/) Above is the website to for more information about this event.

### Early Fish Wormed Its Way Into New Locomotion

Via The Trilobite 01/06, Summary of Milwaukee Journal-Sentinel Article from Monday, September 12, 2005

Recent evidence has turned an old idea on its head. Scientists always believed that prehistoric fish first started dragging their way onto land around 300 millions ago by wagging their bodies from side to side, fish-like, while slithering their bellies along the ground. Reanalysis of fossil skeletons from these test pilots for terrestrial locomotion suggests that the creatures had enough strength in their primordial limbs to hold their bodies off the ground. This means that early fish probably pulled themselves forward like giant inchworms, extending and contracting their two foot long bodies.

The first fish to make a stab at living on land was the long-extinct ichthyostega which made its home in Eastern Greenland. The animal probably pulled itself forward with its appendages and followed up with a catch-up move from the rear. Eventually scientists hypothesize, it may have managed a primordial walking gait, with diagonally synchronized limb movements. Whatever it did, it worked for a while, but after its 15 minutes of fame as the world's first documented four-legged creature, the ichthyostega disappeared.

### Pyrite Suns

Via The Lithics 4/99, via the Rocky Reader 9/00, via the Rock Collector 12/00, via Grant Co. Rolling Stones date unknown

Pyrite Suns are found in the coal mines of Sparta, Illinois at the 300 foot level in a very narrow seam laying on top of the coal vein. Miners in four mines bring them out in their lunch buckets, thus preserving what would otherwise be destroyed in the mines. Originally thought to be marcasite, research by the Smithsonian Institute has proven them to be pyrite and, therefore, very durable. Surrounded by black shale and coal, a very difficult cleaning process unveils their hidden beauty. Dating in age to 35 million years old, one of the present theories of origin has them as a pyritized fossil replacement of a lily pad. Their natural beauty lends them to a variety of jewelry making ideas.



**Santa Clara Valley Gem and Mineral Society**  
**General Meeting minutes**  
**January 24, 2006**

President John Eichhorn called the meeting to order at 7:45 PM at the Belwood Cabana Club in Los Gatos. Members and guests were welcomed. Minutes were approved as printed in the Breccia. The Board meeting will be at Ruth Bailey's home Thursday January 26<sup>th</sup> at 7:30 PM.

**New Members:** None

**Hospitality:** There were 33 members and 9 guests in attendance tonight.

**Correspondence:** We received show fliers from other clubs, CFMS Scholarship Fund recognition for a donation, The Gem Shop postcard regarding Agates by Johann Zenz, Martin Zinn Expositions flier, Lapidary Journal Club information form, Mineral Information Institute Teaching materials catalog, and a letter of resignation for Frank Mullaney.

M/ S/ P to accept the resignation of Frank Mullaney from the Board of Directors.

M/ S/ P to nominate Frank Mullaney for Treasurer for 2006. Hearing no other nominations from the floor, Frank Mullaney is elected Treasurer. There is now an open position for a Director on the Board.

Scholarship candidate Shannon Leslie gave a brief personal history.

**PLAC:** See details in the Breccia

**Study Groups:** There will be a Study Group Demonstration on February 19<sup>th</sup>. See details in the Breccia.

**Show Report:** Marc Mullaney gave a report on the 2006 show. See details in the Breccia.

**Field Trips:** Adam Yamashita is chairing the field trip committee. Let him know where you want to go.

There are several committees that have openings including Field trips, Programs, 2007 Show Chairman, and others. Talk to John Eichhorn if you would like to help.

There will be a Pot Luck Dinner before the February meeting. See details in the Breccia.

The new directories have been printed. See Randy Harris to get your copy.

Scholarship candidate Nikkii Bechtold gave a brief personal history.

**Sunshine Report:** Ernestine Smith is ill. Daymond and Pat Speece have a new grandchild. Lon Mullaney has reenlisted and is being stationed in Germany.

There will be a Scholarship workday and rock sale at the Wartenbergs on March 11<sup>th</sup>.

**Member Displays:** Nancy Boring and June Warne showed some of their most recent beadwork.

**Program:** The program for tonight was "Exotic Terrane", a video about the geology of eastern Oregon and Idaho.

Meeting was adjourned at 9:15 PM

Respectfully submitted,  
Randy Harris, Secretary

---

**Santa Clara Valley Gem and Mineral Society**  
**Board Meeting Minutes**  
**January 26, 2006**

President John Eichhorn called the meeting to order at 7:40 PM at the home of Ruth Bailey. All board members were present except Lynn Toschi, Larry Moore, and Jane Yamashita. Also present were Ann Marie Mullaney, Bill Gissler, Herb Vogel, and Montella Lopez. Minutes for the December 8, 2005 meeting were approved as read.

**Audit Report:** M/ S/ P to accept the audit report for 2005. Discussion was held on maintaining a stock of beads for the stringers. M/ S/ P to table discussion until next meeting.

**Treasurer's Report:** M/ S/ P to adopt the proposed expense and income projection as a guideline for 2006.

M/ S/ P to pay the bills.

**Communications:** None

**New Members:** M/ S/ P to accept John Belcher and Robert Belcher for membership.

**Committee Reports:** M/ S/ P to sponsor a bus trip to the CFMS Show in Calaveras. There will be a \$10 charge to reserve a seat on the bus. This trip will be opened to other clubs after the February meeting. Other field trips were discussed. M/ S/ P to have Marc Mullaney reserve a group campsite for a Thanksgiving trip to Jade Cove.

**PLAC:** See details in the Breccia.

**Founder's Day:** M/ S/ P to approve July 16<sup>th</sup> for the Founder's Day Barbecue. M/ S/ P to advance \$300 to June Harris to cover Founder's Day purchases.

**2006 Show:** The next show meeting will be February 15<sup>th</sup> at Marc Mullaney's home at 7:30 PM. Discussion of a memento bag for Demonstrators.

**Unfinished Business:** There was discussion about an event calendar to be posted at the meetings. There will be a Study group workshop on February 19<sup>th</sup>.

**New Business:** There will be a Potluck before the February Regular meeting. M/ S/ P to approve \$80 for a program to be given by Yehuda Hassa. Discussion of programs at upcoming meetings and the show. There was discussion about the progress of the "Got Rocks" brochure and the Gem Scoops from the Fundamental Rockhound.

M/ S/ P to Adjourn at 9:40 PM

Ruth Bailey served refreshments that were enjoyed by all.

Respectfully submitted,  
Randy Harris

---

Santa Clara Valley Gem and Mineral Society  
Treasurer's Report  
January 22, 2006

Beginning Balance:			\$20,883.81
Receipts:			
	06 Show Dealers	<u>610.00</u>	
Total Receipts:			\$610.00
Disbursements:			
	Museum Membership	112.00	
	Trailer Storage	1,560.00	
	06 Show Publicity	<u>2,250.00</u>	
Total Disbursements:			\$3922.00
Ending Balance:			\$17571.81

# Santa Clara Valley Gem and Mineral Society 2006

## ELECTED OFFICERS

President: John Eichhorn  
(408) 749-0523  
email: johneichhorn@earthlink.net  
Vice President: Marc Mullaney  
(408) 691-1584  
email: Geologistm@aol.com  
Secretary: Randy Harris  
(831) 438-5150  
email: randysparky234@netscape.net  
Treasurer: Frank Mullaney  
(408) 266-1791  
email: rockyfiv@aol.com  
Editor: June Harris  
(831) 438-5150  
email: Juneconeyharris@yahoo.com  
Federation Director: Ruth Bailey  
(408) 248-6195  
email: rba51825@aol.com  
Alternate Fed. Director: Frank Monez  
(408) 578-7067  
email: Frankm2@sbcglobal.net  
Directors:  
Larry Moore (650) 941-4966  
email: w6od@sbcglobal.net  
Pat Speece (408) 266-4327  
email: sparkylarky@sbcglobal.net  
Lynn Toschi (408) 353-3323  
email: opalking@earthlink.net  
Jane Yamashita (408) 353-2982  
email: leikili5@aol.com  
Position Open  
Historian: Anna Windsor  
(408) 926-8624  
Parliamentarian: OPEN

## COMMITTEE HEADS

Field Trip Committee Coordinator: Adam Yamashita  
Field Trip Committee: John Eichhorn, Randy and June Harris, Jennifer House  
Founder's Day Picnic Food: June and Randy Harris, Jane and George Yamashita  
Founder's Day Picnic Raffle: OPEN  
Founder's Day Bingo: John Eichhorn  
Hospitality: Rich and Niki Santone  
Installation Dinner: Kathy McChristian  
Juniors: Mark and Debbie Wartenberg  
Gary and Kathy McChristian,  
Librarians: June Warne and Nancy Boring  
Member Display: Kelly VanVleck  
PLAC (Public Lands Advisory Committee)  
Frank Monez  
Program: Bill Gissler  
Refreshments: Claire Ferguson  
Sargeant-at-arms: Hershall Boring  
Show 2006: Marc Mullaney  
Show 2007: OPEN  
Silent Auction: John and Sylvia Palmieri  
Social Committee: June Harris, Claire Ferguson  
Sunshine: Ernestine Smith  
Trailer Custodian: Herb Vogel  
Trophies: Frank Mullaney  
Webmaster: RK Owen

Breccia Crew: Editor: June Harris (juneconeyharris@yahoo.com)  
Editor Address and Phone#: 107 Dell Way, Scotts Valley, CA 95066, (831) 438-5150  
Proofreaders: Linda Spencer (LSpencer@best.com)  
Assembly and Mailing Staff: Ruth Bailey and Bill Norton  
Exchange Editor: June Harris, 107 Dell Way, Scotts Valley, CA 95066

Permission to copy is freely granted to American Federation of Mineralogical Societies (AFMS) affiliated clubs when proper credit is given.