

Santa Clara Valley Gem and Mineral Society

Send Exchange Bulletins to:
June Harris
107 Dell Way
Scotts Valley, CA 95066



Please Deliver Promptly

BRECCIA

Santa Clara Valley
Gem and Mineral Society



All American Club

Volume 54
Number 2

San Jose, CA
February 2007

SCVGMS ELECTED OFFICERS

President: Randy Harris
(831) 438-5150
Vice President: Marc Mullaney
(408) 691-1584
Secretary: John Eichhorn
(408) 749-0523
Treasurer: Frank Mullaney
(408) 266-1791
Editor: June Harris
(831) 438-5150
Federation Director: Ruth Bailey
(408) 248-6195
Alternate Fed. Director: Gail Matthews
(650) 962-9960
Directors:
Rick Kennedy (408) 529-9690
Larry Moore (650) 941-4966
Dean Welder (408) 353-2675
Matt Wood (408) 744-9402
Jim Ziegler (408) 528-4907
Historian: Linda Spencer (408) 997-7319
Parliamentarian: Bill Gissler (408) 241-0477

SCVGMS COMMITTEE HEADS

Donation Receiving Committee Chairman:
George Yamashita
Field Trip Committee Coordinator:
Dean Welder
Field Trip Committee: Randy and June Harris, John Eichhorn, Marc Mullaney
Financial Advisory Committee: Ruth Bailey, Chuck Boblenz
Founder's Day Picnic Food: Carol Pimentel
Founder's Day Picnic Raffle:
Founder's Day Bingo: John Eichhorn
Hospitality: Claire Ferguson
Installation Dinner: Open
Juniors: Gail Matthews and Marsha Owen
Librarian: Pat Speece
Member Display: Jim Ziegler
PLAC: (Public Lands Advisory Committee)
Frank Monez
Program: Bill Gissler
Refreshments: Marsha Owen and Denise Osterback
Secret Auction: Donation Receiving Comm.
Sergeant-at-arms: John Eichhorn
Show 2007: Marc Mullaney
Show 2008: Open
Silent Auction: John and Sylvia Palmieri
Social Committee: June Harris, Claire Ferguson
Sunshine: Ernestine Smith
Trailer Custodian: Herb Vogel
Trophies: Frank Mullaney
Webmaster: RK Owen

Santa Clara Valley Gem and Mineral Society

P.O. Box 54, San Jose, CA 95103-0054

Website: www.scvgms.org

Email: info@scvgms.org

Phone Number (408) 265-1422

An Invitation

This society is pleased to invite guests to attend general meetings, study groups, and field trips. General meetings are normally held the fourth Tuesday of every month at 7:45 PM at 100 Belwood Gateway (The Cabana Club), Los Gatos, CA 95032. Belwood Gateway is just south of Blossom Hill Road between Leigh Avenue and Harwood Road.

Our next general meeting will be on February 27, 2007 at the Cabana Club, 100 Belwood Gateway, Los Gatos, CA 95032 at 7:45 PM.

Our next board meeting will be on March 1, 2007 at Ruth Bailey's home, 2857 Addison Place, Santa Clara, CA 95051 at 7:30 PM.

Our Society's Purpose: The inculcation of a love of rocks and minerals by the furtherance of members' interests in the earth sciences and by education in all facets of related educational activities with the promotion of good fellowship, proper ethics, and conduct.

Our Membership Requirements: Attendance at two general meetings within twelve months. This society is a member of the California Federation of Mineralogical Societies (CFMS) and is affiliated with the American Federation of Mineralogical Societies (AFMS). Dues are \$10.00 per year.

Our Newsletter, the Breccia, is published ten times annually. The deadline for most articles is the Sunday before the regular meeting. The Breccia Editor is June Harris who may be contacted via email at juneconeyharris@yahoo.com or by phone at (831) 438-5150. The Breccia is proofread by Linda Spencer. Ruth Bailey and Bill Norton handle all aspects of mailing. Exchange Bulletins may be sent to June Harris at the following address: 107 Dell Way, Scotts Valley, CA 95066. Permission to copy is freely granted to American Federation of Mineralogical Societies (AFMS) affiliated clubs when proper credit is given.

Study Group Leaders

For information on a study group, please call the leader(s) listed below

Cutaways	John Eichhorn	(408) 749-0523
Facet Cutters	Max Casey	(408) 227-0526
Fossileers	Gail Matthews	(650) 962-9960
Future Rockhounds	Gail Matthews & Marsha Owen	(650) 962-9960 (408) 377-5373
Jewelry	Marc Mullaney	(408) 691-1584
Mineraleers	Chuck Boblenz	(408) 734-2473
Smithies	Kelly Van Vleck & Pat Speece	(408) 262-8187 (408) 266-4327
Stringers	Pat Speece	(408) 266-4327

Randy's Ramblings

Hello Fellow Rockhounds,

I would like to encourage each of you to take advantage of some of our upcoming activities. There is the field trip to the Benitoite Mine on Feb. 17, another trip to Clear Creek on March 24, a Potluck Dinner before the next regular meeting, and several other events which are listed in here in the Breccia. Come and say hello to our scholarship recipients at the next meeting.

And now, it's time to get up on my soapbox. I have several committee positions that are available, including some key positions. There are some people doing more than one job. This can lead to "burnout", which can be the death of a club. Remember, "Many hands make light work". Some of the committees that have a Chairperson need help, also. Please give me a call if you are willing to lend a hand. My phone number and E-mail address are listed here in the Breccia. If you have any ideas on how to improve the club, please write them down and send them to me. Also, let me know if there is anything you are interested in that we are not already doing. I will take it to the board and see how to make it happen.

Randy Harris, President

Potluck before the
February club meeting
Dinner to be served at 6:30
Meeting at 7:45
Bring your favorite main dish,
salad, or dessert to share.

**Come one, Come all!
Study Group Demo Day
February 10 from 10AM -3PM
at the Cabana Club.
Call Marc Mullaney for
more info (408) 971-6651
or email him at
geologistm@aol.com**

June Jabberings

Our club newsletter has a specific purpose. Its purpose is to fulfill several club needs. First, it is to provide a forum for all the club activities to have an equal platform to apprise our club membership of their upcoming activities. Second, it's to communicate with not only our membership, but also other clubs, federations, prospective members, and our community. Lastly, its existence is mandated by our Operating Regulation as a method of informing all club members of reports from all committees, study groups, field trips, club activities, regular meeting and board meeting minutes, and monthly treasurer's report.

I have been the editor of the Breccia for the last three years. My experience is that many of our committees and study groups don't provide a monthly update on their activities. There seems to be a myth that if our club activities are announced at a club meeting or if your study group is aware of what your group is doing, that's enough; not according to our Bylaws. This month, I had one report from a study group prior to the deadline. I really appreciate this group's timely report. They are regularly on time and provide a good report of their activities. I received one additional report before the regular meeting. We have a lot more groups meeting and committees functioning than that. In the past I have resorted to sending out reminders to everyone when the deadline is approaching. This makes my job that much more difficult and frustrating when many people disregard the deadline and expect that the deadline doesn't apply to them.

My suggestion is that when a study group meets, send your report immediately to me rather than putting it off. Everyone is busy, but it's easier to write a report when the meeting is fresh on your mind than several weeks later. This goes for other activities as well.

Our newsletter deadline is the Sunday before the regular meeting. The deadline for the March Breccia will be February 25. Please abide by the deadline. There are only a few jobs that can't follow the deadline. Club and board meeting minutes, Treasurer's report, member sharing, and the program review are the only jobs which can't abide by this deadline. They are allowed an extended deadline of the Board meeting to provide their written reports. Everyone else should have no trouble getting their reports to me in a timely fashion. There is no reason that the Breccia should not be in the mail by the week following our regular meeting. That's my goal every month. I'm going to stick to the deadline this year, and if you're late, don't expect that it's going to go into next month's Breccia. If it gets in, it will be a fluke. Let's start new next month and be on time. Thanks, June

Check out what our study groups are doing!!!

MINERALEERS BY CHUCK BOBLENZ



The Mineraleers met Tuesday, January 9th, with four members in attendance. The topic for the evening was Part 2 of Crystal Structure. Much discussion was held about the relationship between a cube and the other 30+ crystal shapes with cardboard examples being passed around. In addition, each attendee received a list of all the crystal groups with a listing of the various minerals that fit into each category and the specific crystal structure to be expected.

The meeting progression was very rapid and fast paced, and included gum-drop and stick models for review, as well. Matt Wood brought some excellent specimens that he shared with the group during the discussions.

The next meeting will be on February 6th, and the topic will be Crystal Twins and Pseudomorphs. Get your specimens out, dust them off, and plan to bring them to share with the group.

Hope to see you there.



Jewelers by Marc Mullaney

The first meeting of the Jewelers study group occurred on January 4th at 7:30 PM. This was an organizational meeting to determine the direction of the group. Twelve members were present. Decisions made were to have the meetings from 7-10 PM on the first Thursday of the month. We voted to name the study group "The Jewelers". Our topics of study will be based on the interest of the members. Jennifer Lee volunteered to lead our February topic which will be wire wrapping. A list of materials is available for anyone that wants to join us. Please contact me for a detailed list of supplies needed for the next meeting if you are interested in this study group, (408) 691-1584.

Each study group participant gave a ranked list of topics that interested them. Meetings will be based on the interests and the availability of someone to lead topics. The topics of interest are lost wax casting, silversmithing, gold soldering, findings, appraisals, and enamel, among others.

The next meeting will be on February 1 from 7-10 PM at the Cabana Club. There is a mandatory fee of \$2.00 per person to cover the rental of the building. The March meeting had to be moved to February 26 due to a conflict with the February board meeting.

Cutaways

No meeting this month. If you have an interest in learning more about this study group or know of a workshop where this group could hold meetings, please contact John Eichhorn, (408) 749-0523.

Fossileers By Gail Matthews



No report submitted.



Faceters

No meeting scheduled for February. If you have an interest in this group, please contact Max Casey, (408) 227-0526.

Stringers and Smithies by Pat Speece



If you are interested in either of these groups, please contact Pat Speece to be placed on the sign up sheet. You'll be contacted when a space or new sessions becomes available. Pat may be contacted at (408) 266-4327. Currently both groups meet on Tuesdays and Thursdays of alternating months.

STONE DAWGS FUTURE ROCKHOUNDS OF AMERICA PROGRAM



This is a new study group which is designed primarily for new rockhounds and kids. If you have questions call Gail Matthews (650) 962-9960 or Marsha Owen (408) 377-5373 for more details. Everyone is welcome.

Member Displays By Jim Ziegler

There were only two member displays at the January meeting. Pat Speece brought in a small display case with samples of the current Stringers study group's work. One guest, Geno Acevedo, brought in tumbled samples of Morgan Hill Poppy Jasper.

Next month, the following people are scheduled to bring something for member displays: Vito Cangemi, Maxie Casey, Don Cox, Lynda DeiRossi, John Eichhorn, Ron Erickson, Dennis Ewell, Claire Ferguson & Gordon Snyder, Ed and Eileen Ferner, Mary Lu Ferrara & Larry Knutson. We look forward to seeing what these people bring to share.

Next month's program is on Benitoite. If you have any Benitoite specimens you would like to share, please bring them and display on the Member Display table. These will support the program nicely.

Member survey results for program choices for 2007 regular meetings.

by Bill Gissler

Thirty-two members at the January 23 meeting voted on their preference for meeting programs in 2007. The top eight topics, in order of preference, were Opal, Benitoite, Jade, Meteorite Morrisonite Jasper, Idar-Oberstein, Rhodochrosite, and Ring of Fire. You have spoken; so now we are going to develop a meeting program and member displays in response to your requests. For the tentative program schedule, see the SCVGMS 2007 Calendar on page 6. Your participation in the programs and displays are important to making it a great year for the club.

January Program Reviewed

by June Harris

Bill Gissler presented a wonderful program on the Minerals in Medicine and the Curative Legends of Gemstones. This program was from the CFMS library and won the AFMS 1997 slide program competition. The program was prepared by Shirley Turski. The program first covered the extraordinary uses of minerals in medicine and then moved to the health-related legends behind particular gemstones. If you missed the program, you might like to rent it from the CFMS library. Contact Bill Gissler for more information. His contact information is in the front of the Breccia.

SUNSHINE BY ERNESTINE SMITH



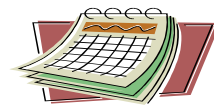
Herb Vogel has had successful cataract surgery. John Palmieri has had successful shoulder replacement surgery, and it was good to see him, without pain, at the meeting. Jennie Gibson is now in a residential care home. She had surgery for glaucoma in November and is still having trouble with her sight. Jennie would like to hear from her friends in the club - they can send mail to the address on Dunsburry Court, and it will be taken to her. Junior member, Jason Windsor, is going to have a medical procedure done on his hand with general anesthetic on February 8. Anna would like us to keep him in our thoughts and prayers. Bill Mercer has passed away. We appreciate all he did for our club, and we send our sympathies to his family. If you have information concerning any member who is ill, hospitalized, or has had a death in the family, please contact our sunshine person, Ernestine Smith, (408) 395-5035.

February Meeting Program will be on Benitoite.

In Memory of
BILL MERCER

Bill Mercer of Morgan Hill, California, died on December 9, 2006. Bill was a member of the Santa Clara Valley Gem and Mineral Society, and also the Salinas and the Carmel clubs. According to his wife, Bill's interest started as a young boy collecting rocks in the nearby creek. He would fill his dresser drawers until his father would dump everything back in the creek, only to have Bill cry and retrieve his treasures. As a young man, his friends ridiculed rock collecting until they saw him making money at his hobby. That's when they started seeking his advice about rocks they found while working on their ranches. Bill was one of the first people to bring Jade out of the Clear Creek area, and he helped with a book on California Jades. Later in life, Bill helped collect, market, and name Morgan Hill Poppy Jasper. His wife claims he has a mineral "Mercerite" named after him. Bill displayed many interesting cases at our club shows, along with bringing an assortment of rocks for the kid's areas. He couldn't watch television without making a comment about the rock formations in the background of the movie. His enthusiasm, smile, and good nature will be missed by all who knew him.

SCVGMS 2007 Calendar



February 1 Jewelers study group meeting at 7:30 PM at Cabana Club

February 10 Demonstration Day at the Cabana Club from 10-3. Need more info call Marc Mullaney at (408) 691-1584 or email him at geologistm@aol.com

February 17 Field trip to Benitoite Mine field trip. (rain date 2/24)

February 20 Show meeting at Ruth Bailey's home at 7:30 PM

February 26 Jewelers study group meeting at 7:30 PM at Cabana Club

February 27 Potluck at 6:30 PM, Regular Meeting at 7:45 PM, both at the Cabana Club. The program for the evening will be on Benitoite and the Benitoite Mine history.

March 1 Board Meeting at Ruth Bailey's home, 2857 Addison Place, Santa Clara, CA 95051, (408) 248-6195 hosted by John Eichhorn at 7:30 PM.

March 17 SCVGMS hosts the NBFT meeting at the Cabana Club

March 24 Clear Creek Field Trip (rain date 3/31)

March 27 Regular Meeting at Cabana Club at 7:45 PM. The program for the evening will be on Morrisonite Jasper.

March 29 Board Meeting at Randy Harris' home, 107 Dell Way, Scotts Valley, CA 95066, (831) 438-5150 at 7:30 PM

April 5 Jewelers study group meeting

April 12-13 Show Setup Days

April 14-15 SCVGMS Annual Show

April 24 Dessert social at 7:00 PM and Regular Meeting at the Cabana Club at 7:45 PM.

The program for the evening will be on Tourmaline and the Stewart Tourmaline Story. Colleen McGann will have an extensive display of tourmaline to share with us.

April 26 Board Meeting at Ruth Bailey's home, 2857 Addison Place, Santa Clara, CA 95051, (408) 248-6195 at 7:30 PM

May 3 Jewelers study group meeting

May 4-6 Snyder's Pow Wow

May 19 Demonstration Day at the Cabana Club

May 22 Regular Meeting at 7:45 PM at the Cabana Club. The evening's program will be on Opals and the Virgin Valley Mines.

May 24 Board Meeting at 7:30 PM Location to be determined.

June 7 Jewelers study group meeting

June 26 Potluck/BBQ before meeting at 6:30 PM, Regular Meeting at 7:45 PM with a Silent Auction throughout the meeting.

June 28 Board Meeting at 7:30 PM Location to be determined.

July 24 Regular Meeting at 7:45 PM at the Cabana Club. The evening's program will be on Idar Oberstein with displays by Bill Gissler and Linda Spencer.

July 26 Board Meeting at 7:30 PM at Dean Welder's home, 22682 Summit Road, Los Gatos, CA 95033, (408) 353-2675

August 11 Demonstration Day at the Cabana Club

August 28 BBQ/Potluck at 6:30 PM and Regular Meeting at 7:45 PM at the Cabana Club

August 30 Board Meeting at 7:30 PM Location to be determined.

September 25 Regular Meeting at 7:45 PM at the Cabana Club. Nominating committee elected.

September 27 Board Meeting at June Harris' home, 107 Dell Way, Scotts Valley, CA 95066, (831) 438-5150 at 7:30 PM

October 23 Potluck at 6:30 PM, Regular Meeting at 7:45 PM, both at the Cabana Club.

October 25 Board Meeting at 7:30 PM Location to be determined.

October 27 Demonstration Day at the Cabana Club

November 27 Regular Meeting at 7:45 PM Election of Board and Silent Auction throughout the meeting.

December 4 Installation Dinner at the Cabana Club.

January Show Report

Items of interest are:

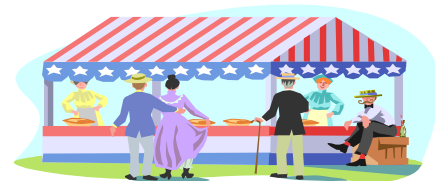
1. We are looking into changing our dealer signs to a cleaner and smaller sign. The reason for the change is that we are going with the lower dividers between dealers so we can open up the visibility of the building. The signs will have a finished back so they look good on both sides.
2. The first mock up of the show program is done.
3. The new addition this year will be the visibility program that I mentioned before. As a recap: each dealer, booth, or area at the show will have a stamp; if a guest gets 75% of the stamps, they get is a free gift while supplies last.
4. We will also have an extra drawing for anyone who turns in their center section of the program.
5. The radio advertising is almost done. We will be advertising on KBAY, KRTY, and KLIV. We have enough promised donations from dealers to cover the radio advertisements, lucky dip, and door prizes without having to spend any money on prizes. We did this by adding a questionnaire to the dealer contract questioning if they would like to donate a gift. In return for a donation, we will also put their names more prominently in show materials.
6. We will be adding a silent auction booth to the show. We need someone who would like to oversee the booth.
7. The layout is coming along nicely.
8. We appear to have plenty of dealers with quite a few on our waiting list.
9. Bill Gissler is working on scheduling guest speakers and programs for both Saturday and Sunday at the show.
10. Bill is also working on getting more display case entries. If you have a case or two that you would like to enter in the show, contact Bill Gissler for an entry form or download one from our club website, www.scvngms.org. Also, if you have a collection of rocks, minerals, fossils, or an educational display, Ruth Bailey will be holding a seminar at the next Demo Day, on February 10 at the Cabana Club, to help people develop a show case. Come by and learn how to display your collection.
11. John Eichhorn is currently working on signing up people to demonstrate lapidary arts throughout the show. If you have a special talent you would like to share, contact John (408) 749-0523.
12. If you have any yard signs from previous years, please contact Julaine Mullaney, (408) 266-1791, with the number of signs you have and the colors of each sign, so that new date stickers can be made and given to you.
13. Bill Gissler and Claire Ferguson have accepted the job of making all the show announcements.
14. The Kids Area is coming along nicely. We have made contacts at both the Girl Scout office and the Cub Scout office, and are distributing fliers to troops and packs. We already have quite a few troops and packs signed up to attend. We are looking for a ten-gallon aquarium for an experiment that we would like to display if anyone has one that they would like to donate.
15. We are moving the Touch and Feel table into the Kids Area.
16. I still need someone to run Decorations, Security, Silent Auction, and Hospitality.
17. At the February meeting, we will start getting signups for jobs at the show. This is our club's chief moneymaker for the year; please be generous with your time. We need the following number of volunteers in the following areas for each hour the show is open. The April 14-15 shifts are two hours long. Juniors are welcome to work with an adult.
 - a. Hospitality 4 people
 - b. Security 6 people
 - c. Lucky Dip 2 people
 - d. Scholarship Booth 2 people
 - e. Ticket Sales 1 person
 - f. Kids Area 1 person
 - g. Silent Auction 2 people

The next show meeting is at Ruth Bailey's on February 20th at 7:30 PM. Have a good month. Questions????

Marc Mullaney, Show Chairman (408) 691-1584

CFMS Show Schedule

Changes to this calendar are printed in italics. For the latest version of the CFMS Show Schedule go to www.cfmsinc.org



February 16 - 25, 2007, Indio, CA San Geronio Mineral & Gem Society Riverside County Fair & National Date Festival Gem & Mineral Building Bldg #1 46-350 Arabia Street Hours: 10 am - 10 pm Bert Grisham: (915) 849-1674

February 24 - 25, 2007, Antioch, CA Antioch Lapidary Club Contra Costa County Fairgrounds Flower Building at West 10th & L Sts. Hours: 10 - 5 both days Ellen Bauer (925) 458-2539 Email: ebaur_lapidary@yahoo.com Website: antiochlapidary.tripod.com

March 2-11 2007, Imperial, CA Imperial Valley Gem & Mineral Society "60th Annual Gem & Mineral Show" California Mid-Winter Fairgrounds Hours: Fri, Sat, Sun. Noon - 10 p.m. Mon. Thru Fri. 4 - 10 p.m. Paul Steward (760) 355-1888

March 2-4 2007, Hayward, CA Mineral & Gem Society of Castro Valley Centennial Hall 22292 Foothill Blvd. Hours: Fri. & Sat. 10 - 6; Sun. 10 - 5 Larry Ham (510) 887-9007 Email: info@mgscv.org

March 3-4 2007, Ventura, CA Ventura Gem & Mineral Society The Ventura Gem Show: Gems; Minerals, Lapidary Arts, & Fossils Seaside Park- Ventura County Fairgrounds, 10 W. Harbor Blvd. Hours: Sat. 10 - 5; Sun. 10 - 4 Ed Clark (805) 983-0028 Email: clarkoe@adelphia.net

March 3-4 2007, Arcadia, CA Monrovia Rockhounds Los Angeles County Arboretum & Botanical Garden 301 N. Baldwin Ave. Hours: 9 - 4:30 both days Jo Anna Ritchey Email: j.ritchey@verizon.net Website: www.moroks.com

March 10-11 2007, Escondido, CA Palomar Gem & Mineral Club, Army National Guard Armory 304 Park Avenue, Escondido, CA Hours: Saturday 10-5, Sunday 10-4 Matt Boeck (760) 216-8971 Email: mkboeck@hotmail.com Show Website: www.palomargem.org

March 10-11 2007, Spreckles, CA Salinas Valley R & Gem, Veteran's Memorial Hall, 5th and Llano Streets, Jim Bassett (831) 758-5830 Email: jbmsc@sbcglobal.net

March 10-11 2007, Turlock, CA Mother Lode Mineral Society Stanislaus County Fairgrounds Hours: 10 - 5 Bud & Terry McMillin (209) 524-3494 Email: terry.mcmillin@yahoo.com

March 10-11 2007, Vallejo, CA Vallejo Gem & Mineral Society, Solano County Fairgrounds, (junction Interstate 80 & Hwy 37) in the County Bldg. Hours: 10 - 5 both days Phyllis Malicki (707) 745-3255

March 16, 17, 18 2007, San Bernardino, CA Orange Belt Mineralogical Society, Western Regional League Ballpark, 6707 Little League Drive Hours: Fri, Sat. 9 a.m. to dusk; Sun. 9 - 4 Al Carrell (951) 961-5988; Emma Rose (951) 288-6182; Lyle (Pappy) (909) 887-3394

March 23, 24, & 25 2007, Bakersfield, CA San Joaquin Valley Lapidary Society 5th Annual Rock & Mineral Rendezvous Indoor Show/ Outdoor Tail Gate Kern County Fairgrounds Hours: Fri. 9 - 8; Sat. & Sun. 9 - 5 Lewis Helfrich (661) 872-8230 or 323-2663

March 24-25 2007, Angels Camp, CA Calaveras Gem & Mineral Society Jump for the Gold Gem & Jewelry Show, Hwy 49, Hours: Sat. 10 - 5, Sun. 10 - 4, Tom Reeves (209) 754-4863, Email: star@volcano.net

March 24 - 25 2007, Roseville, CA, Roseville Rock Rollers, Placer County Fairgrounds, 800 All America City Blvd. Hours: Sat. 10 - 5; Sun. 10 - 4, Jim Hutchings (530) 367-5108 Email: rockrollers@hotmail.com Website: www.rockrollers.com

March 31 - April 1 2007, Torrance, CA, South Bay Lapidary Mineral Society, Ken Miller Recreation Center, 3341 Torrance Blvd. Hours: Sat. 10 - 5; Sun. 10 - 4 Leslie Neff: (310) 318-2170 Email: lesneff@aol.com Website: www.palosverdes.com/sblap

April 14 - 15 2007, Mariposa, CA Mariposa Gem & Mineral Club, Mariposa County Fairgrounds, Hours: 10 - 5 both days Peggy Ronning (209) 742-7625 Email: mineralmuseum@sti.net

April 14-15, 2007, San Jose, CA Santa Clara Valley Gem and Mineral Society, Santa Clara County Fairgrounds, 344 Tully Rd. San Jose, CA 10-5 both days, Marc Mullaney (408) 691-1584 Club Website: www.scvgms.org Email: info@scvgms.org

April 28 - 29 2007, Santa Cruz, CA, Santa Cruz Mineral & Gem Society, Civic Auditorium at Corner of Center & Church Streets, Hours: 10 - 5 both days, Eleanor & Hubert Drake (831-8086) Email: hmdrake@pacbell.net

May 12-13 2006, Reno, NV, Reno Gem & Mineral Society, "Jackpot of Gems", Reno Livestock Events Center, Exhibit Hall 1350 N. Wells Ave. Hours: Sat. 10 - 5; Sun. 10 - 4 Call: (775) 356-8820 Website: renorockclub.com

June 2-3 2007, Glendora, CA Glendora Gems 859 E. Sierra Madre Hours: Sat. 10 - 5; Sun. 10 - 4 Bonnie Bidwell (626) 963-4638 Email: YBidwell2@aol.com

June 2-3 2007, La Habra, CA, North Orange County Gem & Mineral Society, La Habra Community Center, 101 W. La Habra Blvd. Hours: 9 - 5 both days Don Warthen

June 15-17 2007, Lancaster, CA Palmdale Gem & Mineral Club Antelope Valley Fairgrounds Hours: 9-5 Daily Email: pgmc@antelecom.net

October 13-14 2007, Grass Valley, CA, Nevada County Gem & Mineral Society, "Earth's Treasures", Nevada County Fairgrounds, 11228 McCourtney Road, Hours: 10 - 5 both days, Cliff Swenson (530) 272-3752

November 3-4 2007, Concord, CA, Contra Costa Mineral & Gem Society, Centre Concord - 5298 Clayton Rd. Clayton Fair Shopping Center, Hours: 10 - 5 both days Sam Woolsey (925) 837-3287

November 10-11 2007, Yuba City, CA Sutter Buttes Gem & Mineral Society, "Festival of Gems", Grace Franklin Hall, 442 Franklin Avenue, Hours: Sat. 9 - 5; Sun. 9 - 4 Cliff Swenson (530) 272-3752

2007 Federation Shows and Conventions

June 5-10, 2007, Roswell, New Mexico, RMFMS/ AFMS Show and Convention, Roswell, New Mexico, Gems of Enchantment, Hosted by Chaparral Rockhounds, Convention June 5-10, 2007, at the Best Western Sally Port Inn & Suites of Roswell, 2000 N. Main Street, Roswell, NM 88201, (505) 622-6430, fax (505) 623-7631 Show June 7-10, 2007, Roswell Convention and Civic Center, 912 North Main Street, Roswell, NM

June 15-17 2007, Lancaster, CA CFMS Show and Convention, hosted by Palmdale Gem & Mineral Club Antelope Valley Fairgrounds Hours: 9-5 Daily Email: pgmc@antelecom.net

August 3-5, 2007, Butte, Montana, NFMS Show and Convention, "Richest Hill on Earth" 67th Annual NFMS Show and convention, Butte Civic Center, 1340 Harrison Avenue, Butte, Montana 59701 Hosted by Butte Montana Mineral and Gem Club

August 11-12, 2007, Houghton, Michigan MFMS Show and Convention hosted by Midwest Mineral and Lapidary Society.

October 5-7, 2007, Wayne County Gem and Mineral Club 2007 EFMLS Convention on October 5, Show on October 6th from 10 - 5 and October 7th from 10 - 4 at St. Michael's School in Newark, New York. Any questions please contact Dave or Andrea Kords at (315) 986-1171

New Interagency Pass Program Will Help Enjoy Enhanced Recreation Sites on Public Lands.

Submitted by Frank Monez, SCVGMS

Office of the Secretary for Immediate Release, December 5, 2006, http://www.doi.gov/news/06_news_releases/061205.html

Washington— Deputy Secretary of the Interior Lynn Scarlett and Under Secretary of Agriculture Mark Rey today announced a new interagency recreation pass that will benefit visitors to national public lands. The new pass, authorized by the Congress in 2004, combines the benefits of existing recreation passes from five federal agencies into one comprehensive pass, the “America the Beautiful—National Parks and Federal Recreational Lands Pass.”

The new pass covers recreation opportunities on public lands managed by four Department of the Interior agencies—The National Park Service, Fish and Wildlife Service, Bureau of Land Management, and the Bureau of Reclamation, and by the Department of Agriculture’s U.S. Forest Service.

Access to most public lands remains free. The pass applies to those locations that currently have entrance or standard amenity fees. The new program replaces the Golden Eagle, Golden Age, and the Golden Access Passports, as well as the National Parks Pass. Existing passes will remain valid until expired, lost, or stolen.

Sales of the new pass will begin in January 2007 and will be at federal recreation sites that charge entrance and standard amenity fees, through government internet sites, and through select third-party vendors.

“Our federal lands boast scenic vistas, breathtaking landscapes, and unique historic and cultural sites. This new interagency pass offers a cost-effective and easy option for those who plan to visit multiple federal recreation sites,” said Deputy Secretary Scarlett. “The family vacation to these destinations is an American tradition. Visitors can now travel from a site managed by the Department of Interior to a site managed by the Department of Agriculture without getting a different pass. “A sight-seer in Utah, for instance, can view the majestic rock formation of Bryce and Zion National Parks and then explore Flaming Gorge National Recreational Area on the Ashley National Forest using only one pass.”

“The interagency pass is a great New Year’s gift both to the public lands and to their visitors,” said Mark Rey, Under Secretary of Agriculture for Natural Resources and the Environment, who oversees the Forest Service. “Annual interagency pass revenue derived from passes sold at federal recreation sites will directly benefit the selling agency, and no less than 80 percent of the revenue will remain at the site where the pass was sold.

The new pass program was created by the Federal Lands Recreation Enhancement Act, which Congress authorized in December 2004.

The four different passes in the new interagency program are:

- 1) a new annual interagency pass costing \$80— For visitors to multiple federal sites, the pass offers unlimited coverage of entrance and standard amenity recreation fees for a specific period of time, typically a year, beginning from the date of first use.
- 2) a \$10 lifetime senior pass for U.S. citizens 62 or over;
- 3) a free lifetime access pass for citizens with permanent disabilities; and
- 4) a new free annual volunteer pass for volunteers acquiring 500 hours of service on a cumulative basis.

The new interagency pass is good at vehicle-based entry sites for all occupants in a single, non-commercial vehicle. At walk-up sites, the pass is good for the pass holder and three adults (total of four adults). There is no charge for children under 16. This represents a particularly cost-effective opportunity for families traveling to federal recreation sites. For comparison purposes, Parks Canada offers a family/ group annual pass for about \$140.

Some specific examples of projects funded with fee revenues include: rehabilitating the Yellowstone National Park Canyon Visitor Center and creating new exhibits at Yellowstone National Park, enhancing boat launch facilities on the Tonto National Forest in Arizona, building an accessible boardwalk at Medicine Bow-Routt National Forest in Wyoming, and improving the museum at Desoto National Wildlife Refuge in Iowa.

The new passes—which feature award-winning landscape photographs of federal lands—are part of a new interagency “Share the Experience” Annual Federal Lands Photo Contest. The contest, sponsored by the National Park Service, the National Park Foundation, and Casio, encourages visitors to submit photos of federal lands for a chance to have their image chosen for the next year’s annual pass.

The passes will be durable, plasticized, and designed with technology that will enable future improvements to the program.

For more information, please contact DOI’s U.S. Geological Survey at <http://store.usgs.gov/pass> or phone 1-888-275-8747 option 1. The annual pass will be available for sale through the USGS store and through the government’s federal lands recreation web portal at www.recreation.gov in January 2007.

Donation Receiving Committee (DRC)

July to Date

By Pat Speece

This is fun stuff. November 11 was our last sale of 2006. At 25 cents per pound, we made \$193.04 even though it rained the night before and threatened to rain during the sale.

To date, we have brought in \$1838.35, money that would not be in club coffers otherwise. To date, we have spent \$578.07. This was for tables, folding legs, bins and bucket, a quart of outdoor polyurethane, and plastic sheeting and clamps to hold the sheeting down.

We've had many donations of non-rock items: the Bahrs lent their popup shade screen for a sale, the Yamashitas gave us similar protection for keeps, Kelly Van Vleck gave us a table and many rocks, members Gary Hagen and the Speeces also gave boxes of rocks, Randy Harris gave us appropriate table legs, and Daymond Speece and George Yamashita made two tables. I coated the two new wood tables with two coats each of outdoor polyurethane. I used the leftover urethane to give another coat to the six Smithie desks that John Eichhorn made for the Smithies earlier this year.

A Wee Bit of History of Sales and Donations

Our first sale was at the club picnic in July. We donated really good rocks/slabs to the raffle and we donated ordinary rocks to the bingo selection. The second sale was here (Speece home) in August, and the third sale was in September. We started a Secret Auction at the October general meeting and we plan to continuing them, though no timetable has been set. Starting last October, we have been awarding door prizes at each monthly meeting. We had our fourth rock sale here in November. At our November Silent Auction, we donated a lot of good stuff. This brought in \$195.50. We want to keep track of how much money we caused to come into the club.

A Wee Bit of Future Sales and Donations.

We have another new donation of an estimated 3700 pounds of rock. This donation will be offered for sale as soon as there is no inclement weather forecast for several Saturdays in a row.

In February, we will resume monthly door prizes and frequent Secret Auctions. Be on the lookout for these. Secret Auction items are from our very, very good pile of rocks and slabs.

At Marc Mullaney's request, we gave him a big specimen of Indian Blanket jasper for bookends and a big specimen of Brazilian agate to make into

spheres. The Indian Blanket bookends will go to the Lucky Dip at our Show 2007, and the agate as a radio advertising prize for our show.

In five months, we have had four sales, obtained appropriate tables and bins, instituted monthly door prizes, and held frequent Secret Auctions. We have also donated to every possible existing giveaway our club offers – picnic raffle and bingo, Silent Auctions, and Juniors. We've done this with a lot of fun and learning and good help. All this, and we were able to give the club \$1260.28 that wouldn't be there otherwise. The DRC is a really good, going concern!

California's State Gemstone

via the Rollin'Rock 12/03, via California Department of Conservation website <http://www.consrv.ca.gov/dmg/pubs/notes/11/>

On October 1, 1985, benitoite was designated as the official state gem by the California legislature. (Not to be confused with the state mineral, which is gold, or the state rock, which is serpentine-Editor). Benitoite, a barium titanium silicate, can occur in rich blue crystals that are as striking and flawless as the finest sapphires. Gem quality benitoite is found only in a small area of San Benito County, California. Benitoite has never been found in quantity or as crystals much larger than 5 cm across.

Benitoite was discovered in 1906 by J. M. Couch at the now well-known Benitoite Gem Mine locality in San Benito County. In 1907, George D. Louderback, a mineralogy professor at the University of California at Berkeley identified it as a new mineral species, and named it benitoite after the river, county, and nearby mountain range where it was found.

Benitoite crystals occur in a wide range of colors including heliotrope, pink, white, several shades of blue and colorless. A variety of colors and hues in a crystal is common. The large majority of crystals are translucent and have pale blue or white centers with deep blue outer rims. The violet-blue in some crystals is thought to be caused by titanium sesquioxide.

Mineralogists group all crystals into six systems based on the symmetry or lack of symmetry in the arrangement of crystal faces. The hexagonal system, to which benitoite belongs, theoretically has 12 classes. Although 10 of the 12 classes were known to occur in nature, two of them remained to be found. The investigators discovered that benitoite belongs to one of these missing classes. It is the only naturally occurring representative of the ditrigonal-dipyramidal class.

Benitoite fluoresces a bright deep sky blue under short wave ultraviolet light and x-rays. It is one of the most beautiful fluorescent minerals.

Safe– Be Well: Feet Hurt? Check Foot Wear and Foot Care!

Don Monroe, AFMS Safety Chair,
AFMS Newsletter February 2007

I remember some of my older relatives saying that when your feet hurt, you hurt all over. I never really gave it much thought until I approached significant maturity. Then, my feet began to cause a bit more trouble, and I had to make changes in footwear and foot care. I well remember the lectures they gave us in the Army before we went on marches, hikes, or field exercises. We always had to have an extra pair of clean, dry socks, and we had to inspect our feet carefully each morning and each evening and keep our boots and feet as dry as possible. It was darned good advice.

All of us must become more sensitive to our footwear. We should select sturdy shoes. I know, ladies, they may not be stylish. We must have shoes that fit properly. We may have gotten in the habit of buying one particular size, and they may no longer fit. Two factors can figure into this. First, I have been told that a few years ago, manufacturers changed the standards for shoe sizes, and shoes became ever so slightly smaller. A second factor is that, as we become older, our feet may tend to change size, width, or length. We may need to consult a knowledgeable supplier of footwear so that we purchase the correct size so that we do not cramp our toes, and also get the proper support. Much comfort can often be derived from either good quality arch supports or custom made orthotics. This may cost you a little money, but can be a good investment in the long run.

The second part of the basic equation of foot comfort is foot care. Let's start with the toenails. An ingrown toenail can really be a source of pain and infection – they can actually be dangerous. Nails should be trimmed straight across and trimmed often. They do not have to be cut short; just don't let them touch the inside of the toe of the shoe. Be alert to strange tendencies for the toenails to "cup" or "curl," and watch out for discolora-

tion. There are fungus growths that enjoy attacking your toenails, and they can cause big trouble.

Malformations of the toes and feet can occur and are bad news. Hammer toes, bunions, and corns often result from poorly fitted shoes and may require medical assistance. There are other foot problems that I do not even know about, and I am not sure that I want to.

Paying close attention to our toes and feet, in general, is most important. With age comes the onset of non-insulin dependent or type 2 diabetes. Diabetes has a nasty habit of causing sores or infections on the feet, and this must be avoided. Untreated sores on the feet can even result in amputation or some other form of surgery.

In closing, let me remind you that our feet are fragile, and we must not run down to our work area or studio for even a minute without proper footwear. It is really easy to break toes, and often very little can be done to repair the damage. Having your toes taped together is less than comfortable and is, often, the only thing that can be done to achieve healing.

I must declare to you that I am not a physician and have no other contact with the medical profession other than sleeping with a nurse (my wife), but I do know that as long as we persist in walking upright, we must take care of our feet.

Upcoming Field Trip Opportunities

Contact Dean Welder (408) 353-2675 for information about the below field trips. Dean will make the appropriate introductions for you to be able to attend.

February 17 Benitoite Mine Trip, Cost \$100.00

March 24 Clear Creek Field Trip for jadeite, plasma agate, jasper, petrified wood.

June 3-10, Virgin Valley and Black Rock Desert. For more information, call Jennifer House at (408) 243-7025.

Minerals and Their Uses—Fluorite

by Betty Jones from Shin Skinner News, October 2004;
via Gem Cutters News, December 2004.

It is not unusual for a rockhound, especially in the early days of collecting, to confuse mauve or purple fluorite with amethyst.

However, it is really quite simple to distinguish the one from the other. The color may be the same, but the crystal form is quite different, amethyst having the hexagonal shape and pyramid top of quartz, while fluorite crystals form a perfect cube or octahedron¹.

Besides this, amethyst has the hardness (7) of quartz while fluorite is only 4 on the Moh's scale. For this reason, it does not make very suitable jewelry material as it scratches so easily. However, it does carve well, and the Chinese are known for beautiful carvings in fluorite.

Fluorite has a vitreous (glassy) luster, perfect cleavage, and is brittle. Although the cubic (six square faces) is the most easily recognized habit of fluorite, it can be found in octahedrons, and rarely in the dodecahedron², or even a tetrahedron³, all modifications of the cubic habit. It is thought that these forms are likely to grow at higher temperatures.

As we all know, fluorite is a fairly common mineral and also quite widespread. It is found in hydrothermal veins with the metallic ores, in particular with lead and silver, but also in igneous rocks such as granites and pegmatites. The minerals associated with fluorite are barite, gypsum, celestite (celestine), and dolomite, and it can also be found on its own with no other minerals.

Fluorite is often to be found on mine dumps where it was thrown by the "old men" as gangue (waste), for they had no use for it. However, it became known for its crystal beauty, and miners would bring out the best crystal clusters for sale to collectors. Some of the best samples in old British collections were acquired this way.

Fluorite sometimes produces fine crystals in the cavities in the limestone rock, having been formed in solution.

Thrown out as waste by the old miners, why is it so much in demand today? In fact, in Cornwall, England, in the 1970's, I found that they were reclaiming the mine dumps for the fluorite to be found there. It was, of course, due to industrialization. Fluorite was found to be of great use as a flux in the steel and foundry industries and for refining of aluminum.

The best grades were used in enameling iron for baths (before fiberglass) and for producing opaque and opalescent glass. It is also used for producing hydrofluoric acid and raw material for the chemical industry. This acid is essential to the manufacture of synthetic cryolite which is used as an electrolyte⁴ in recovering aluminum metal which is made from the mineral bauxite.

It also produces fluorine for the fluorides used as refrigerants and for fluorocarbons resins used in pipe and tank linings. We all know the Teflon linings on cooking pots and pans which saves us a lot of cleaning and scraping; this is a product of fluorine.

However, the major amount of fluorite is used in steel-making and as a flux in open-hearth furnaces to produce a slag to clean the steel of phosphorus and sulfur.

Fluorite that is colorless is important in use for making special optical equipment. However, it is becoming very common for synthetic crystals to be grown for this purpose.

Fluorite is found in a variety of colors. When pure, it is transparent and without color, but this is rare. The crystals may be commonly green, amber, dark purple, or mauve, but also, more uncommonly, pink, blue, or brown.

The unusual variety, known as "Blue John," is found only at Castleton in the county of Derbyshire, England. There is a mountain there which consists mainly of fibrous, banded blue (purple) and white fluorite. The area was mined for lead by the Romans who used to carve it into vases and bowls, some of which have been found in Rome. To this day, Blue John is cut and polished into jewelry, ornaments, and decorative items. In fact, fluorite is found in more colors than any other mineral. It is interesting to note that heating and light tend to make the colors disappear, so we should keep our samples in darkness as the colors will fade. The variety of colors is caused by impurities and imperfections in the stone.

In the USA, Illinois, Tennessee, and Kentucky have produced beautiful crystals. Spain, France, Mexico, China, Russia, and the USA are some of the chief producers of fluorite, and good samples are often available.

1. Octahedron—a solid bounded by eight plane faces
2. Dodecahedron— a solid bounded by twelve plane faces
3. Tetrahedron— a solid bounded by twenty-four equal triangular faces.
4. Electrolyte—a nonmetallic electric conductor in which current is carried by the movement of ions

References:

Hurlburt, Cornelius S. Jr., Minerals and Man, Published by Thames and Hudson, London 1969.

Read, H.H., F.R.S. Rutley's Elements of Mineralogy, 26th ed. Published by Thomas Murby & Co., London

Mineral Nicknames:

Anonymous, from Pegmatite, 6/05; via Gem Cutters News, 12/05

"Spanish Topaz" Not topaz, not from Spain. It's really citrine, a variety of quartz.

"Cape Ruby" Nope, not a ruby at all. It's only a blood-red garnet, a lot less valuable.

"Bohemian Ruby" Not ruby, not from Bohemia. It is red tourmaline or rose quartz.

"Vesuvianite" or "Californite"- definitely not jade. It is actually green Idocrase.

"Oregon Jade"- Hmm. Another 'not Jade.' Really greenish grossular garnet.

"Evening Emerald" This gem-quality variety of olivine should be called peridot.

"Oriental Amethyst"- Just a purple sapphire, but MORE valuable than amethyst!

ROTARY FLAT LAPS VS. WHEELS FOR GRINDING, SHAPING AND POLISHING ROCKS.

By Val Carver

There are two basic types of machines available to shape, grind, sand and polish rocks. These are the vertical type wheel machines or the horizontal disc type of machines. Regardless of the type of grinding/sanding agent being used, that being silicon carbide or diamonds, the following discussion applies equally to both of them.

The basic configuration of a wheeled arbor is that of one or several grinding or sanding wheels lined up in a row sharing a common arbor shaft and driven by a common power source. Perhaps the most common name brand of this type of machine is the Diamond Pacific Genie. This type machine usually has several hard grind wheels for shaping the rock, one or several soft wheels for sanding and usually a vertical disc for polishing.

A rotary flat lap consists of a single interchangeable rotating horizontal disk. The disks have different-sized abrasives bonded to the top. The abrasives come in a variation of sizes from course to very ultra fine with the polishing being done on a disc charged with some type of polish compound. Currently the most popular of this type of machine is the Hi-Tech "All You Need" or the Ameritool "H.D. Universal." The shaping/sanding/polishing of the rock is done on the flat spinning disc surface with the disk being changed from abrasive grade to abrasive grade. With both types of machines you must constantly drip water onto the work surface.

The wheel machines are great for production work. Usually if you have a multi-wheel machine you can move from grinding to sanding to polishing without stopping to change wheels. Please note, it is very hard to polish a true flat on a wheeled machine. Also wheeled machines are strictly limited to the size of rock you can work on. Also note the wheels are usually very close together and more likely than not when operating a wheeled machine you will trim your finger. Last, wheeled machines are bigger, heavier and cost more than an equivalent rotary flat lap.

A small 6" diameter 2-wheeled silicon carbide machine can be had for about \$450.00, a 6"- 6 wheel all-diamond Genie about \$2,045.00 with an 8" - 6" wheeled all-diamond machine going in the range of \$2,100.00 up to \$3,200.00.

The rotary flat lap is great for single piece work. They allow for true flat work as well as shape or contour work (I cut cabs on mine all the time). Rotary flat laps allow for much larger work to be done on them than an equal diameter wheeled arbor type machine. Current rotary flat laps are much more compact and lighter than an equal sized wheel machine. A complete 8" diameter all-diamond rotary flat lap can be had for \$579.00.

I guess my recommendation is that if you want to do production work, get a wheeled machine. If you want to do ones or twos, or do true flat work, get a rotary flat lap.

via The Rocky Reader, Feb/Mar 2007; via The Rockfinder, January, 2007; via The Rock Rustler News.

Twinned Minerals

via Petrograph, 3/04

Twinned minerals can add a fascinating side to ordinary minerals or can add another dimension to already complex minerals. There are several minerals that form classic twins, such as chalcocite, fluorite, sanidine, microcline, staurolite, gypsum, cinnabar, spinel, and rutile to name a few. Some twins have colloquial names, such as 'fairy cross', iron cross' and cogwheel' twins. Twins form as a result of an error during crystallization. Instead of a normal single crystal, twins grow out of or into each other. Accidental relationships are not considered twins, that is, where two distinct crystals grow more or less randomly side-by-side or toward each other. Twin formation is never random and follows certain defined rules called twin laws, usually named for well known twins, Spinel law, Albite law, etc.

The twin laws are crystallographic in nature and are caused by flaws in the crystal structure occurring

during growth or change in phase. Many minerals form with a stacking sequence. If an error occurs during growth the twin forms as a miss-positioned sequence, which is repeated as if nothing happened. The crystal(s) grow outward in both directions. Twinning has dramatic effect on the outward symmetry of the mineral.

There are two general types of twin styles-contact and penetration. Contact twins have a composition plane that forms the boundary between them, a mirror plane where the twins look like reflected images or an angled plane resulting in a 'bend' to the twin forming dove-tails, fishtails and chevrons. Penetration twins look like whoever made the crystal didn't know how it was supposed to fit and ended up twin crosses, 3-D stars, and complex structures. Twinning is actually rather common in the mineral kingdom, but perfectly formed twins are not.

Ref: Excerpt <http://galleries.com> via GEM-N-I Newsletter 7/03

THE TRONA PINNACLES

AREA DESCRIPTION: However it may appear to you, a visit to the Trona Pinnacles will be a journey into one of the most unusual geologic wonders in the California Desert. This unique landscape consists of more than 500 tufa (calcium carbonate) pinnacles rising from the bed of the Searles Dry Lake basin. These tufa spires, some as high as 140 feet, were formed underwater 10,000 to 100,000 years ago when Searles Lake formed a link in an interconnected chain of Pleistocene lakes stretching from Mono Lake to Death Valley. The Trona Pinnacles were designated by the Department of the Interior as a National Natural Landmark in 1968 to protect one of the nation's best examples of tufa formation. The area is managed by the Bureau of Land Management to protect its scenic values and has become a popular filming location for movies and commercials.

GETTING THERE: The Trona Pinnacles are located approximately 20 miles east of Ridgecrest. Access to the site is from a BLM dirt road (RM143) that leaves SR 178, about 7.7 miles east of the intersection of SR 178 and the Trona-Red Mountain Road. The 5-mile long dirt road from SR 178 to the Pinnacles is usually accessible to 2-wheel drive vehicles; however, the road may be closed during the winter months after a heavy rain.

PLANNING YOUR VISIT: The Trona Pinnacles are located at around 2,000 feet above sea level in the Western Mojave Desert making it an ideal place to explore in the fall, winter, and spring months. Visiting the site in the early morning and evening is especially dramatic as are nights with a full moon. Summer temperatures often exceed 115°F at the Trona Pinnacles, so if you plan on visiting in the summer try the early morning or evening hours. Bring plenty of water (at least 2 gallons of water/person), and if you do not have 4-wheel drive, stay out of the sand washes. Quite a few cars have been stranded in the wide sand wash that divides the main Pinnacles group. A network of dirt roads winds throughout the site and provides numerous vantage points from which to view and photograph the Pinnacles. A .5-mile hiking trail leads into the heart of the Pinnacles for a close-up view of these spires and the surrounding desert environment. The hike is not difficult, but you should wear sturdy shoes. Primitive camping is permitted at Trona Pinnacles, and campers are encouraged to use existing campsites and fire rings and to pack out all trash. If you plan on having a campfire, bring your own firewood. Camping is limited to 14 days. The only development of any facilities is a vault type toilet. There are no other services at the Pinnacles. Operate your motor vehicle and mountain bike on existing routes to protect this fragile place. Cross country travel will destroy vegetation and create scars on the landscape that may take years to heal. Shooting is prohibited at the Trona Pinnacles to ensure the safety of other visitors. Remember to practice Leave No Trace principles: Plan Ahead and Prepare Camp and Travel on Durable Surfaces Pack It In Pack It Out Properly Dispose of What You Can't Pack Out Leave What You Find

Minimize Use and Impact of Fires

To view the on-line article, go to <http://www.blm.gov/ca/ridgecrest/trona.html>

Submitted by John Martin – Palmdale Gem and Mineral Club pgmc@antelecom.net PLAC South via CFMS October 2006

WHAT'S THE PURPOSE?

by Steve Weinberger, Central Office; via AFMS Newsletter, October 2006

Someone recently asked me "What's the purpose of the AFMS?" Good question, and one that caused me to do a little research so I could give the individual the "official" answer. My probe took me back to the AFMS Articles of Incorporation, which state....

"Article II - Objects and Purposes

Section 1. GENERAL PURPOSES: To promote popular interest and education in the various Earth Sciences, and in particular the subjects of Geology, Mineralogy, Paleontology, Lapidary and other related subjects, and to sponsor and provide means of coordinating the work and efforts of all persons and groups interested therein; to sponsor and encourage the formation and international development of Societies and Regional Federations and by and through such means to strive toward greater international good will and fellowship."

That statement was written almost sixty (60) years ago, and we're still holding true to it. The number of regional federation members has grown to seven and through their efforts as well as our own, we're educating the public through local clubs, shows, field trips, newsletters, websites, etc. We're also helping the field "grow" through our scholarship foundation with two dozen students receiving financial assistance each year.

I've had the statement added to the newsletter (page 3) and it will appear there from now on each month so you can refer to it easily. I've also asked Marty Hart, the AFMS webmaster, to place it on the website (www.amfed.org) so that visitors can learn more about why we're around.

**Santa Clara Valley Gem and Mineral Society
General Meeting Minutes
January 23, 2007**

President Randy Harris called the meeting to order at 7:45 PM at the Belwood Cabana Club in Los Gatos. Members and guests were welcomed. The board meeting will be at Bill Gissler's home, January 25.

CORRESPONDENCE: Flyer from EPA on Super Fund Sites at Clear Creek BLM area, Snyder Ranch Pow Wow newspaper and flyer, Tucson show flyer, and a San Jose State scholarship letter.

NEW MEMBERS: None

HOSPITALITY: There were 34 members and 4 guests in attendance tonight.

STUDY GROUPS: See details in the Breccia. Pat Speece showed examples of the Stringers work and discussed the future meetings of the group and the Smithies classes.

DEMO DAY: See details in the Breccia. February 10th, this will include a demonstration on how to set up a display case.

DONATION RECEIVING COMMITTEE: See details in the Breccia. A sale is planned for March, with some machines included.

LIBRARY: Pat Speece will be organizing the library case and reopening it next month.

PLAC: (Public Land Advisory Committee) Frank Monez talked about the difference between the Internet rumors and the BLM/ Government web sites regarding fees, permits, and passes. See details in the Breccia

FEDERATION: See details in the Breccia. Ruth Bailey talked about the show trophy categories and about an upcoming White Elephant/estate sale near Oakland. Contact her for more information.

SHOW: See details in the Breccia. **THERE ARE STILL POSITIONS TO FILL!** Next show meeting is Feb 20th at Ruth Bailey's house.

FIELD TRIPS: See details in the Breccia. Sign up sheets were out for Clear Creek and Benitoite mine trips. A short report by Randy Harris was given on the dinosaur exhibit trip to the California Academy of Science in San Francisco.

NBFT meeting March 17th.

MEMBERSHIP DIRECTORIES: Copies were passed out to members present. A copy can be obtained at future meetings.

MEMBER DISPLAYS: See details in the Breccia.

SUNSHINE: See details in the Breccia. Bill Mercer of Morgan Hill passed away in December. John Palmieri is recovering from shoulder replacement surgery. Herb Vogel had cataract removal surgery early this month; he is doing well.

PROGRAM: Bill Gissler gave a slide show and talk on Minerals in Medicine and the Curative Legends of Gemstones. Survey forms on future programs were passed out and collected. Bill will use the survey to develop a meeting program schedule for the rest of the year.

DON'T FORGET: Potluck Dinner at 6:30 PM before next month's meeting; bring a favorite dish!

Meeting was adjourned in memory of Bill Mercer at 9:12 PM.

Respectfully submitted,

John Eichhorn, Secretary

**Santa Clara Valley Gem and Mineral Society
Board Meeting Minutes
January 25, 2007**

President Randy Harris called the meeting to order at 7:30 PM at the home of Bill Gissler.

All board members were present except for Frank Mullaney, Gail Matthews, Rick Kennedy, Larry Moore, and Dean Welder. M/S/P to approve the minutes of the December 7, 2006 joint board meeting as read.

Correspondence: Two Dodge & Cox Fund letters, trailer storage bill, show display letter, Calif. Mining and Mineral Museum Assoc. letter, Stockton club newsletter, package for dealer chairman, IRS letter, Briarwood Elementary School letter, San Jose State University Department of Geology letter.

New Members: None

Treasurer's Report: M/S/P to pay bills. Audit committee report reviewed. M/S/P to approve audit report.

Field Trips : See details in Breccia, Benitoite mine, and Clear Creek trips.

Show Report: See details in Breccia. Discussion of radio ads. M/S/P to use KBAY advertisement.

M/S/P to use KRTY and KLIV with a maximum cost, of both station combined, to be no more than \$1600.00. Show

chairman is to investigate the demographics of each station further and inform the board at the next meeting.

Show meeting February 20th, 7:30 PM at Ruth Bailey's.

Demo Day: Saturday, February 10th. See details in Breccia.

Installation Dinner: December 4th, 2007 at the Cabana Club meeting hall.

Sunshine: See details in the Breccia. M/S/P to donate twenty-five dollars to the CFMS Endowment Fund in memory of Bill Mercer. Secretary to write a letter to CFMS.

Plac: See details in the Breccia.

New Business: M/S/P to renew club members in the Calif. State Mining and Mineral Museum membership.

Additional notes: June Harris will try to do the Briarwood Elementary School science day.

SJSU has a new Geology department head.

Programs: Bill Gissler presented his survey of club meeting programs and schedule for 2007.

M/S/P to adjourn at 10PM.

Bill Gissler served delicious refreshments that were enjoyed by all.

Respectfully submitted,

John Eichhorn

Santa Clara Valley Gem and Mineral Society
Treasurer's Report
January 17, 2007

Beginning Balance		\$17,981.21
Receipts		
Installation Banquet	\$ 402.50	
Dues	\$ 10.00	
Show Dealer's Fees	<u>\$3,084.50</u>	
Total Receipts	\$3,498.46	
Disbursements		
Installation Banquet	\$ 814.65	
April Potluck, November Mtg. Flyer	\$ 28.19	
Revolving Fund Merit Badge Program	\$ 26.00	
Postage for Dealer Packets	\$ 19.11	
Breccia Postage	\$ 31.50	
Field Trip to Academy of Sciences	\$ 119.50	
Breccia Printing	\$ 41.57	
2 Receipt Books and Sign in Book	<u>\$ 16.64</u>	
Total Disbursements	\$1,147.16	
Ending Balance		\$20,332.51