

Santa Clara Valley Gem and Mineral Society

Send Exchange Bulletins to:  
June Harris  
107 Dell Way  
Scotts Valley, CA 95066



Please Deliver Promptly

# BRECCIA

Santa Clara Valley  
Gem and Mineral Society



All American Club

Volume 55  
Number 1

San Jose, CA  
January, 2008

## SCVGMS ELECTED OFFICERS

President: Randy Harris  
(831) 438-5150  
Vice President: Rick Kennedy  
(408) 529-9690  
Secretary: John Eichhorn  
(408) 749-0523  
Treasurer: Frank Mullaney  
(408) 266-1791  
Editor: June Harris  
(831) 438-5150  
Federation Director: Ruth Bailey  
(408) 248-6195  
Alternate Fed. Director: Frank Monez  
(408) 578-7067  
Directors:  
Chris Cherry (408) 448-0635  
Marc Mullaney (408) 691-1584  
RK Owen (408) 377-5373  
Michael Paone (408) 340-3258  
Matt Wood (408) 744-9402  
Historian: Linda Spencer (408) 997-7319  
Parliamentarian: Dean Welder  
(408) 353-2675

## SCVGMS COMMITTEE HEADS

Donation Receiving Committee Chairman:  
George Yamashita  
Field Trip Committee Coordinator:  
Dean Welder  
Field Trip Committee: Randy Harris,  
John Eichhorn, & Marc Mullaney  
Financial Advisory Committee:  
Ruth Bailey & Chuck Boblenz  
Founder's Day Picnic Food:  
Nancy Reineking & Michael Paone  
Founder's Day Raffle: Claire Ferguson  
Founder's Day Bingo: John Eichhorn  
Hospitality: Chris Cherry  
Installation Dinner: Marc Mullaney  
Librarian: Marsha Owen  
Member Displays: Rick Kennedy  
PLAC: (Public Lands Advisory Committee)  
Frank Monez  
Program: OPEN  
Refreshments: Linda Spencer  
Secret Auction: Donation Receiving Comm.  
Sergeant-at-arms: Vito Cangemi & JT Fuller  
Show 2008: Marc Mullaney  
Show 2009: Frank Mullaney  
Silent Auction: John and Sylvia Palmieri  
Social: June Harris  
Sunshine: Ernestine Smith  
Trailer Custodian: Herb Vogel  
Trophies: Frank Mullaney  
Webmaster: RK Owen

# Santa Clara Valley Gem and Mineral Society

P.O. Box 54, San Jose, CA 95103-0054

Website: [www.scvgms.org](http://www.scvgms.org)

Email: [info@scvgms.org](mailto:info@scvgms.org)

Phone Number (408) 265-1422

## An Invitation

This society is pleased to invite guests to attend general meetings, study groups, and field trips. General meetings are normally held the fourth Tuesday of every month at 7:45 PM at 100 Belwood Gateway (The Cabana Club), Los Gatos, CA 95032. Belwood Gateway is just south of Blossom Hill Road between Leigh Avenue and Harwood Road.

***Our next general meeting will be on January 22, 2008 at the Cabana Club, 100 Belwood Gateway, Los Gatos, CA 95032 at 7:45 PM. Our next board meeting will be on January 24, 2008 hosted by John Eichhorn at Ruth Bailey's home, 2857 Addison Place, Santa Clara, CA 95051, at 7:30 PM.***

Our Society's Purpose: The inculcation of a love of rocks and minerals by the furtherance of members' interests in the earth sciences and by education in all facets of related educational activities with the promotion of good fellowship, proper ethics, and conduct.

Our Membership Requirements: Attendance at two general meetings within twelve months. This society is a member of the California Federation of Mineralogical Societies (CFMS) and is affiliated with the American Federation of Mineralogical Societies (AFMS). Dues are \$10.00 per year.

Our Newsletter, the Breccia, is published ten times annually. The deadline for most articles is the Sunday before the regular meeting. The Breccia Editor is June Harris who may be contacted by email at [juneconeyharris@yahoo.com](mailto:juneconeyharris@yahoo.com) or by phone at (831) 438-5150. The Breccia is proofread by Linda Spencer. Ruth Bailey handles all aspects of mailing. Exchange bulletins may be sent to June Harris at the following address: 107 Dell Way, Scotts Valley, CA 95066. Permission to copy is freely granted to American Federation of Mineralogical Societies (AFMS) affiliated clubs when proper credit is given.

## Study Group Leaders

For information on a study group, please call the leader(s) listed below

Cutaways & Carvers	Frank Mullaney	(408) 266-1791
Facet Cutters	Max Casey	(408) 227-0526
Fossileers	Gail Matthews	(650) 962-9960
Jewelers	Marc Mullaney	(408) 691-1584
Mineraleers	Chuck Boblenz	(408) 734-2473
Smithies	Kelly Van Vleck & Pat Speece	(408) 262-8187
	Pat Speece	(408) 266-4327
Stringers	Pat Speece	(408) 266-4327

# Randy's Ramblings

Hello Fellow Rockhounds,

Let me take this opportunity to thank you for re-electing me to lead the club for the next year and thanks to everyone who helped with the many things we did this year. We have several exciting things to look forward to such as field trips, the show, study groups, meeting new friends, and, most importantly, a chance to serve the club in many ways. I have already spoken with many of you and I thank you for the positive responses I have received. Many of the committees have someone new to lead them. If you have not volunteered for a committee position, please consider helping the club by accepting a position. I am still looking for someone to do Programs. Co-Chairmen are always welcome. Bill Gissler has volunteered to help with the programs but cannot do the job alone. Please give me a call if you are willing to help. My phone number is listed here in the Breccia. If you have any ideas on how to improve the club, please write them down and give them to me or send me an email.

The Installation Dinner was well attended, and I think everyone enjoyed the evening. There were several bags of toys donated to the Marines for Toys For Tots. The food was very good. It was nice to see all of you!  
Merry Christmas and a prosperous New Year to you all.

Randy

## June's Jabberings

For the following positions and committees: field trips, DRC, all study groups, show news, silent auction, social, Founder's Day Picnic, librarian, hospitality, installation dinner, historian, and PLAC, the deadline for submission of reports or meeting minutes for the Breccia is the Sunday prior to the monthly general meeting. The following positions, all society officers' reports, member displays, program reports, and sunshine, will have a deadline of the Friday following the monthly board meeting. Email submissions are preferred, but written submissions are accepted. While late submissions may be placed in the Breccia when space is available and time permits, please expect to not have them added. I may send a reminder email regarding the deadline, but please don't come to expect it. It is not my job to make sure that everyone submits their reports. It is my job to include reports that are submitted to me in a timely fashion and are related to our organization.

The SCVGMS Board of Directors has authorized some new additions to our society's newsletter. Starting with our February edition, we will be offering commercial advertising to rock-hobby related businesses. The Board has limited the ad size to 1/8 to 1/4 page at \$5.00 and \$10.00 per ad, per edition respectively, sold in 5- and 10-issue increments.

Additionally, the Board has also passed a motion to allow noncommercial advertisements in the Breccia with the following conditions. Each household will be allowed a maximum of one advertisement quarterly, not to be repeated, with a limit of 40 words per ad. The ads will be placed in the Breccia on a space available basis on a first come, first served basis and must be rock-hobby related.

The newsletter editor has complete creative and administrative control of all advertisements. The deadline for commercial and noncommercial advertisements will be the 15th of each month. All submissions must either be emailed or mailed to the Editor (information on page 2 of Breccia). Please make sure the ad is written legibly, preferably typed or computer-generated, and is within the above guidelines.

The board felt that the addition of the ads would help fill a void left by the closing of Gems Galore. Many members are unaware that our club has members who have rock-related businesses. It is the Board's hope that the advertisements will help members locate the products and supplies that they need locally.

Wishing everyone happy holidays, June

# Check out what our study groups are doing!!!

## Mineraleers by Chuck Boblenz



The Mineraleers met on Tuesday, the Nov. 13th, and saw a video about working OPAL. There were 13 attendees who enjoyed the video. Following the video was a discussion about what constitutes OPAL. Many outstanding specimens the attendees brought were passed around for all to enjoy. Following the meeting delightful refreshments were provided by Winnie Moore.

It was decided that the December meeting will be postponed until after the holiday season.. The next meeting is scheduled for the January 8th. The topic will be Tourmaline. Watch your Breccia for further information.

Each of the Mineraleers wishes each of you a very happy holiday season and hopes that your coming year is prosperous.



## Cutaways and Carvers

The Cutaways and Carvers study group will be meeting at John Eichhorn's home on Thursday, January 10th at 7:00 PM. Call John at (408) 749-0523 for more information about address and project suggestions and ideas.

## Stringers by Pat Speece No report submitted



## Smithies by Kelly Van Vleck

No report submitted

## Fossileers by Gail Matthews No report submitted



## Jewelers by Marc Mullaney

The Jewelers study group will meet on January 3 for their next meeting. They will be working on soldering skills, easy to more difficult, for the first two months. For more information, contact Marc at [geologistm@aol.com](mailto:geologistm@aol.com) or (408) 691-1584. The meeting will be from 7 pm to 10 pm at the Cabana Club, 100 Belwood Gateway, Los Gatos.

## Faceters

The Faceters study group will be meeting on January 5 at the home of Max Casey, 9 AM - noon. The group is for anyone who would like to learn the art of faceting a gemstone.

Novices are welcomed and encouraged. Contact Max Casey at (408) 227-0526 for more information and directions.



## PLAC Report by Frank Monez

The BLM Hollister Field Office will be ready to issue vehicle passes soon. Passes will be required January 1 through December 31, 2008. The Fee Passes will be issued for 1 day (\$5), 7 days (\$10), and annual passes (\$60).

A sign will be seen at the self-pay station at the entrance to Clear Creek where you can obtain and pay for your weekly primary vehicle fee and/or OHV fee(s). The sign contains instructions for display and use of the Fee Passes.

Be on the lookout as you enter Clear Creek for new signs regarding collection of fees. Road widening and site preparation for the new entrance station building will begin in November with the station up and running mid-to-late January. Expect delays for incoming traffic Monday through Thursday on Clear Creek Road during the construction phase of this project.

## DRC report by Jane Yamashita

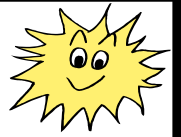
You haven't heard from the DRC lately because it's been sort of a dry spell. No news or information had come in for quite some time regarding donations. Nothing from the web site and nothing via the "club" phone number. It seems the general club members are our best resource for information about donations. The DRC is happy to report that we picked up a donation this past weekend from the Oyler residence in Morgan Hill. I shouldn't say "we" because George and I were busy with an Art & Crafts show that we had signed up for, for the weekend. Many of the DRC members were busy with previously made plans and couldn't go. It is a busy time of year. We had some loyal DRC members go and pick up the donation on Saturday. Thanks goes to Pat and Daymond Speece, John Eichhorn, John Bahr, and Gail Matthews. They picked up three large truck loads of rocks and minerals, a huge supply of lapidary magazines and booklets, a mineral cabinet with about 40 drawers, and a large box of topographical maps. While they were there, they perused the garage sale that was going on at the same time and got some great bargains for themselves. Thanks again to the three DRC members and the two volunteers, we now have some new material that will show up at our meetings, club show, and at our rock sales to be enjoyed by all of our club members and the community.

## January Meeting Program

### Opals

What are they?  
Where do you find them?  
How to cut them?

## Sunshine by Ernestine Smith



We are sad to announce the recent death of member, Peggy Loranger, mother of Anna Windsor. Our sympathies are with Anna, her husband, David, and their family.

June Harris had knee surgery on November 15th and is healing well.

If you have information concerning any member who is ill, hospitalized, or has had a death in the family, please contact our sunshine person, Ernestine Smith, (408) 395-5035.

## How do Opals Show Rainbow Colors?

Opal is one of the few gemstones that is not a crystal. Although it's made of silica (silica dioxide), the same compound as quartz and agate, the molecules are not arranged in crystalline order.

Opal is made of millions of extremely tiny spheres of silica molecules, loosely packed together with water molecules between them. The water content can be as high as 10% or more.

The colors come from the interaction between light and the silica spheres. If the spheres are almost the same size, they tend to pack into semi-regular patterns that diffract light the same way a peacock's feathers do. Each opal shows its own unique color display.

Author unknown, source The Petrified Digest, Ginkgo Mineral Society Wenatchee WA, August 2003; Quarry Quips, December 2003

## Meet Our New Members

Approved at the November 2007 Board Meeting

Sonia Dyer, (408) 629-5735, 1315 Mardene Ct. San Jose, CA 95121, [sonia.dyer@sbcglobal.net](mailto:sonia.dyer@sbcglobal.net). Sonia is interested in fossils, faceting, and minerals.

Stephanie Haughton, (408) 353-9497, 24318 Mountain Charlie Rd., Los Gatos, CA 95033, [haughton-handmade@gmail.com](mailto:haughton-handmade@gmail.com). Stephanie is interested in collecting, silversmithing, fossils, stringing beads, geology, minerals, and field trips.

# SCVGMS 2007 Calendar



**January 3** Jewelers meeting at the Cabana Club from 7-10 PM.

**January 8** Mineraleers meeting at Chuck Boblenz' home at 7:30 PM.

**January 22** *General meeting at the Cabana Club at 7:45 PM.*

**January 24** Board Meeting at Ruth Bailey's home at 7:30 PM.

**February 7** Jewelers meeting at the Cabana Club from 7-10 PM.

**February 23** Demonstration Day at the Cabana Club from 9:30 AM-3:30 PM. All study groups are requested to demonstrate.

**February 26** *Potluck and General meeting at the Cabana Club. Potluck 6:30 PM, Meeting 7:45 PM Club will provide drinks and paper goods, members provide main dish, salad, side dish, or dessert to share, at least 10 servings, please.*

**February 28** Board meeting at RK Owen's home at 7:30 PM.

**March 6** Jewelers meeting at the Cabana Club from 7-10 PM.

**March 25** *General meeting at the Cabana Club at 7:45 PM.*

**March 27** Board meeting at June Harris' home at 7:30 PM.

**April 2-3** **Show setup at the Santa Clara County Fairgrounds. Everyone is requested to help.**

**April 4-6** **Annual Show at the Santa Clara County Fairgrounds. Friday 9-5, Saturday & Sunday 10-5 Cleanup on Sunday evening until we are done. Everyone is requested to help.**

**April 22** *General meeting and Dessert social at the Cabana Club from 7:00 PM. Club will provide drinks and paper goods. Everyone brings dessert to share.*

**April 24** Board meeting at 7:30 PM Location TBD.

**May 1** Jewelers meeting at the Cabana Club from 7-10 PM.

**May 17** Demonstration Day at the Cabana Club from 9:30 AM -3:30 PM. All study groups are requested to demonstrate.

**May 27** *General meeting at the Cabana Club at 7:45 PM.*

**May 29** Board meeting at Chris Cherry's home at 7:30 PM.

**June 5** Jewelers meeting at the Cabana Club from 7-10 PM.

**June 24** *Barbeque/Potluck, General meeting and silent auction at the Cabana Club. Barbeque/potluck starts at 6:30 PM. Club will provide drinks, burgers, hotdogs, buns, condiments, and paper goods, members need to bring a salad or dessert to share, at least 10 servings, please. Meeting starts at 7:45 PM. Silent auction throughout the evening.*

**June 26** Board meeting at Matt Wood's home at 7:30 PM.

**July 10** Jewelers meeting at the Cabana Club from 7-10 PM.

**July 22** *General meeting at the Cabana Club at 7:45 PM.*

**July 24** Board meeting at Frank Mullaney's home at 7:30 PM.

**July 26** Founders Day Picnic at the Cabana Club.

**August 7** Jewelers meeting at the Cabana Club from 7-10 PM.

**August 9** Demonstration Day at the Cabana Club from 9:30AM-3:30 PM. All study groups are requested to demonstrate.

**August 26** *Barbeque/Potluck and General meeting at the Cabana Club. Barbeque/potluck starts at 6:30 PM. Club will provide drinks, burgers, hotdogs, buns, condiments, and paper goods, members need to bring a salad or dessert to share, at least 10 servings, please. Meeting starts at 7:45 PM.*

**August 28** Board meeting at 7:30 PM Location TBD.

**September 4** Jewelers meeting at the Cabana Club from 7-10 PM.

**September 23** *General meeting at the Cabana Club at 7:45 PM.*

**September 25** Board meeting at 7:30 PM location TBD

**October 2** Jewelers meeting at the Cabana Club from 7-10 PM.

**October 25** Demonstration Day at the Cabana Club from 9:30 AM-3:30 PM. All study groups are requested to demonstrate.

**October 28** *Potluck and General meeting at the Cabana Club. Potluck 6:30 PM, Meeting 7:45 PM Club will provide drinks and paper goods, members provide main dish, salad, side dish, or dessert to share, at least 10 servings, please.*

**October 30** Board meeting at Randy Harris' home at 7:30 PM.

**November 6** Jewelers meeting at the Cabana Club from 7-10 PM.

**November 25** *General meeting at the Cabana Club at 7:45 PM. Elections and silent auction throughout the evening. Board meeting immediately following the meeting.*

**December 2** Installation Dinner at the Cabana Club at 7:00 PM. Please bring an unwrapped toy to donate to Toys for Tots.

**December 4** Board meeting at 7:30 PM Location TBD.

## Old Miner's Rule

via The Rockcollector, 12/2005; The Geode Strata Data, 9/2005

While a miner's tools, equipment, and personal belongings remain in or next to a digging, that is his until he relinquishes it either by removing said property or announcing that he is finished digging in that area. Furthermore, specimen rocks cached on or near said personal property are also the property of the miner and shall not be touched or removed without his express permission. Every rockhound should obey this rule.

# Show and Tell Member's Displays Schedule for Meetings this Year

All members are asked to display at least one time per year. This list is alphabetical, and members who live far away are not included; they may display at any time. If you cannot display in your designated month, that's OK; just display when you can. You can display as many times as you like. There are no displays in June and November because of the Silent Auctions. There are no displays in December because there is the installation dinner in lieu of our regular meeting. The displays are a much-enjoyed feature of our monthly meetings.

Don't know what to display? Any type of rock (identified or not), your latest project, information on a field trip to take, ideas for a display case, anything to do with rocks!!!

## January

Geno Acevedo  
Walter Andrus  
Michael Avilucea  
John and Suzi Bahr  
Ruth Bailey and Montella Lopez  
Sam Baxter  
Mike Blakely  
Chuck and Jeri Boblenz  
Hershall and Nancy Boring  
Michael Bowker

## February

Donald Butler  
Vito Cangemi  
Maxie Casey  
Chris Cherry  
Adrienne Comanda  
Don Cox  
Betty Dean  
Lynda DeiRossi  
Sonia Dyer  
John Eichhorn

## March

Ron Erickson  
Dennis Ewell  
Claire Ferguson & Gordon Snyder  
Ed and Eileen Ferner  
Mary Lu Ferrara & Larry Knutson  
JT Fuller  
Misako Fuller  
Dan Gehret  
Jennie Gibson  
Bill Gissler  
Gareth Hagen  
Randy and June Harris  
Stephanie Haughton

## April

Ramona Heimlich  
Jennifer Olsen House  
Dick and Kit Hultquist  
Colleen Jackson  
Rick Kennedy  
Hans and Rose Kirsch  
Nancy Kortright  
Tim LaFlame  
Jennifer Le & Jim Ziegler  
Clif Loog  
Gail Matthews

## May

Alice McCammon  
Gary and Kathy McChristian  
Frank Monez  
Pam and Wil Montagne  
Larry and Winnie Moore  
Gerry Moseley  
Frank and Julaine Mullaney  
Kevin Mullaney  
Marc and Ann Marie Mullaney  
Jim and Diana Nelson  
Bill and Margaret Norton

## July

Paul Nowicki  
The Owen Family  
Denise and Travis Osterback  
John and Sylvia Palmieri  
Michael Paone and Nancy Reineking  
Kathryn and Robert Payne  
Howard Perry  
Mike Perry  
Ted and Kathi Peverini  
Dennis and Patricia Phelps  
Georgiana Rudge

## August

Jesus and Anne Ruiz  
Rich and Niki Santone  
Frank and Grace Santos  
Anthony Scott  
Doris Smith  
Ernestine Smith  
Patricia Speece  
Charles and Linda Spencer  
John and Eva Surrell  
Matt Surrell

## September

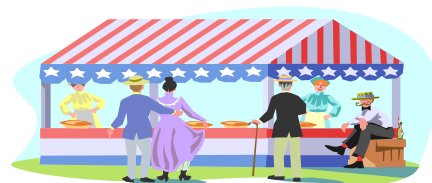
Lynn Toschi  
Johan Van Ommeren  
Kelly Van Vleck  
Herb and Roselies Vogel  
Sieg and Rosmarie Vogel  
June Warne  
Debbie and Mark Wartenberg  
Dean and Karen Welder  
Cindy Wilkie  
The Windsor Family  
Matt Wood

## October

Adam and Malia Yamashita  
George and Jane Yamashita  
Zachary Yamashita  
John Zerbini  
New Members

# CFMS Show Schedule

Changes to this calendar are printed in italics. For the latest version of the CFMS Show Schedule go to [www.cfmsinc.org](http://www.cfmsinc.org)



**January 19-20 2008, Exeter, CA**, Tule Gem & Mineral Society Gemboree, Veteran's Memorial Bldg., On Highway 65, Hours: Sat. 10 - 5, Sun. 10-4, Marshall Havner (559) 562-4133, Email: [mdhavner@verizon.net](mailto:mdhavner@verizon.net)

**February , 2008, Indio, CA**, San Gorgonio Mineral & Gem Society, Riverside County Fair & National Date Festival, Gem amp;& Mineral Building Bldg #1, 46-350 Arabia Street, Hours: 10 am - 10 pm, Bert Grisham: (915) 849-1674, Email: [bert67@verizon.net](mailto:bert67@verizon.net)

**March 1-2 2008, Arcadia, CA**, Monrovia Rockhounds, Los Angeles County Arboretum & Botanical Garden, 301 N. Baldwin Ave., Hours: 9 - 4:30 both days, Jo Anna Ritchey, Email: [j.ritchey@verizon.net](mailto:j.ritchey@verizon.net), Website: [www.moroks.com](http://www.moroks.com)

**March 1-2 2008, Ventura, CA**, Ventura Gem & Mineral Society, Seaside Park - Ventura County Fairgrounds, 10 W. Harbor Blvd., Hours: Sat. 10-5, Sun. 10-4, Abe-Bar-Shai (818) 991-7735, Email: [Barshai3@aol.com](mailto:Barshai3@aol.com) , Website: [www.vgms.org](http://www.vgms.org)

**March 1-2 2008, Escondido, CA**, Palomar Gem & Mineral Club, Army National Guard Armory, 304 Park Avenue ,Escondido, CA, Hours: Saturday 9-5, Sunday 9-4, Michelle & Van Lynch (760) 949-4164, Email: [michelleandvan@hotmail.com](mailto:michelleandvan@hotmail.com), Show Website: [www.palomargem.org](http://www.palomargem.org)

**March 8-9 2008, San Marino, CA**, Pasadena Lapidary Society, San Marino Masonic Center, 3130 Hunting Drive, Hours: Saturday 10-6, Sunday 10-5, Drew Wilson (626) 449-4910, Email: [TODREW@sbcglobal.net](mailto:TODREW@sbcglobal.net)

**March 8-9 2008, Spreckles, CA**, Salinas Valley Rock & Gem Club, Veteran's Memorial Hall, 5th and Llano Streets, Betty Alexander (831) 758-6205, Email: [bettalex@earthlink.net](mailto:bettalex@earthlink.net)

**March 8-9 2008, Turlock, CA**, Mother Lode Mineral Society, Stanislaus County Fairgrounds, Hours: Sat. 10 -6 , Sun 10-5, Bud & Terry McMillin (209) 524-3494, Email: [terry.mcmillin@yahoo.com](mailto:terry.mcmillin@yahoo.com), Website: [www.motherlodemineralsociety.com](http://www.motherlodemineralsociety.com)

**March 15-16 2008, Vallejo, CA**, Vallejo Gem & Mineral Society, Solano County Fairgrounds, (junction Interstate 80 & Hwy 37) in the County Bldg., Hours: 10 - 5 both days, Ed Austin (707) 373-5639, Email: [edhen@ips.net](mailto:edhen@ips.net)

**March 22-23 2008, Angles Camp, CA**, Calaveras Gem & Mineral Society, Calaveras "Frogtown" Fairgrounds, Hwy 49, Hours: Sat. 10 - 5, Sun. 10 - 4, Tom Reeves (209) 754-4863, \$3.00 per adult, children free

**March 22-23 2008, Roseville, CA**, Roseville Rock Rollers, Roseville (Placer) County Fairgrounds, 800 All America City Blvd., Hours: Sat. 10 - 5; Sun. 10 - 4, Jim Hutchings (530) 367-5108, Email: [rockrollers@hotmail.com](mailto:rockrollers@hotmail.com) Website: [www.rockrollers.com](http://www.rockrollers.com)

April 4, 5, & 6 2008, San Jose, CA, Santa Clara Valley Gem & Mineral Society, Santa Clara County Fairgrounds, 334 Tully Road, Hours: Fri. 9-5, Sat. & Sun. 10 - 5 both days, Email: [info@scvgms.org](mailto:info@scvgms.org),

Website: [www.scvgms.org](http://www.scvgms.org)

**April 4, 5, & 6 2008, Bakersfield, CA**, San Joaquin Valley Lapidary Society, 6th Annual Rock & Gem Rendezvous, Indoor Show/Outdoor Tail Gate, Kern County Fairgrounds, 1142 South P Street, Hours: Fri. 9 - 8; Sat. & Sun. 9 - 5, Lewis Helfrich (661) 872-8230 or 323-2663, Email: [lewsrocks@bak.rr.com](mailto:lewsrocks@bak.rr.com)

**April 12-13 2008, Mariposa, CA**, Mariposa Gem & Mineral Club, Mariposa County Fairgrounds, Hours: 10 - 5 both days, Peggy Ronning (209) 742-7625, Email: [mineralmuseum@sti.net](mailto:mineralmuseum@sti.net)

**May 3-4 2008, Bakersfield, CA**, Kern County Mineral Society, Ming Ave and P Street, Kern County Fairgrounds, Hours: 10-5 both days, Ismael Sanchez (661) 301-4609,

**May 10-11 2008, Reno, NV**, Reno Gem & Mineral Society, Reno Livestock Events Center, 1350 N. Wells Ave., Hours: Sat. 10 - 5; Sun. 10 - 4, John Peterson (775) 356-8820, Website: [www.renorockclub.com](http://www.renorockclub.com)

**May 31 - June 1 2008, Glendora, CA**, Glendora Gems, 859 E. Sierra Madre, Hours: Sat. 10 - 5; Sun. 10 - 4, Bonnie Bidwell (626) 963-4638, Email: [YBidwell2@aol.com](mailto:YBidwell2@aol.com)

**June 7-8 2008, La Habra, CA**, North Orange County Gem & Mineral Society, La Habra Community Center, 101 W. La Habra Blvd., Hours: 9 - 5 both days, Don Warthen (626) 330-8974, Email: [warthen@earthlink.net](mailto:warthen@earthlink.net) Website: [nocgms.com](http://nocgms.com)

**June 27, 28, 29 2008, Ventura, CA**, California Federation of Mineralogical Societies, Ventura County Fairgrounds, Hours: 10-5 Daily, Bural LaRue (909) 874-5664, Email: [bplarue@earthlink.net](mailto:bplarue@earthlink.net)

**October 18-19 2008, Santa Rosa, CA**, Santa Rosa Mineral & Gem Society, Veterans' Memorial Auditorium, 1351 Maple Avenue, Santa Rosa, Hours: Sat. 10-6, Sun. 10-5, Tom Dering (707) 564-4537, Email: [farmarch@sonic.net](mailto:farmarch@sonic.net), Website: [www.gem-n-i.org](http://www.gem-n-i.org)

**October 18-19 2008, Whittier, CA**, Whittier Gem & Mineral Society, Whittier Community Center, 7630 Washington Avenue, Hours: Sat. 10-5 both days, Jay Valle: (626) 934-9764, Email: [res19pnb@verizon.net](mailto:res19pnb@verizon.net)

## Upcoming Field Trip Opportunities

Contact Dean Welder (408) 353-2675 for information about the following field trips. Dean will make the appropriate introductions for you to be able to attend.

January 11-15, 2008 Burro Creek (Wickieup, AZ) for purple agate, jasper, opalite, apache tears, and more.

January 19, 2008 Santa Barbara for fossilized whale bone, chert, fossil horse teeth, agates, and jaspers.

January 23-27, 2008 Pow Wow Field Trips (Quartzsite) Numerous sites, 2 trips per day, fossils, desert roses, red jasper, green-banded rhyolite, marble, alunite, jasper, hematite, apache tears, bacon rock, and pastilite.

January 27 - February 1, 2008 Wiley Wells (Blythe, CA) for geodes at the Hauser, Cinnamon, Straw, Hidden Saddle beds; and geodes at the Potato Patch; Botryoidal Psilome-

lane geodes, agate, and nodules at the Big Windy; and Ironwood at Old Woman Wash. Additional locations to be determined.

March 8 Morgan Hill, CA for Morgan Hill Poppy Jasper.

April 5 Lovelock, NV for petrified wood.

April 19 Stonyford CA for solid orbicular jasper.

May 3 Carson Hill CA for minerals.

May 2-4 Snyders Pow Wow at Valley Springs.

May 17-18 Fairview NV for agate, geodes, wonderstone.

May 21-26 Tri-Federation Field Trip to Texas Springs for limb casts, agates, and petrified wood.

June 6 Virgin Valley NV for opal.

June 7 Oregon for sunstones.



## Displaying Your Treasures

By Clay Williams,  
El Dorado County Mineral & Gem Society

Whether a case contains mineral specimen(s) or the product of any other related activity, the challenge is to display them to best effect. The author, who is struggling with the mastery of this art and has been for a number of years through successes and occasional failures, was asked by several club VIP's to share some of his insights.

A good place to start is the color scheme. The colors of all supporting elements of the exhibit should be relatively muted and, for the best effect, should both match each other and what is being displayed. The author took labels in colors that were appealing and also blended with his specimens, along with a junk piece of mineral that matched those specimens, to a fabric store where he placed each next to liner fabric candidates. The store clerk must have wondered what was going on. When the winning fabric was finally determined, the only other limitation was, could enough be purchased to cover all liner foam board and any possible fabric covered risers?

The word, muted, cannot be emphasized enough when talking about the case, the liners, the mounts and/or risers and the labels! All should be less eye catching than the object or objects on display. Various earth tone colors are an excellent way to execute this difference. Avoid bright colors, especially red, at all cost! That the last, when on cars, draws inordinate scrutiny from police should be a hint why. The bright purple liner that I saw at a recent show should probably go in favor of something much less attention getting -- after all, the intent is to get people to focus on what is being displayed, not on the background.

Labeling is important and indicates the exhibitor has taken the trouble to correctly identify your treasure. In most cases, such as with minerals and fossils, it should definitely include locality and name information. This should be more specific

than, say, "Emerald, South America." A better effort would state that emerald is a variety of beryl and, at the very least, give the country and province, region or district of origin. It also might be nice to know where a lapped piece of tiger's eye, topaz in a jewelry setting or turquoise in a belt buckle came from. Competitive entries have certain requirements, which vary for different types of displays. Check the AFMS rules and CFMS Supplementary Rules Information. It would also be a good idea to ask for someone's advice if you are contemplating such a move.

Even though not really muted, black, depending on the shade of your liner, usually is fairly readable. Readability is an important issue and is one reason why the author tested a sample label at the fabric store. Readability also limits your choice of fonts. Making that font bold and of a reasonable size helps, as it must be assumed that not everyone can see or read well.

The author's labels are composed on a PC and then printed onto transparencies using an ink-jet. Each transparency page is then cut into individual labels, which may be further trimmed to fit in the spaces between specimens. Gloves are used whenever handling the finished product, as it fingerprints easily. This not-often-seen procedure gets lots of attention from those more interested in the process than the item or items being displayed.

Layout within the case is, of course, a personal thing. However, too much clutter looks very unprofessional and should be avoided; it diminishes the overall impression. Also to be avoided is the placement of lower quality material among stars; the former detracts from the

*continued on page 10*

Displaying your Treasures  
*continued from page 9*

latter. This is easier said than done, especially if one is new to collecting and, therefore, has a limited choice of what to include.

Labels should be of consistent type and not look like they were just thrown in. The liner or liners should cover the entire area visible through the glass, and not be stained or dirty. Avoid giving the appearance that your effort was lacking.

It is a good idea to try putting your case together pre-show. Such a dry run will get the kinks out, if any. It is the time to make final changes and is great practice, especially if the exhibit is at all complex. Also this can uncover any omissions while something can still be done.

Good luck!

*Ed. Note:* Clay Williams has credentials behind his advice. He has entered his displays and won in competition at California Federation of Mineralogical Societies shows. He won the 1st Place Advanced Minerals Trophy for his copper minerals case and was also awarded the coveted Hamel Minerals Trophy at the 2005 CFMS Show in Roseville, CA. In June, he received the 1st Place Masters Minerals Trophy for his copper mineral case at the 2007 CFMS Show in Lancaster, CA

via CFMS Newsletter 11/2007

## 2008 Show Update

by Marc Mullaney

It is almost time for the last push to the show in April. Those of you who have been around the last couple of years have seen some changes in the show. I think they are for the better. We have tried some new things. Some have worked and some have not.

The changes this year will focus on advertising. The last two years we started advertising on the radio. This year we will continue and add a live remote from one station. We are weighing the pros and cons of two, maybe three different stations. Decisions will be made before Christmas, and I will report the details here. We are changing the focus of the newspaper advertising by trying to submit press releases in as many publications as we can. Matt Wood, Linda Spencer, and new member Rita Trahan have agreed to help. For a new advertising trial this year, we will be putting signs on cars. This will be lettering on your side or rear windows and this will cost us about \$5 per sign. We want to start putting these on cars in early February at the latest. Please contact me if you would like to participate.

We still need the usual help with staffing the various positions during the show, and I still have the lead for hospitality, lucky dip (name change on this one imminent), door prizes, security, setup, and signs. I have some ideas about how to make these jobs less scary to everyone. I will be talking to people about these ideas. The next show meeting will be in early January. I will be contacting show committee members with the date, time, and location.

Below is the current list of show committee members. If you are curious about any of open position on the committee, please email me at [geologistm@aol.com](mailto:geologistm@aol.com) or call me at (408) 691-1584. Many of the jobs are relatively simple to oversee, and it's possible that a mentor might be available to assist you through the learning process.

Show Chairman- Marc Mullaney

Dealer Chairman- Randy Harris

Demonstrators- John Eichhorn

Door prizes- OPEN

Exhibitors- Bill Gissler

Judging- Ruth Bailey

Hospitality- OPEN

Kids Area- June Harris

Layout- Herb Vogel and Randy Harris

Mementos- Frank Mullaney

Postcards- Julaine Mullaney

Flyers- Frank Mullaney

Publicity- Frank and Marc Mullaney

Ribbons- Frank Mullaney

Scholarship Booth-

Chris Cherry, Nancy Reineking, and Michael Paone

Security- OPEN

Setup- OPEN

Signs- OPEN

Street Banners- John Eichhorn

Tickets- Julaine Mullaney

Trailers- Herb Vogel

## Tri-Federation Rockhound Rendezvous and Field Trip May 21 – 26, 2008 Texas Springs, Nevada

The **Northwest, Rocky Mountain, and California Federations of Mineralogical Societies** are hosting a Tri-Federation Rockhound Rendezvous and Field Trip to Texas Springs, NV, over Memorial Day Weekend 2008, and all AFMS members are invited. The Texas Springs area is well known for spectacular pink agate limb casts, as well as other agate and petrified wood. Texas Springs Canyon is located approximately 25 miles southeast of the town of Jackpot in the northeast corner of Nevada. In addition to the collecting trips, we will have potluck dinners, happy hours, speakers, evening campfires, tailgate displays, map exchange, and a great rockhound get-together.

**Directions:** The Texas Springs area is located about halfway between Wells, NV and Twin Falls, ID, south of Jackpot, NV, and east of Hwy 93. From the south, take I-80 to Wells and go north on Hwy 93. From the north, take Hwy 93 south out of Twin Falls. About 2.5 miles south of Jackpot, turn east onto the California National Historic Trail and follow the orange plates to camp.

**Camp:** Our camp will be located about 6 miles from Hwy 93 on Trout Creek. Roads to campgrounds and collecting sites are typical desert roads. OK for motor homes and trailers to campgrounds. This is a dry camping area: no services, no hook-ups. We will set up camp starting Tuesday afternoon, May 20th. Please try not to arrive before Wednesday, May 21st; this is due to our BLM camp permit.

### **Schedule:**

Wednesday, May 21 Arrive at camp.

Thursday, May 22 Daily Field Trips

Welcome potluck dinner and get together

Friday, May 23 Daily Field Trips Tailgate displays

Saturday, May 24 Daily Field Trips

Tailgate displays

All Rendezvous Potluck Dinner

Sunday, May 25 Daily Field Trips

Monday, May 26 Break camp to head for home or other adventures

Plan on several potluck dinners and daily happy hours. Bring firewood for evening campfires. We plan on having a good time and collecting some good material. Please notify your respective Federation leader early, but no later than May 16, if you plan to attend. E-mail (or call) if you have questions

or need more information.

This will be a great opportunity for rockhounds from all over the west to meet one another, to share stories and information about collecting in their home areas. Be sure to bring material from your favorite collecting sites to show and share.

**Come join us for a great Tri-Federation Rendezvous of collecting, fun and fellowship.**

Dick Parks, Northwest Federation  
packrats2@msn.com

360-892-3716

Yonis Lone Eagle, Rocky Mt. Federation  
rockymountainrockhounds@yahoo.com  
505-860-2455

Richard Pankey, California Federation  
dickpankey@juno.com  
925-439-7509

via CFMS newsletter, 12/2007.

---

## Are You Ready for a Field Trip?

by Dick Pankey

A couple of months ago I was sent some information about going on field trips. The two pages of information was developed by Barbara Terrill for us in the New Member Handbook of the El Dorado County M&GS. I have seen similar documents on the subject, but this was the most straight forward and complete effort that I have seen. Barbara has written two simple pages: **Field Trip Guidelines** and **Equipment Checklist**. While they were written for new club members who may be new to field trips, I believe and recommend that they are applicable and useful for all people who attend field trips.

I was so impressed with the Field Trip Guidelines and Equipment Checklist that I asked Barbara if we could put them in the CFMS Newsletter. Barbara consented, and you will find them on a separate sheet in the back of the Newsletter. I hope that whoever in each club that receives the CFMS Newsletter will pass these on to your club Field Trip Leader or Editor or to someone to make copies and distribute to all members of your club.

Let us all read the Field Trip Guidelines, the AFMS Code of Ethics, and Practice Safe Rockhounding!

### **General Information**

1. Daily Field Trips:

- All trips will leave at 8:30 AM (Mountain Time),

*continued on page 12*

**SHARP**, from the campgrounds. Assemble at 8:15 for details and instructions for each day's trip. High clearance vehicles recommended to collecting areas.

- All participants are requested to read and sign a Waiver of Liability.
  - We will collect at 4 to 6 different sites: pink limb casts, small limb casts and bogwood, snakeskin agate, jasper/agate limb casts, geodes, and more.
  - We will divide up into small groups, each group going to a different site each day. Everyone will be able to collect at least once at each site. There will be a signup sheet each day for each site.
  - Much of the collecting will be float. Two sites involve some digging, but not too deep. Bring the following tools: rock bags, rock hammer, shovel, small picks, hoe, rock scoop, spray bottle, safety equipment and what ever else you usually bring.
  - High clearance vehicles highly recommended to collecting sites. We will help arrange rides for those who need them.
2. This trip is open to all members of the American Federation of Mineralogical Societies and their guests. This trip is hosted by Northwest, Rocky Mountain, and California Federations of Mineralogical Societies. Everyone who agrees to adhere to the American Federation of Mineralogical Societies Code of Ethics, abide by the direction of the field trip leaders, and practice safe rock hounding is welcome to attend.
3. There are two full hook-up campgrounds in Jackpot: Saguaro RV Park - 800-821-1103 and Spanish Gardens - 800-422-8233. There are several casino/motels also in Jackpot: Cactus Pete's - 800-821-1103, Western Star Resort - 800-655-0643, Four Jacks - 800-251-6313, Barton's "93" - 800-258-2937.
4. We will have a welcome potluck dinner on Thursday evening and the all Rendezvous Potluck dinner on Saturday evening. Bring food to share and your own plates, eating utensils, tables and chairs. Bring your favorite beverages and snacks to share for Happy Hour each afternoon. We will try to have a campfire each evening, so bring firewood.
5. Bring rocks and specimens, etc., from your favorite home collecting area to show and swap at the tailgate display. This will be a good time to swap maps, GPS readings, and information about your favorite home collecting areas.
6. This area of Nevada has a lot to offer rockhounds and outdoor enthusiasts. Plan to spend some extra days after (or before) the Rendezvous. Some suggestions and information will be available at camp.

7. Gas in Jackpot can be expensive. Be sure to fill up your tanks and extra gas cans in Wells or Twin Falls.
8. Be prepared for a variety of weather. In 2003 we had sunny skies with the temperatures in the 70's and cool night in the 40's.

\*\*\*\*\*  
\*\*\*\*\*

**Attention Federation Directors, Field Trip Leaders and Bulletin Editors:**

Please announce this trip at your meetings and publish it in your newsletters. Please make copies of this 2-sided flier and give it to interested club members to get the word out early so people can start planning for this special field trip and get together.

via CFMS newsletter, 12/2007

---

## "House toughens mining standards"

### 1872 Mining law

WASHINGTON - It could get tougher to mine for gold and other hard-rock minerals near Joshua Tree National Park if legislation passed by the House on Thursday becomes law.

The 244-166 vote on the Hard-rock Mining and Reclamation Act was hailed by environmentalists and others who have been pushing for decades to reform the 1872 mining law governing the mining industry.

Unlike the coal, oil, and gas industries, mining companies don't pay royalties on minerals extracted on federal property. Mining also takes precedence over ranching, hunting, fishing, and recreation on public lands.

"It brings us one step closer to repealing one of the most antiquated, anti-environmental laws on the books today," said Jane Danowitz, who heads the Pew Campaign for Responsible Mining.

Rep. Mary Bono, R-Palm Springs, voted against the bill. She was among 163 Republicans who voted against the legislation, opposed by the mining industry.

The bill would impose a 4 percent royalty on existing mines and an 8 percent royalty on new mines.

It also would set new environmental standards on hard-rock mining and create a fund to clean up abandoned mines. Abandoned mines dot the West, including at least 130 hazardous mine areas within the Joshua Tree National Park, according to Paul DePrey, the park's resources chief.

The sites pose a safety hazard for visitors on public lands who could fall to their deaths if they drop into historic shafts dug up by gold prospectors.

continued on page 13

continued from page 12

No deaths have been reported in the park, DePrey said, but officials there have been working to secure the sites to prevent that from happening in the future. They have been able to secure about 20 sites in the past 15 years, he said.

Environmentalists are also concerned about the skyrocketing number of mining claims near public parks as the price of gold and other minerals increases.

Gold is now at \$800 an ounce.

### Here are the numbers

There are 525 claims within 10 miles of Joshua Tree National Park, 207 of them staked within the past four years, according to an analysis by the Environmental Working Group.

"What we've seen is a modern-day land rush," said Dusty Horwitt, a public lands analyst for the organization.

Bullion River Gold Corp., based in Reno, Nev., holds 71 claims within five miles of Joshua Tree National Park. On its Web site, Bullion River Gold Corp. says it is a mineral exploration company focused on discovering and mining gold and silver in the West.

Riverside County has gold, iron, and gypsum deposits, according to Marc Springer, a geologist for the Bureau of Land Management in California.

There are six authorized or pending gold mines on public lands in the county, he said, but it doesn't mean they are currently operating.

Most of the mines in the region are not, he said. There are 26 authorized or pending hard-rock mining operations in the county.

### Water, air issues

DePrey said mining operations near the park could create issues with water and air quality.

It could also create unwanted noise for visitors who go to parks to experience peace and solitude, he said. "There's always the issue of what kind of visitor experience the park visitors are going to have," he said.

Luke Popovich, a spokesman for the National Mining Association, said the mining industry has largely left the state because of state laws and local opposition that made the climate hostile to the industry.

"I don't think it's because there's no minerals there," he said. "It's just not a hospitable environment."

Reprinted from News bytes, issue 306 - BLM California. This legislation could have an effect on some of our hobby activities. Send your comments to your Congress representatives and state your concerns over the pending legislation. - John Martin - CFMS PLAC South

## Be Safe- Be Well

by Don Monroe, AFMS Safety Chair  
via AFMS Newsletter 12/2007-1/2008

### FIRST IN A SERIES – YOUR BRAIN, YOUR INTERNAL COMPUTER

Where Am I?

We have apparently lost much of our instinctive knowledge about where we are at any point in time. I fear that most of us often really do not know where we are. We may wake up at night and be dis-oriented. We may be traveling and be confused about which way we are going. We may know which way is up, but not know which way is North or South. If I fly into a strange city and it is night or a very cloudy day, I may have trouble getting oriented.

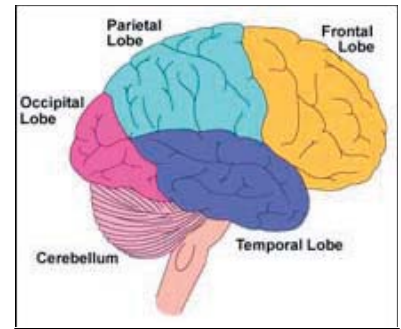
The question then becomes "how do we establish our sense of direction"? One answer can be what we will call "inherent knowledge". This is arrived at by our internal computer which knows where we started and how long or how far we have traveled. From this information we intuitively can figure about where we are located.

It is possible that this "inherent knowledge" is a learned or cultivated technique, and we can lose some of this skill if we do not use it regularly. It seems that those individuals who live in a rural setting may have a more highly developed sense of direction and location.

Most of us also rely on the sun, moon, and stars. Even those of us who have not really studied astronomy acquire a sense of direction from the heavens. We always have a sense of the path of the sun as it traverses the heavens. When I was a boy and worked with my father who was a surveyor, he very often would "shoot Polaris". He would take a sighting with his transit on the North Star at any time of the day. He showed me how to find the North Star in daylight, but I really never got good at it. If you had a sighting on the North Star and the proper book of tables, it was easy to establish where you were. I could never do a lot with the location of the moon because I never studied its location and path to the point that I could navigate even approximately using the moon. If you have a sextant (which I do) and can use it (which I could), you can do amazing calculations to find out your location using the stars.

We can and should rely on other methods to avoid getting lost. How about a map and a compass? This technique works. A recent report by the rescue personnel of the State of Alabama stated that a very small percentage of lost people had even bothered to carry a map or a compass with them. Now I hate to be critical, but that is stupid.

The last approach that is rapidly gaining favor is the GPS or Global Positioning System. These gadgets are really taking the world by storm and are used by many of us. There is an endless variety of units, and you may want to study what is out there before making a purchase. The only other advice I have is that you need to learn how to operate your system before you need it. DO NOT wait until you are out in the wild before you turn it on to see how it works!



**SANTA CLARA VALLEY GEM and MINERAL SOCIETY  
GENERAL MEETING MINUTES  
NOVEMBER 27TH , 2007**

President Randy Harris called the meeting to order at 7:45 PM at the Belwood Cabana Club in Los Gatos. Members and guests were welcomed. Minutes were approved as printed in the Breccia. The board meeting will be at Larry Moore's home, November 29th , 7:30 pm.

**CORRESPONDENCE:** Letters from: Deb and Gab Arambula notes with a donation to the Scholarship Fund, Gab will be attending Cal Poly, CO-OP field trip notice for Lavic Siding trip, NBFT meeting notice, rock sale notice, post card for rock calendar from Gem Shop.

**NEW MEMBERS:** Anita McCarthy, Colleen Jackson, and Mike Blakely were presented with their membership packages and welcomed to the club.

**INSTALLATION DINNER: ( CHRISTMAS PARTY ):** December 4<sup>th</sup>, dinner at 7pm, help with the set up starts at 5:30pm. . Bring an unwrapped donation of a toy for the "Toys for Tots" program.

**SUNSHINE REPORT:** See details in the Breccia.

**HOSPITALITY:** There were 49 members and 4 guests in attendance tonight.

**STUDY GROUPS:** See details in the Breccia for all groups .Contact the group leader for info and time.

**Faceters** will meet at Max Casey's house Saturday morning Dec. 3rd, 9am to 12pm, please contact him if you plan to attend

**Jewelry Study** group will meet Jan 3rd at the Cabana club house, 7pm to 10 pm.

**Mineraleers** will meet at Chuck Boblenz's house. The topic will be Tourmaline.

**Cutaways and Carvers** will meet Dec13th, 7pm, at John Eichhorn's house.

**PLAC:** See details in the Breccia.

**FEDERATION:** See details in the Breccia.

**SHOW:** Marc Mullaney displayed the car window sign for the show. June Harris has a wish list for the Kids Area, contact her if you can supply anything.

**MEMBER DISPLAY:** None this month.

**FIELD TRIPS:** See details in the Breccia. SCVGMS had a field trip to Morgan Hill. Jan 5<sup>th</sup> will be a Benitoite Mine field trip. The TV show Cash and Treasures will be featuring the Benitoite Mine in a future program.

**PROGRAM:** Silent Auction. Tables #2&5 closed at 8:35, Tables #7&1 closed at 8:55, All other Tables closed at 9:30.

**AUDITING COMMITTEE:** Rick Kennedy , Ruth Bailey, and Chuck Boblenz were elected for the 2008 Auditing Committee.

**Elections were held for the 2008 Officers and Board of Directors:** President, Randy Harris; Vice President, Rick Kennedy; Secretary, John Eichhorn; Treasurer, Frank Mullaney; Editor, June Harris; Federation Director, Ruth Bailey; Alternate Federation Director, Frank Monez; Board of directors, Matt Woods, RK Owen, Mark Mullaney, Michael Paone, Chris Cherry; Parliamentarian, Dean Welder; Historian, Linda Spencer .

Meeting adjourned at 9:30 PM.

Respectfully submitted, John Eichhorn, Secretary

**Santa Clara Valley Gem and Mineral Society  
Board Meeting Minutes  
November 29th , 2007**

President Randy Harris called the meeting to order at 7:45 PM at the home of Larry Moore on November 29th. All board members were present except for, Dean Welder and Parliamentarian Bill Gissler. M/S/P to approve the minutes of the October 25th, 2007 board meeting.

**Correspondence:** Letters from: Deb and Gab Arambula notes with a \$25.00 donation to the scholarship fund, Keesa Stuart dues notice returned, school auction notice, Dodge and Cox fund semi-annual report, Yellow Pages bill, PO box refund notice, coupon package.

**New Members:** M/S/P to accept Stephanie Haughton and Sonia Dyer as new members.

**Treasurer's Report:** M/S/P to pay bills. M/S/P to send \$25.00 to the CFMS Endowment Fund in memory of Peggy Loranger.

**Committee Reports:**

**Show:** Radio and newspaper adds discussed.

**Unfinished Business:** Discussion on the Stonedawgs and Juniors group. M/S/P Motion to rescind last months vote on motion about the combined groups as printed in the October 25<sup>th</sup>, 2007 board meeting minutes. M/S/P to table discussion until the January 2008 Board meeting.

Ruth Bailey will contact Mike Kokonos with questions on guest limitations.

**New Business:** Discussion on the sale of advertisements in the Breccia. Frank Mullaney to get information on the costs from another club.

M/S/P to have Demo Days once a quarter.

M/S/P to continue socials before the meetings in 2008.

M/S/P to sponsor the Jewelry study group at the Cabana club in 2008.

M/S/P to replace the trailer tires. John Eichhorn to get price info.

Bylaws committee had meeting, and changes will be addressed.

Directories are ready for print except for new members and 2008 club officers.

M/S/P to adjourn at 9:40 pm.

Everyone enjoyed refreshments after the meeting.

Respectfully submitted,  
John Eichhorn, Secretary

**Santa Clara Valley Gem and Mineral Society  
Joint Board Meeting Minutes  
December 6<sup>TH</sup>, 2007**

President Randy Harris called the meeting to order at 7:45 PM at the home of Ruth Bailey on December 6th. All board members were present except for, Jim Ziegler and Parliamentarian Bill Gissler. M/S/P to approve the minutes of the November 29th, 2007 board meeting as corrected.

**Correspondence:** None

**New Members:** None

**Treasurer's Report:** M/S/P to pay bills.

M/S/P to allow dealer advertisements in the Breccia, at ¼ page \$10, 1/8 page \$5, at 5 or 10 issue increments. Revenue target not to exceed \$999.00 per year. Maximum capacity will be two pages. Advertisements will be Rockhound hobby-related.

M/S/P to allow classified adds at 40 words per add, limit one add per Quarter, limit one add per household, on a space available basis, first come, first serve. Add will be for one issue of the Breccia. Advertisements will be Rockhound hobby-related.

**Committee Reports:**

**Trailer Custodian:** Herb Vogel gave a history report on the two trailers. John Eichhorn and Herb Vogel will work together on obtaining tires and tire guards.

**Show:** M/S/P to have show adds with a \$5000.00 limit. Discussion on car window stickers, radio advertisements, and street banners.

**Unfinished Business:** No motion to rescind the motion from the November 29<sup>th</sup>, 2007 board meeting to table the Stonedawgs discussion until the January 2008 board meeting.

M/S/P to withdraw sponsorship of the Stonedawgs.

**New Business:** None.

M/S/P to adjourn at 9:00 pm.

President Randy Harris called the meeting to order at 9:00 pm with the new 2008 Officers and Board of Directors. All board members were present.

**New Business:** M/S/P to have Gail Matthews work on the All American Club project, with a \$70 .00 fund.

M/S/P to give \$50.00 to the AFMS Endowment Fund.

M/S/P to allow members to post rockhound related sales notices at the general meetings.

M/S/P to allow Cabana Club room reservations for 2008.

M/S/P the board recommends the 2009 CFMS show be at the Santa Clara fairgrounds.

M/S/P to adjourn at 9:45pm .

Everyone enjoyed refreshments after the meeting.

Respectfully submitted,

John Eichhorn, Secretary

Santa Clara Valley Gem and Mineral Society  
Treasurer's report  
November 2007

Beginning Balance: \$11,837.99

Receipts

Installation Dinner	\$490.00
Jewelers Study Group	\$137.00
Silent Auction	\$460.00
Dues and Initiation	\$ 20.00
Scholarship Donation	\$ 25.00
Show 2008 Kids Area	\$656.50
Dichroic Glass Class	<u>\$550.00</u>

Total Receipts \$2,338.50

Disbursements

2008 Show Scholarship	\$117.08
NBFT Dues	\$ 10.00
Breccia postage	\$ 29.00
CFMS Scholarship Fund	\$150.00
Federation Director Briefcase	\$ 64.94
Federation Director Mileage	\$ 40.00
Newsletter copying Expression	\$ 48.50
2008 Show Kids Area copying	\$ 82.69
Dichroic Glass Class	\$650.00
Dealer, Kids Area, Scholarship	\$873.78
Silent Auction Expense	\$ 10.00
2008 Show Exhibitor expense	\$ 34.41
2008 Show Scholarship booth	\$ 49.40
Website Expense	\$ 16.38
Refreshments	\$ 30.71
Juniors	\$ 17.31
Telephone Bills	\$ 86.01
Officer bars and triangles	<u>\$ 16.00</u>

Total Disbursements \$2,325.67

Ending Balance \$11,850.82