

Santa Clara Valley Gem and Mineral Society

Send Exchange Bulletins to:  
June Harris  
107 Dell Way  
Scotts Valley, CA 95066



Please Deliver Promptly

# BRECCIA

Santa Clara Valley  
Gem and Mineral Society



All American Club

Volume 55  
Number 10

San Jose, CA  
October, 2008

## SCVGMS ELECTED OFFICERS

President: Randy Harris  
(831) 438-5150  
Vice President: Rick Kennedy  
(408) 529-9690  
Secretary: John Eichhorn  
(408) 749-0523  
Treasurer: Frank Mullaney  
(408) 266-1791  
Editor: June Harris  
(831) 438-5150  
Federation Director: Ruth Bailey  
(408) 248-6195  
Alternate Fed. Director: Frank Monez  
(408) 578-7067  
Directors:  
Chris Cherry (925) 200-0384  
Marc Mullaney (408) 691-1584  
RK Owen (408) 377-5373  
Michael Paone (408) 340-3258  
Matt Wood (408) 744-9402  
Historian: Linda Spencer (408) 997-7319  
Parliamentarian: Dean Welder  
(408) 353-2675

## SCVGMS COMMITTEE HEADS

Donation Receiving Committee Chairman:  
George Yamashita  
Field Trip Committee Coordinator:  
Dean Welder  
Field Trip Committee: Randy Harris,  
John Eichhorn, & Marc Mullaney  
Financial Advisory Committee:  
Ruth Bailey & Chuck Boblenz  
Founder's Day Picnic Food:  
Nancy Reineking & Michael Paone  
Founder's Day Raffle: Claire Ferguson  
Founder's Day Bingo: John Eichhorn  
Hospitality: Chris Cherry  
Installation Dinner: Marc Mullaney  
Librarian: Marsha Owen  
Member Displays: Rick Kennedy  
PLAC: (Public Lands Advisory Committee)  
Frank Monez  
Program: OPEN  
Refreshments: Linda Spencer  
Secret Auction: Donation Receiving Comm.  
Sergeant-at-arms: Vito Cangemi & JT Fuller  
Show 2008: Marc Mullaney  
Show 2009: Frank Mullaney  
Silent Auction: John and Sylvia Palmieri  
Social: June Harris  
Sunshine: Ernestine Smith  
Trailer Custodian: Herb Vogel  
Trophies: Frank Mullaney  
Webmaster: RK Owen

# Santa Clara Valley Gem and Mineral Society

P.O. Box 54, San Jose, CA 95103-0054

Website: [www.scvgms.org](http://www.scvgms.org)

Email: [info@scvgms.org](mailto:info@scvgms.org)

Phone Number (408) 265-1422

## An Invitation

This society is pleased to invite guests to attend general meetings, study groups, and field trips. General meetings are normally held the fourth Tuesday of every month at 7:45 PM at 100 Belwood Gateway (the Cabana Club), Los Gatos, CA 95032. Belwood Gateway is just south of Blossom Hill Road between Leigh Avenue and Harwood Road.

***Our next general meeting will be on October 28, 2008 at the Cabana Club, 100 Belwood Gateway, Los Gatos, CA 95032 at 7:45 PM.***

***Our next board meeting will be on October 30, 2008, at Randy Harris' home, 107 Dell Way, Scotts Valley, CA 95066 at 7:30 PM.***

Our Society's Purpose: The inculcation of a love of rocks and minerals by the furtherance of members' interests in the earth sciences and by education in all facets of related educational activities with the promotion of good fellowship, proper ethics, and conduct.

Our Membership Requirements: Attendance at two general meetings within twelve months. This society is a member of the California Federation of Mineralogical Societies (CFMS) and is affiliated with the American Federation of Mineralogical Societies (AFMS). Dues are \$10.00 per year.

Our Newsletter, the Breccia, is published ten times annually. The deadline for most articles is the Sunday before the regular meeting. The Breccia Editor is June Harris who may be contacted by email at [juneconeyharris@yahoo.com](mailto:juneconeyharris@yahoo.com) or by phone at (831) 438-5150. The Breccia is proofread by Linda Spencer. Ruth Bailey handles all aspects of mailing. Exchange bulletins may be sent to June Harris at the following address: 107 Dell Way, Scotts Valley, CA 95066. Permission to copy is freely granted to American Federation of Mineralogical Societies (AFMS) affiliated clubs when proper credit is given.

## Study Group Leaders

For information on a study group, please call the leader(s) listed below

Cutaways & Carvers	Frank Mullaney	(408) 266-1791
Facet Cutters	Max Casey	(408) 227-0526
Fossileers	Gail Matthews	(650) 962-9960
Jewelers	Marc Mullaney	(408) 691-1584
Mineraleers	Chuck Boblenz	(408) 734-2473
Smithies	Kelly Van Vleck & Pat Speece	(408) 262-8187
	Pat Speece	(408) 266-4327
Stringers	Pat Speece	(408) 266-4327

# Randy's Ramblings

Hello Fellow Rockhounds,

If you are going to any rock and gem shows in the near future and you see a dealer that you would like to see at our show, please take down their contact information and send it to me. Include their E-mail address, if they have one. I currently have 32 dealer contracts for the show. We are looking for about 60 dealers. There should be space for several new dealers. I think it would be good to have some new faces.

I would like to thank everyone who filled out a Time and Talent sheet. This will be a great help to Nominating Committee. If you did not have the opportunity to turn one in and you would like to take a more active role in the club, please call Frank Mullaney and let him know. The Time and Talent sheets also help when it comes time for the President to appoint committees. There are several committee positions that are fairly easy. It would be a good place for a new member to get involved. The Nominating Committee will announce their recommendations for new officers in October. The election and Silent Auction will be held at the November meeting.

The Board has reserved the Cabana Club for our annual Installation Dinner. We are having it catered by Willow Street. The reservation form can be printed from the Website, or you can look in the Breccia for last month. The cost will be \$10 per person attending. This is the same price as last year, and I think the food will be excellent. Please send in your reservation early so we can order the proper amount of food. We will be having a Toys for Tots collection as we have in past years. Let me know if you would like to help decorate the Cabana Club.

There will be a potluck before the October meeting. We will start eating at 6:30 PM. Please bring a salad, main dish, side dish or dessert to share. Guests are welcome to join us. Come and have a good time!

## Pizza and beer party (root-beer that is) at Demo Day, Saturday, Oct. 25

We are requesting all helping hands. Arrive any time after 11:00 AM and stay for as long as you want. We will be making bracelet kits, necklaces, and key-rings; filling rock bags; etc... all for the scholarship booth and the Kids Area at our big C.F.M.S. (California Federation of Mineral Societies) show. Everyone can contribute (and eat pizza), so bring the kids, the grandkids, the neighbors. Call Michael Paone at (408) 340-3258 or sign up at the next club meeting so we can get enough pizza. Any helping hand is appreciated.

**Demonstration Day  
October 25th  
from 10 AM - 3 PM  
at the Cabana Club  
100 Belwood Gateway,  
Los Gatos, CA 95032**

**Come by and invite a friend to  
see what the various study  
groups are doing.**

**ALL HANDS ON DECK  
OUR DISPLAY CASES NEED REPAIR  
WORK PARTY DAYS  
OCTOBER 4 & 5  
9AM—4PM  
RUTH BAILEY'S HOME  
2857 ADDISON PLACE, SANTA CLARA**

**LUNCH WILL BE PROVIDED**

**CALL FRANK MULLANEY (408) 266-1791 FOR  
MORE INFORMATION. PLEASE BRING SAW  
HORSES, PALM SANDERS, GLOVES, CRESCENT  
WRENCHES, SCREWDRIVERS, ETC.**

# Check out what our study groups are doing!!!

## Mineraleers by Chuck Boblenz



The Mineraleers met on the September 9th at the Boblenz' residence with 13 attendees, and we talked about fluorite. During the conversations, specimens were passed around for each of us to look at. Bill Spence brought some excellent miniature specimens of Fluorite from various locations that he shared and made many of us "oh" and "ah."

We created a schedule of meetings and topics for the coming months that are:

Date	Residence	Topic
Oct 7th	Mike Paone	Labradorite
Nov 11th	Larry & Winnie Moore	Dendrites/Plumes
Dec 9th	Randy & June Harris	Obsidian
Jan 6th	Frank Monez	Topaz
Feb 10th	Chuck + Jeri Boblenz	Chlorite
Mar 3rd	Bill + Sharon Gissler	Quartz/Sand

The meeting was adjourned, and members took closer looks at the fine specimens and continued discussions in the kitchen where Jeri served delicious refreshments.

Please take a look at the topics and dates for future meetings and come out and join us. Plan to bring your specimens to show and share and enjoy a common interest in minerals and related subjects.



## Faceters

The Faceters study group will resume meeting in October. The group is for anyone who would like to learn the art of faceting a gemstone. Novices are welcomed and encouraged. Contact Max Casey at (408) 227-0526 for more information about this study group.

## Cutaways and Carvers



The Cutaways and Carvers study group will be meeting at John Eichhorn's home on Saturday, October 18th at 1:00 PM. Call John at (408) 749-0523 to RSVP and for more information about his address and project suggestions and ideas.



## Jewelers by Marc Mullaney

The next Jewelers meeting will be on October 2nd at the Marc Mullaney's home, 1685 Cross Way, San Jose, CA 95125. We will be working on bezels. Questions? Please email Marc at [geologistm@aol.com](mailto:geologistm@aol.com) or call him at (408) 691-1584.

## Stringers by Pat Speece



Stringers will have a display at the September general meeting of some of the projects we have done. We will also accept signups then. However, you can sign up anytime by emailing (preferred) at [pat.speece@sbcglobal.net](mailto:pat.speece@sbcglobal.net) or calling me (408) 266-4327.

The Stringers group supplies all tools, equipment, and hardware, as well as many beads. Students are welcome to bring their own tools, equipment and/or hardware, and are encouraged to bring their own beads since we don't have many, and it is a rather motley bunch.

I'm setting up an October date for our next get-together. Questions? Email or phone me, number and email above.



## Fossileers by Gail Matthews

The next meeting will be at the October 25th Demo Day at 1 pm, to discuss plate tectonics and fossils that support this correlated fact. Contact Gail Matthews at (650) 962-9960 or [glassrockwood@aol.com](mailto:glassrockwood@aol.com).

## Smithies by Kelly Van Vleck



If you are interested in learning to work with silver, please call Pat Speece at (408) 266-4327, or email at [pat.speece@sbcglobal.net](mailto:pat.speece@sbcglobal.net), or Kelly Van Vleck at [kellyv22000@yahoo.com](mailto:kellyv22000@yahoo.com), or (408) 262-8187, for more information about learning this art.

# Member Displays

by Rick Kennedy

As we all learned from our program on Intarsia, it is quite a difficult skill to learn and as such, only our speaker brought any samples of his hard work. Luckily, there were a few people that brought non-intarsia related displays so we did not have any empty tables! Realistically, Jennifer Le and Jim Ziegler brought enough for everyone! They purchased an entire collection consisting of rock and mineral samples compiled in 1952 and the cases they were displayed in. After much restoration, it was an impressive sight indeed.

Larry Moore made it out to New Mexico and collected several different agate samples from mile + high locations with the Roswell club, though rumor has it that they were actually looking for that other spacecraft! Ed and Eileen Ferner brought some of their handiwork back from Camp Paradise. Between wire wrapping, dichroic glass work, silversmithing, and a myriad of stonework, anybody could learn something new there! Pat Speece also brought samples of some of the Stringer's recent work.

Thanks to all who brought stuff to show off. Next month's victims are: the entire Yamashita clan (You know who you are!); John Zerbini, anyone who has joined the club since January, and you (you know who you are... don't ya?).

## DRC Report by Jane Yamashita

Not much action this month. We are all looking forward to the Jade Festival trip. If anyone hears of any donations, please call George Yamashita at (408) 353-2982.

## '09 CFMS Show meeting

**October 21, 2008  
7:30 PM at  
Ruth Bailey's home**

All interested members are invited. Call Frank Mullaney, (408) 266-1791, for more information and directions to Ruth's home.

# Sunshine by Ernestine Smith



If you have information concerning any member who is ill, hospitalized, or has had a death in the family, please contact our Sunshine person, Ernestine Smith, (408) 395-5035.

## October Meeting Program

**Mines, Minerals, and History  
in the San Juan Mountains  
near Silverton, Colorado**

by Larry Schemel, USGS scientist emeritus

## North Bay Field Trip (NBFT) Fall meeting

**Saturday, October 11, 2008  
at the House in Vineyard  
5446 Trubody Lane, Napa, 94558  
Hosted by the President of the Napa  
Valley Rock and Gem Club  
9-10 AM Registration  
10-Noon Business meeting  
12-1 PM Lunch  
1-2 PM Manhattan Mine Presentation  
2-3 PM Conclude Silent Auction**

**POTLUCK  
before the October meeting  
October 28, 2008  
at the Cabana Club.  
Club to provide drinks  
and paper goods.  
Please bring a  
potluck dish to share.  
Dinner at 6:30**

# SCVGMS 2008 Calendar



**October 2** Jewelers meeting at Marc Mullaney's home from 7-10 PM.

**October 4-5** Work Day to repair show cases. Everyone's help is needed. 9 AM—4 PM

**October 7** Mineraleers meeting at Michael Paone's home at 7:30 PM.

**October 11** Bus Trip to Jade Festival

**October 11** North Bay Field Trip Fall meeting in Napa

**October 18** Cutaways and Carvers meeting at John Eichhorn's home at 1:00 PM.

**October 21** Show meeting at Ruth Bailey's at 7:30 PM

**October 25** Demonstration Day at the Cabana Club from 10 AM-3 PM. All study groups are requested to demonstrate.

**October 25** Fossileers meeting at Demo Day at 1:00 PM.

**October 25** Play Day at the Cabana Club 11-4. Come help the Scholarship Booth committee make prizes, bead kits, and stuff rock bags. Pizza and drinks for all who help.

**October 28 Potluck and General meeting at the Cabana Club. Potluck 6:30 PM, Meeting 7:45 PM Club will provide drinks and paper goods. Members provide main dish, salad, side dish, or dessert to share, at least 10 servings, please.**

**October 30** Board meeting at Randy Harris' home at 7:30 PM.

**November 4** Show meeting at Ruth Bailey's home at 7:30 PM.

**November 6** Jewelers meeting at Marc Mullaney's home from 7-10 PM.

**November 11** Mineraleers meeting at Larry Moore's home at 7:30 PM.

**November 25 General meeting at the Cabana Club at 7:45 PM. Elections and Silent Auction throughout the evening. Board meeting immediately following the general meeting.**

**December 2** Installation Dinner at the Cabana Club at 7:00 PM. Please bring an unwrapped toy to donate to Toys for Tots. Reservations required.

**December 4** Joint Board meeting at Ruth Bailey's home at 7:30 PM.

**December 9** Mineraleers meeting at Randy Harris' home at 7:30 PM.

## **2009 DATES**

**January 6, 2009** Mineraleers meeting at Frank Monez's home at 7:30 PM.

**January 20, 2009** Show meeting at Ruth Bailey's home at 7:30 PM.

**January 27, 2009 General meeting at the Cabana Club at 7:45 PM.**

**January 29, 2009** Board meeting at 7:30 PM location TBD

**February 10, 2009** Mineraleers meeting at Chuck Boblenz's home at 7:30 PM

**February 17, 2009** Show meeting at Ruth Bailey's home at 7:30 PM.

**March 3, 2009** Mineraleers meeting at Bill Gissler's home at 7:30 PM.

**February 24, 2009 General meeting at the Cabana Club at 7:45 PM.**

**February 26, 2009** Board meeting at 7:30 PM location TBD

**March 17, 2009** Show meeting at Ruth Bailey's home at 7:30 PM.

**March 24, 2009 General meeting at the Cabana Club at 7:45 PM.**

**March 26, 2009** Board meeting at 7:30 PM location TBD

**April 15-16, 2009** CFMS Show set-up at the Fairgrounds.

**April 17-19, 2009** CFMS/SCVGMS Show 9-5 Friday, 10-5 Saturday and Sunday

**April 28, 2009 General meeting at the Cabana Club at 7:45 PM.**

**April 30, 2009** Board meeting at 7:30 PM location TBD

**May 1-3, 2009** Snyders Ranch Pow Wow

**May 26, 2009 General meeting at the Cabana Club at 7:45 PM.**

**May 28, 2009** Board meeting at 7:30 PM location TBD

**June 23, 2009 General meeting at the Cabana Club at 7:45 PM.**

**June 25, 2009** Board meeting at 7:30 PM location TBD

**July 28, 2009 General meeting at the Cabana Club at 7:45 PM.**

**July 30, 2009** Board meeting at 7:30 PM location TBD

**August 25, 2009 General meeting at the Cabana Club at 7:45 PM.**

**August 27, 2009** Board meeting at 7:30 PM location TBD

**September 22, 2009 General meeting at the Cabana Club at 7:45 PM.**

**September 24, 2009** Board meeting at 7:30 PM location TBD

**October 27, 2009 General meeting at the Cabana Club at 7:45 PM.**

**October 29, 2009** Board meeting at 7:30 PM location TBD

**November 24, 2009 General meeting at the Cabana Club at 7:45 PM. Board meeting immediately following general meeting.**

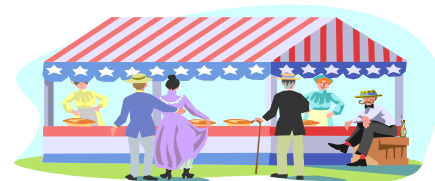
## **THANK YOU, THANK YOU, THANK YOU FROM JUNE HARRIS FOR THE KIDS AREA**

I would like to thank the following people for making Rock Bags for the Kids Area: Ruth Bailey, Chris Cherry, Jeanmarie Finigan, Pam Montagne, Marsha Owen, Donna Garland, Grace Santos, Adrienne Comanda, Ernestine Smith, Ann Marie Mullaney, Julaine Mullaney. We have met our goal of 3000 bags. Yeah!!!

I would also like to thank Chuck Boblenz for identifying a collection of rocks and minerals that was donated to the Kids Area. Many thanks for your expertise and time.

# CFMS Show Schedule

Changes to this calendar are printed in italics. For the latest version of the CFMS Show Schedule go to [www.cfmsinc.org](http://www.cfmsinc.org)



**October 5 2008, Fallbrook, CA**, Fallbrook Gem & Mineral Society, "Fall Festival of Gems", FGMS Museum, 123 W. Alvarado, Hours: 10 - 4, Mary Fong-Walker (760) 728-1130, Diane Tjepkes (780) 468-8028

**October 11-12 2008, Grass Valley, CA**, Nevada County Gem & Mineral Society, "Earth's Treasures", Nevada County Fairgrounds, 11228 McCourtney Road, Hours: 10 - 5 both days, Kim Moore (530) 470-0388 Email: [Kmoore160@comcast.net](mailto:Kmoore160@comcast.net)

**October 11 - 12 2008, Trona, CA**, Searles Lake Gem & Mineral Society, "66th Annual Gem-O-Rama", Searles Lake Gem & Mineral Society, 13337 Main Street, Hours: Sat. 7:30 - 5; Sun. 7:30 - 4, Bonnie Fairchild (760) 372-5356, Email: [glgms@wvisp.com](mailto:glgms@wvisp.com), Website: [www1.jwvisp.com/tronagemclub/tronagemclub.html](http://www1.jwvisp.com/tronagemclub/tronagemclub.html)

**October 11-12 2008, Lakeside, CA**, Cajon Valley Gem & Mineral Society, Lakeside Rodeo Grounds, 12584 Mapleview, Hours: 10-5 both days, David Newton (619) 390-5054, Email: [jontom@nethere.com](mailto:jontom@nethere.com), Webpage: [ecvgs.com](http://ecvgs.com)

**October 11-12 2008, Vista, CA**, Vista Gem & Mineral Society, Antique Gas & Steam Engine Museum, 2040 North Sante Fe Avenue, Hours: Sat. 10-5, Sun. 10-4, Cherie Wilson (760) 941-7073, Lois M. Hair (760) 724-0395

**October 18 2008, West Hills, CA**, Woodland Hills Rock Chippers, First United Methodist Church, 22700 Sherman Way, Hours: 10-5, Virginia Roramel (951) 403-2634, Email: [show@rockchippers.org](mailto:show@rockchippers.org), Webpage: [www.rockchippers.org](http://www.rockchippers.org)

**October 18-19 2008, Anderson, CA**, Shasta Gem & Mineral Society, Shasta District Fairgrounds, Hours: Sat. 9-5: Sun. 10-4, Bill Seward (530) 365-864, E-mail: [glseward@sbcglobal.net](mailto:glseward@sbcglobal.net)

**October 18-19 2008, Placerville, CA**, El Dorado County Mineral & Gem Society, El Dorado County Fairgrounds, 100 Placerville Drive, Hours: 10 - 5 both days, Jackie Cerrato (530) 677-2975, Email: [info@rockandgemshow.org](mailto:info@rockandgemshow.org), Show Website: <http://www.rockandgemshow.org>, Website: [eldoradomineralandgem.org](http://eldoradomineralandgem.org)

**October 18-19 2008, Santa Rosa, CA**, Santa Rosa Mineral & Gem Society, Veterans' Memorial Auditorium, 1351 Maple Avenue, Santa Rosa, Hours: Sat. 10-6, Sun. 10-5, Tom Dering (707) 564-4537, Email: [farmarch@sonic.net](mailto:farmarch@sonic.net), Website: [www.gem-n-i.org](http://www.gem-n-i.org)

**October 18-19 2008, Whittier, CA**, Whittier Gem & Mineral Society, Whittier Community Center, 7630 Washington Avenue, Hours: Sat. 10-5 both days, Jay Valle: (626) 934-9764, Email: [res19pnb@verizon.net](mailto:res19pnb@verizon.net)

**October 25-26, 2008, Los Altos, CA**, Peninsula Gem & Geology Society, Los Altos Youth Center, One San Antonio Road, Hours: Sat. 9-5 pm, Sun. 9 - 4 pm, Stan Bogosian: (408)569-2489, Email: [sbogosian@aol.com](mailto:sbogosian@aol.com)

**November 1 - 2 2008, San Diego, CA**, San Diego Mineral & Gem Society, Al Bahr Shrine Center, 5440 Kearny Mesa Road, Hours: Sat. 9:30-5, Sun 10 -4, Alva Whetton (619) 823-6787

**November 1-2 2008, Concord, CA**, Contra Costa Mineral & Gem Society, Centre Concord - 5298 Clayton Rd., Clayton Fair Shopping Center, Hours: 10 - 5 both days, Sam Woolsey (925) 837-3287, Email: [sdwools@earthlink.net](mailto:sdwools@earthlink.net), Website: [www.ccmgs.org](http://www.ccmgs.org)

**November 1 - 2 2008, Ridgecrest, CA**, Indian Wells Gem & Mineral Society, Desert Empire Fairgrounds, Mesquite Hall, 520 S. Richmond Rd., Hours: 9-5 both days, John De Rosa (760) 375-7905, Vickie black (760) 371-4416

**November 7, 8, 9 2007, Eureka, CA**, Humboldt Gem & Mineral Society, Redwood Acres Fairgrounds, 3750 Harris, Hours: Fri. 9-6, Sat. 10-6, Sun. 10-5, Toni Tyson (707) 725-2890, Email: [BLUII911@msn.com](mailto:BLUII911@msn.com)

**November 8-9 2007, Lancaster, CA**, Palmdale Gem & Mineral Society, Antelope Valley Fairgrounds, 2551 W. Ave. H, Hwy 14, Hours: 9 - 5 both days, Susan Chassin-Walblom (661) 943-1861, Email: [SLChaisson@yahoo.com](mailto:SLChaisson@yahoo.com), Website: [pgms@antelecom.net](http://pgms@antelecom.net)

**November 8 - 9 2008, Yuba City, CA**, Sutter Buttes Gem & Mineral Society, "Festival of Gems", Grace Franklin Hall, 442 Franklin Avenue, Hours: Sat. 9 - 5; Sun. 9 - 4, Cliff Swenson (530) 272-3752, Inez Berg (530) 633-4612

**November 22-23 2008, Oxnard, CA**, Oxnard Gem & Mineral Society, Performing Arts Center, 800 Hobson Way, Hours: Sat. 9 - 5, Sun. 10-4, Miriam Tetrault (805) 642-5779, E-mail: [miriamtetrault@hotmail.com](mailto:miriamtetrault@hotmail.com), Website: [www.OGMS.net](http://www.OGMS.net)

**December 6-7 2008, Barstow, CA**, Mojave Gem & Mineral Society, Cora Harper Community Center, 841 S. Barstow Road, Hours: 10-5 Both Days, Gene Haines (760) 256-0595, E-mail: [email@mdgms.org](mailto:email@mdgms.org), Website: [www.mdgms.org](http://www.mdgms.org)

**January 17-18 2009, Exeter, CA**, Tule Gem & Mineral Society, Exter Memorial Bldg., 420 N Kaweah, Exter, Hours: Sat. 10 - 5, Sun. 10-4, Margaret Buchmann (599) 739-0401, Email: [mab@mindinfo.com](mailto:mab@mindinfo.com), Webpage: [tulegem.org](http://tulegem.org)

**February 13-22, 2009, Indio, CA**, San Gorgonio Mineral & Gem Society, Riverside County Fair & National Date Festival, Gem amp; Mineral Building Bldg #1, 46-350 Arabia Street, Hours: 10 am - 10 pm, Bert Grisham: (915) 849-1674, Email: [bert67@verizon.net](mailto:bert67@verizon.net)

**February 27 - March 8 2009, Imperial, CA**, Imperial Valley Gem and Mineral Society, Inc., Gem and Mineral Building on Fairgrounds, Hours: Fro., Sat. & Sun. Noon - 10, Mon. thru Thur. 4pm - 10pm, Jim Strain (760) 356-2361

**March 6, 7 & 8 2009, Hayward, CA**, Mineral and Gem Society of Castro Valley, Centennial Hall, 22292 Foothill Blvd., Hours: Fri. & Sat. 10 - 6, Sun. 10-5, Larry Ham (510) 887-9007, E-mail: [showchair@mgscv.org](mailto:showchair@mgscv.org), Website: <http://www.mgscv.org>

**March 7 - 8 2009, Ventura, CA**, Ventura Gem and Mineral Society, Inc., 47th Annual Gem, Mineral, Lapidary & Fossil Show, Seaside Park, Ventura County Fairgrounds, Hours: Sat. 10 - 5, Sun. 10-4, Website: <http://www.vgms.org>

**March 13, 14, 15 2009, Stoddard Wells, CA**, Victor Valley Gem & Mineral Club, 33rd Annual Tailgate, Held off Stoddard Wells Road in Apple Valley, Hours: 10-5 Daily, Tailgate Map (Google): N34.670650 W117.108983, (760) 243-2330, Website: [www.vvvgms.org](http://www.vvvgms.org)

**March 14-15 2009, Turlock, CA**, Mother Lode Mineral Society, Stanislaus County Fairgrounds, 900 N. Broadway, Turlock, Hours: Sat. 10 - 6, Sun 10-5, Bud & Terry McMillin (209) 524-3494, Email: [terry.mcmillin@yahoo.com](mailto:terry.mcmillin@yahoo.com), Website: [www.motherlodemineralsociety.com](http://www.motherlodemineralsociety.com)

**March 14-15 2008, Spreckels, CA**, Salinas Valley Rock & Gem Club, Veteran's Memorial Hall, 5th & Liano Streets, Hours: 10-5 daily, Teri Beck (831) 679-2896, Email: [taitani@cententric.net](mailto:taitani@cententric.net), Website: [salinasrockandgem.com](http://salinasrockandgem.com)

**March 28 - 29 2009, Torrance, CA**, South Bay Lapidary and Mineral Society, Torrance Recreational Center, 3341 Torrance Blvd. Torrance, CA, Hours: Sat. 10 - 5, Sun. 10-4, Roger Mills (310) 377-6226, Email: [roger\\_mills@acm.org](mailto:roger_mills@acm.org), Website: <http://www.palosverdes.com/sblap/>

**April 17, 18, & 19 2009, San Jose, CA**, 54th Annual CFMS Show, Nature's Showcase, hosted by the Santa Clara Valley Gem & Mineral Society, Santa Clara County Fairgrounds, 334 Tully Road, San Jose, Hours: 10-5 Daily, Frank Mullaney (408) 265-1422, Email: [info@scvgms.org](mailto:info@scvgms.org), Website: [www.scvgms.org](http://www.scvgms.org)

**May 30 -31 2009, Glendora, CA**, Glendora Gems, 859 E. Sierra Madre Ave. Glendora, Hours: Sat. 10 - 5, Sun. 10-4, bonnie Bidwell (626) 963-4638, Email: [Ybidwell2@aol.com](mailto:Ybidwell2@aol.com)

**November 7-8 2009, Lancaster, CA**, Palmdale Gem & Mineral Society, Antelope Valley Fairgrounds, 2551 W. Ave. H, Hwy 14, Hours: 9 - 5 both days, Susan Chassin-Walblom (661) 943-1861, Email: [SLChaisson@yahoo.com](mailto:SLChaisson@yahoo.com), Website: [palmdalegems.org](http://palmdalegems.org)

## FEDERATION SHOWS IN 2008

Rocky Mountain Federation (RMFMS), October 31 - November 2, Tulsa, OK

## Upcoming Field Trip Opportunities

Contact Dean Welder, at email fieldtrips@scvgms.org. Email is the best way to contact him. If you can not email, then call him for information about the following field trips. His phone number is located in our club directory. Many of these trips are sponsored by clubs other than SCVGMS, so contact Dean who will make the appropriate introductions for SCVGMS members to be able to attend.

October 25, Goldbug and Old Priest Gold mines in Placerville. Cost \$15.00. Must RSVP by October 17. Email or call for more info.

---

## Noteworthy Museums

by Ruth Bailey

Montella and I went to Oregon last month on our (pretty much) yearly trip to visit family and we had a great trip. We visited a couple of museums that I wanted to tell you about because they are certainly a wonderful place to visit.

The first one was the Crater Rock Museum in Central Point, Oregon. The museum used to be outside of town, but they have built a wonderful new building and have fantastic displays from a collection which was left to them.

The other place we were really amazed by was the Chapman Gem & Mineral Shop and Museums. This was located 4 miles south of Fontana on Highway 101. They had really spectacular displays from all over the world. If you are ever in the areas, we certainly hope you will have time to stop in and see these collections.

---

## A Beginner Guide to Quartzsite

by Terry Caskey, CCM&G member, via Diablo Digger's, 12/07

Have you heard of Quartzsite and don't have any idea what it's all about? Well, I suppose that everyone who goes there has a different experience, but everyone with an interest in gems, minerals, rocks, junk, RV's, old books, rockhounds, camaraderie, or desert scenery should go there sometime.

Some people go year after year, but I've only been there a few times. Quartzsite is located in the Arizona desert, a few miles past the California border

on the way from Palm Springs to Phoenix. The first time I saw it was mid January 2003. We were driving east on I-10 in Arizona and topped a hill that overlooked the valley. Below was a small town with a couple of gas stations surrounded by thousands of motor homes and trailers covering the desert floor for miles. The Chamber of Commerce claims 1.5 million people visit in the winter.

During the 1960's some of the "Snowbirds" who had been coming to the area for years started a group called the Quartzsite Improvement Association (QIA). They were interested in improving the town and bringing some structure to their winter life. One of their first fundraisers was a rock hound tailgate show in 1967, which apparently was quite successful. It has become the QIA Pow Wow, the center piece of activities the last Wednesday through Sunday in January. It is one of the largest rock hound gatherings anywhere; with a large building filled with world class display cases and more than 400 dealers both in the building and the surrounding Pow Wow property.

The town has grown a little since that first tailgate sale, with a few houses, a police and fire dept., a library, some stores, RV campgrounds, restaurants, etc. The summer population is probably no more than a thousand or so, but during the winter there are tens of thousands of people in the motels and camped in RV's all over the desert for miles in every direction. Many clubs and other groups camp together on the BLM land surrounding town. We stayed with the Old Timers Gem and Mineral Club, north of town in a free area. Some places closer to town require a small camping fee.

In addition to the Pow Wow, there are many other dealers and vendors selling jewelry, rocks, rough material, crafts, fossils, stuff, things, crystals, and whatever. If you really want it, you probably can find it in Quartzsite. These dealers operate between early December and the end of February. Toward the end of January, they set up an enormous tent and hold a huge RV and sports equipment show followed by a Hobby Craft and Gem Show then a Classic Car show in early February.

If you get tired of going to shows and flea markets, there are many other things to do and see around Quartzsite. Ye Olde Timers Gem and Mineral Club has a charity auction towards the end of January and the QIA offers classes and field trips to the surrounding area. The sunsets are often spectacular if you are interested in photography, and if you like old, used books, check out the Readers Oasis.



## How Will You Answer?

by Chuck Boblenz, SCVGMS member

If someone were to ask you why you joined our Society, what would be your answer?

I think that the majority answer would be that we collect, or, better yet, we have collections. Some of you may differ from me on this, but bear with me a moment.

Take a look in your living room or family room. Do you find a grouping of items you really enjoy and have them grouped together in one of these places?

Could they be minerals, fossils, artifacts collected on memorable field trips? Or, are they jewelry pieces, carvings, faceted stones, cabochons, intarsias, or beading projects you have accumulated over the years.

If you have said 'yes' to any of these questions, then you join all the rest of our members and are a candidate to put a show case into our show in April.

No. Do not shudder and get alarmed that you can not do such a thing. I have great confidence that your group of items are nicely arranged in your home and have gotten favorable comments from your friends and family; so you already have a good start toward a case of your favorites.

Next, let us adapt your display into a case. Our Society has show cases ready for your use. Their dimensions are 2 feet deep, 2 feet high and 4 feet wide and drawings are available for making liners that will fit inside the case and will appear in the BRECCIA. These liners can be made of cardboard, door skins (1/8 inch ply), or other ply's. Door skin material is the most durable and is also one of the lightest to use.

Next go to a material goods store and purchase some material that will enhance the items you will show. Material that allows a bit of stretch is the preferred material so that it can be stretched over your liners.

The cases use two 75-watt bulbs to illuminate the case, so I recommend that a coat of white primer or paint be put on the liners before covering them. This will prevent the texture of the wood or cardboard from showing through when the case has its lights on. Next make arrangements to borrow a case from the Society to take home with you allowing you to make sure that the liners work well for you; it allows you to experiment with your layout to show your prized specimen or handiwork to its best.

You will be surprised at how time will fly by, and soon our show will be just around the corner. So plan now to share your collection with your fellow members and the general public.

Who know, but your case and the manner you choose to display it might cause some new people to become interested with similar collections and may wish to join our hobby.

So what will your answer be: Will you put a show case into our show? Go ahead and sign up today; I believe you will enjoy sharing your collection with others. I hope to see your case soon.

## Safety Thoughts - Safety Is No Accident

by Ellery Borow, EFMLS President,  
from EFMLS News, 12/07; via Gem Cutters,12/07

Yes, the title of this article sounds like an industrial strength safety slogan...but it is also true. Safety requires us to exert a concerted effort to ensure that it happens. Safety does not happen by coincidence.

Have you been following past EFMLS Safety Chairman, Bill Klose's- Safety First articles up to now? Over the past 7 years or so, Bill has been writing a great, in-depth, and very technically detailed series of articles on all manner of safety issues covering most of the aspects of the things we rockhounds routinely do - such as participate in field trips, attend shows, use rock collecting tools and lapidary machines, and work with torches. Hopefully every club safety chairperson has read, implemented, and kept on file a copy of all of Bill Klose's articles. Perhaps you noticed that Bill's articles were repeated from time to time. Safety issues bear repeating. Repetition makes for a safer membership.

As most safety chairpersons no doubt understand, it's one thing for a club to have access to safety information. It stands as quite another issue to have club members take safety instruction to heart. Some folks listen with an undivided attention to safety issues and some do not.

The lessons of being safe are clear - it is common cent\$ to do what we do in as safe a manner as possible. By common cent\$ I'm not referring to the loose change in one pocket or purse. I'm instead referring to the costs associated with being safe compared with being unsafe.

Let's cover some examples of safety costs -

1. Cost of a pair of goggles \$2.00 to \$5.00 Cost of eye surgery to repair damage from a flying shard of quartz...well, you don't even want to think about it.
2. Cost of watching where you are walking - \$0.00. Cost of a broken leg (or worse) - Perhaps a thousand or two...but could be more.
3. Cost of a pair of good strong gloves - \$5.00 to \$15.00. Cost of a cut finger - a bandage... not too much, but think of the effort required to clean up from the cut finger on your specimens.
4. Cost of carefully preparing to go to a new, never-visited quarry - some time to do research -\$0.00. Cost of getting lost or injured from a poorly planned trip - besides the embarrassment, this could be very expensive.
5. Cost of a sledge hammer handle... well, I think you get the point.

Countless more examples exist to illustrate the effectiveness of planning to be safe. It just makes common cent\$ to be safe. Making safety an economic issue may help some of our members appreciate the value of safety. We all know safety is important; it's just that some folks need more reminders than others. It's those who need repetition, repetition, repetition.

## CFMS Meeting Report

by Ruth Bailey, SCVGMS Federation Director

We attended the CFMS Show and Convention in Ventura, and it was a good show. At the CFMS meeting, our bid to host the 2009 show next April was received and voted on. So we are going to be doing the next CFMS show, and all of us are very ready to do the work and put on the best show ever.

At the meeting there were two new Societies joining, and the Tehachapi Valley Society re-joined. The new Societies are the Volunteers for Minerals, located in Fallbrook, California, and the Northern California Geological Society of Hercules, California.

The CFMS Scholarship Committee reported that we have given grants of over \$150,000.00. With the over one million that the AFMS Scholarship Foundation has given, I feel that we have every right to be proud of our record. This, of course, is in addition to the amount that our Society has given, and a good many other Societies have their own scholarship program. The CFMS Scholarship Committee has invited the member societies to submit nominations for CFMS Scholarship recognition. The person(s) selected will be given the opportunity to choose a school for a scholarship grant. It is easy to make a nomination, and if you feel that you know someone who deserves this award let me know. I can give you further information about the process.

The Long Range Planning Committee reported that the CFMS representative to the AFMS next year will be Colleen McGann of the Peninsula Gem & Geology Club. Colleen will be serving as the 5th Regional Vice President.

Our Ed and Eileen Ferner entered their Educational case in competition, and it was very well received. They did a great job on it and received 97 points. They also received the Barranca Educational Trophy. One of our new members (last month), Leo Lu, entered his case of intarsia jewelry and won a plaque in the Advanced Class.

In 2009 Camp Paradise will take place from May 17th to May 23rd. Camp Paradise applications will be in the November 2008 CFMS Newsletter and on the CFMS Website. Camp Zzyzx will be moved to November 15th to November 22nd, and their forms will be available in February, 2009, on the CFMS Website.

The next CFMS meeting will be in Visalia on November 8, and we will be handing out the registration packets for our show in April, 2009.

From the desk of Shirley Leeson,  
AFMS President

### **We need your help! Please respond immediately!**

On July 29, 2008 I received information from Wendell Mohr (AFMS Commemorative Stamp Project) that U.S. Congressman John Culberson, R, from the 7th district (West Houston, Texas) regarding the Paleo Bill H.R. 554. He is trying to either stop the bill or change it. He asked for our help.

I immediately contacted everyone on our email list both in San Diego and Idaho. I forwarded the information Wendell has supplied me. I also talked directly to assistant to the Congressman, Brittany Hooten.

They asked us to do a "grass roots" movement to help him stop this bill. Helping me was John Martin, CFMS Public Lands Advisory Committeeman from Southern California. We contacted everyone we could think of. The response was abysmal. Only a few responded. SO NOW WE HAVE A FIVE WEEK WINDOW WHILE CONGRESS IS CA-VORTING ON THEIR VACATION ONCE AGAIN...

Here are a few things you can mention when you contact your congressman:

1. Tell them you are a rockhouser/amateur collector.
2. Tell them that as the bill stands, we can be put in jail for picking up a rock that might look like a fossil to the "untrained eye" of a BLM or Forestry person. Which will result in the confiscation of your vehicle and all equipment and the burden of proof will be on you in court.
3. Amateur collectors have been responsible for many of the finds of important fossils over the years. All this will now stop.
4. Fossils are not renewable. Once fossils are exposed by wind and rain they will disintegrate. Professional paleontologists usually don't have the time, the money, or the staff to check out paleo sites found by amateurs, but they don't want us to collect them either.
5. This bill is a disaster for rockhounds, and I urge you to stop it.

One last thing: please contact me with your name, city, state, and the name of the congressman you contacted. I'd like to know who responded to this emergency.

# Falcon's Eye

via Mendo Coast Gems, 6/04; via Tumbler, 2/04, via PGGS, 4/03

The Finnish feldspar Spectrolite or Labradorite, is truly a fascinatingly beautiful mineral, whose charm is not fully noticed unless viewed from the proper position. Generally a dull, dark-looking mineral, it has no special virtue until the colorful *schiller* is observed glowing on the surface. Labradorite can produce a colorful play of light across cleavage surfaces and in sliced sections, called *labradorescence*. The usually intense colors range from the typical blues and violets through greens, yellows, and oranges. Some rare specimens display all these color simultaneously.

The color display is from lamellar intergrowths inside the crystal. These intergrowths result when chemistries compatible at high temperatures become incompatible at lower temperatures, thus separating and layering the two phases. The resulting color effect is caused by a ray of light entering a layer and then being refracted back and forth by the deeper layers. This refracted ray is slowed by the extra travel through the layers and mixes with other rays to produce a light ray coming out that has a different wavelength than when it went in. The wavelength could correspond to the wavelength of a particular color, such as blue.

The effect depends on the thickness and orientation of the layers. Too thick or too thin, no color; viewer or light at the wrong angle, no color. Labradorescence is truly a one of a kind mineralogical experience that must be observed in person.

## Orienting Obsidian, Labradorite, and Spectrolite

by Jim Small, Small Wonders Lapidary via the Yahoo Lapidary List, via Gem Cutters News, 11/2006

### Obsidian:

Orienting obsidian depends on what type of obsidian and what you are doing with it. If you are polishing flats, the best way to orient rainbow sheen obsidian is 10-15 degrees off the plane of the parallel bands. If you are cabbing it, cut it exactly parallel to the bands. Gold sheen is always cut parallel to the bands or the effect is lost or diminished. Fire obsidian sometimes loses its fire sheen when cut parallel and should be cut after careful examination of the best angles for viewing the fire which is actually in between bands. Other types of obsidian look

different when cut at different angles to the bands; midnight lace is one such example, where you should experiment until you find the "look" that pleases you.

### Labradorite/Spectrolite:

Here is a procedure for orienting labradorite/spectrolite. It will also do a credible job with moonstone. With most sunstone (India and upstate New York), orientation is simpler because you will just orient for the schiller (metallic flecks).

1. Get a student desk lamp; what we used to call a high-intensity lamp. They usually have a switch for two brightnesses, and they always have clear glass bulbs (this is important).
2. Fix a high shelf where you can put your lamp, so that you can adjust the arm to have the beam of light shine straight down onto a flat surface which needs to be no higher than thigh-high. A stool or flat-top crate will work fine.
3. Get a tin, like one of the tins which Danish butter cookies come in; it should be anywhere from 8" or 9" in diameter up to 12" in diameter, and between 2" and 3" deep. Fill this tin about 3/4 full with sand or fresh kitty-litter or any other finely granular material.
4. Get a really good quality waterproof marker. It should be at least 6" long, and ought to have a relatively fine (no more than 1/8") point. Round-nose markers work fine as long as they haven't been squished by pressing too hard.
5. Stand on the opposite side of the stool/crate from the shelf with the lamp. Adjust your stance and the lamp so that you can look straight down on the middle of the tin while the lamp shines its beam straight down above the top of your head, without your head occluding the beam.
6. Place a piece of mono-crystalline labradorite in the granular material in the tin, so that at least 2/3 of it is above the supporting grains. If you have polycrystalline pieces of labradorite, you either have to cut them apart along the crystal boundaries or go for the largest, showiest crystal and trash the others.
7. Slowly rotate the labradorite until you see a flash of color; once you locate a flash, slowly spin the piece until you have the very brightest flash showing right on top. After you have the brightest surface centered, rest your permanent marker on the top edge of the tin, and drag it slowly around the piece, leaving a mark all of the way around. This mark should be parallel to the top flash.

*continued on page 12*

8. Slice your crystal parallel to the mark to cut slabs which will produce finished cabs with a broad color flash over their top surface. Some labradorite will behave like moonstone and have the capability of producing a floating eye in a cut cab. To test whether your stone has this capability, take the following additional steps.
9. Place the stone on its side, so that the marker line is straight up toward your eye. Slowly rotate the stone, keeping the line in vertical orientation. When you see another flash (it will be distinctly weaker than the broad flash which you already marked), test its location by slowly revolving the stone from left to right or vice versa until you have the best flash firmly centered on the top of the stone. It should be somewhere on the first line; if it isn't, start over from the beginning.
10. After the second flash is firmly centered, draw another line in the same fashion as the first one. The two lines will not meet at the 90 degree angle, but nearly so.
11. Slice the crystal parallel to the second line to produce a floating eye in your finished stone.

Now to make things really interesting, there is some labradorite from Labrador that not only has labradorescence, but it also has schiller. In effect, it is labradorite/sunstone. If you have any of this material, you will see the small metallic flecks show up when you do the first orientation. If you have this material, don't bother to look for the floating eye because the schiller is much more rare as an optical phenomenon.

You can get into really fancy tricks with the orientation if you want to, like having pendant stones that flash only when they are hanging on someone. Labradorite is not recommended as a ring stone, nor as bracelet stone: it is much too soft and tender for anything that rugged. Also, since it is a feldspar, it has perfect cleavage in two directions; a sharp rap will cleave it.

## Fairgrounds Development Update

by Chris Cherry, Chairman of the SCVGMS  
Fairgrounds Development Oversight Committee

The Santa Clara County Board of Supervisors met on September 9, 2008. The Board authorized the Administration to enter into exclusive negotiations and create an Exclusive Negotiating Agreement with Catellus, the recommended firm from the developer Request For Proposals selection process. A report regarding fairground usage was presented and accepted by the Board. The report contained actual counts of and figures from events held at the fairgrounds in 2007 and 2008. It also contained several projected counts and figures for events previously held and booked in the remainder of 2008. The original request for this information was not explained or identified. The value of this data and any bearing on decisions at hand was not clearly understood by the audience.

Approximately twenty members of the community addressed the Board and voiced concerns regarding the selection process, requesting the negotiations with Catellus be delayed. Speakers requested that the Board fulfill their commitment to meet with the community in upcoming outreach sessions before entering into negotiations. June Harris presented a copy of our letter of introduction, originally sent to the Morley Bros, and high level venue requirements to the Board for review. The Board voted to move forward with engaging Catellus to facilitate the community outreach process during a meeting on October 22, 2008.

On September 15, 2008, the County Board of Supervisors and the City of San Jose met for an annual Joint Session. Catellus spokespersons presented an update on the Fairgrounds Development project. County and city officials reached a common understanding regarding next steps in the project, community outreach efforts, and a projected time line including deliverables.

The next scheduled meeting will be a community outreach workshop with the County Board of Supervisors on October 22, 2008 at 6:30 PM. The public is invited to attend at the County Government Center - East Wing, 70 West Hedding Street, San Jose, CA 95110.

# Famous Petrified Forests

by Dick Young

from Music City Rockette, Feb. 2002; via Gem Cutters News, Nov. 2005.

Our petrified forests are generally of three types. The first type has been showered and completely covered by volcanic ash leaving the trees standing in an upright position. The Petrified Forest of Yellowstone National Park is an example of this type. The trees are standing in their original state where they grew many millions of years ago. The forest of Yellowstone covers more than 40 square miles which is the largest area known. Another unusual feature of the Yellowstone Petrified Forest is that many thousands of fossilized leaves, needles, cones, and seeds of over one hundred different kinds of trees and shrubs have been found there. It is the only place in the world where twenty-seven successive layers of petrified forms can be seen.

The story behind Yellowstone Petrified Forest is that an old volcano began to erupt and continued for some twenty years. Mineral-bearing waters had begun to petrify the once living forest. In the span of a couple of years, a new forest began to appear and grew for the next five hundred years. Then the old volcano erupted again. The process reoccurred twenty-seven times as twenty-seven distinct layers of buried forest have been exposed in the fossil forest on the south side of Larmar River Valley. An example of a well-preserved stump can be seen a few feet from the highway along "The Petrified Road." Along two-thirds of the way up on the eastern edge is a group of upright standing trunks of unusual beauty and size just as they grew many millions of years ago. The largest of these petrified stumps is a redwood over five feet in diameter and believed to be approximately one thousand years old when buried by volcanic debris.

A second type of petrified forest is believed to be the result of logs jamming at the mouth of a river, sinking into the mud, and becoming petrified. The Petrified Forest of Arizona is an example of this type. Driftwood may be deposited on the shore by the winds. Generally fossil wood which at one time was driftwood does not have bark. The fact may account for the lack of bark on the wood in Arizona.

The Arizona forests are between one hundred and two hundred million years old. One stone log, twenty feet wide and forty feet thick, flung across a ravine forms a natural bridge - the famed Agate Bridge.

The Arizona forests are composed of different forests varying in coloring. The Rainbow Forest is a multiplicity of colors, the Blue Forest is mostly carbonized sections, and the Black Forest is brilliantly black. Many logs are white, some almost transparent, and make up the Second Forest, while the Third Forest displays large specimens as long as one hundred sixty feet.

The fossil wood is of three general types.

1. Jasperized wood predominantly bright red, some translucent, and variegated with a riot of colorless.
2. Small amounts of bright red wood are found, often with areas of nearly colorless quartz.
3. Section of dark or nearly black wood.

The opalized wood forests of central Washington run a close second to the famed forests of Arizona. An outstanding feature in Washington is that the only fossilized ginkgo trees known in the world are found there. The well-known Ginkgo Petrified Forest is of the driftwood type, of the ten thousand fossilized trees in this forest; only six have been identified as Ginkgo trees. The Ginkgo is one of our oldest and most primitive types of trees, a direct ancestor of our modern tree, and is remarkable in that it has survived through millions of years while other species have died out.

Nevada boasts of the largest petrified tree known in the world. It is fourteen feet in diameter and nearly three hundred feet long. Another distinction in Nevada is that the woods of Virgin Valley are fully opalized with the "fire" of the fire opal.

A third type is that of scattered woods may be covered in some manner, to become solidified later. For instance, rising water in a lake may completely cover a forest and protect it from decay. Later on petrification may preserve the trees permanently. Some of the woods in California, Nevada, Oregon, and central Washington have this origin.

## Cutting Palm Wood

from the Lapidarian, Sept. 05, via Morocks, June 05; via Strata Gems, July 07.

There are three ways to cut palm root, and each will give a different effect. All palm roots seem to have a ring of agate around the eye and a colored center.

1. Cutting down the center gives a striking wood-stained effect, but does not show the eye.
2. Cutting across the center brings out the round eye.
3. Cutting diagonally across the roots produces an elliptical eye effect.

## Fossil Identification

by Debbie Bunn – Fossils for Fun Society  
via The Rollin' Rick, August 2005, from Dinny's Doin's, September 2002

Diagnostic points for fossils:

- Teeth: Enamel preserves very well and is distinctly shiny. It is rarely preserved as a cast of an impression. Ivory shows crosshatching.
- Wood: The presence of grain and/or cell structure is needed. A lot of "wood" is just "probably wood". Bark is very rarely preserved.
- Bones: Full of holes in 3-D. Irregular holes, not dots. If petrified, bones clink against your teeth. They should match known bones in the body—scapula, toe bone, etc.
- Leaves: veins should be visible. Be suspicious of discolorations along a crack. There should be some depth to the leaf, not just a surface feature.

In general fossils should look like a known something. You should be able to find a picture, or other people should recognize it. Be conservative, it is not a fossil until you prove it is a fossil.

Know your "false fossils" — dendrites, Mojave agate/ bone, "petrified Chihuahuas". Soft tissue only preserves in very special circumstances.

Fossils are found almost always in sedimentary rock. So know your matrix. Fossils may be found in the heart of a concretion, but not geodes or thunder-eggs. Fern fossils do not occur in the middle of agate. Moss agate is not a fossil. Neither is "chicken track"!

## Rocky Five

Owner Frank Mullaney,  
SCVGMS member

(408) 266-1791 or (408) 691-2656

We are suppliers of the following:

Barranca Lapidary Equipment  
Diamond Sanding Belts  
Cabochon Machines and Supplies  
Diamond Blades  
Trim Saws and Large Slab Saws  
Wet Polishing Machines  
Diamond Core Bits.

Tumblers and Tumbling Supplies  
Grit and Polish

Other Lapidary Supplies

Bookends

Pen Bases

Engraving for Club Name Badges

## Peregrine Rocks and Trading Post

Owners- Dean and Karen Welder  
SCVGMS Members

<http://www.peregrine-rocks.com>

Great deals on Estwing Hammers  
and Chisels and the Gem Scoop

Also available are Vibrating Tumblers  
and Tumbling/Polishing Grit

And the "NEVER LOSE IT AGAIN"  
Bright Red Field Collecting Bag!

SANTA CLARA VALLEY GEM and MINERAL SOCIETY  
GENERAL MEETING MINUTES  
September 23rd , 2008

President Randy Harris called the meeting to order at 7:45 PM at the Belwood Cabana Club in Los Gatos. Members and guests were welcomed. Minutes were approved as printed in the Breccia. The next board meeting will be at the home of Randy Harris, Sept. 25th, 7:30 pm.

CORRESPONDENCE: Searles Lake Gem & Mineral Society show letter, The Gem Shop calendar and dvd ad.

NEW MEMBERS: Mary Karas, David Lowe, JeanMarie Finnegan, Leo Lu, and Marilyn Barnes were presented with their membership packages and welcomed to the club.

HOSPITALITY: There were 45 members and 5 guests in attendance tonight.

SUNSHINE: Ernestine Smith is reported to be sick.

NOTICES:

Installation Dinner and time and talent sheets need to be turned in.

NBFT meeting on October 11th.

Repair Cases day at Ruth Bailey's home on October 4th.

Jade Bus trip on Oct 11th.

Demo day on Oct 25th.

October meeting Pot Luck - bring a main course, salad, side dish or dessert, starts at 6:30 (come early to help with the set up ) before the regular meeting

The old Gems Galore store is suppose to reopen on Oct 1st.

There is a sign up sheet for car window signs, contact Frank Mullaney.

Fairground development: The County Board of Supervisors meets on Oct 22nd.

NOMINATION COMMITTEE: Frank Mullaney, June Harris, Gail Matthews.

STUDY GROUPS: See details in the Breccia for all groups. Contact the group leader for info and time.

Faceteers will be on a break from July until October.

Mineraleers will be at the home of Michael Paone .

Cutaways will be on October 18th (the third Saturday)

Fossileers will meet at the next demo day.

Jewelry group will meet at the home of Mark Mullaney.

Smithies have a new sign up list.

Stringers have a new project.

FEDERATION: AFMS meeting was cancelled.

PLAC: See Frank's message in the Breccia.

SHOW: There are still jobs open for the CFMS show.

MEMBER DISPLAY: See Breccia.

FIELD TRIPS: See details in the Breccia. E-mail Dean Welder for any info.

PROGRAM: Intarsia, with a presentation of work and a talk by Leo Lu.

Meeting adjourned at 9:30 pm.

Respectfully submitted,

John Eichhorn, Secretary

Santa Clara Valley Gem and Mineral Society  
Board Meeting Minutes  
September 25th, 2008

President Randy Harris called the meeting to order at 7:30 pm at the home of Randy Harris. All board members were present except Matt Wood , RK Owen, Michael Paone, and Parliamentarian Dean Welder. M/S/P to approve the July and August board minutes.

**Correspondence:** Letters from: Dodge and Cox fund semi-annual report, Office Max discount letter, show dealer returned letter, Peninsula Library information letter, Jessica Kerman thank you letter, Rocks and Gems listing post card.

**New Members:** M/s/p to accept Bill Simpson, Frederick Fisher, and Joe Lattuada as new members.

**Treasurer's Report:** M/s/p to approve the bills. CD account was renewed.

Delinquent dues list printed by the treasurer.

**Unfinished Business:** Mark Mullaney to check on a referral for the endowment fund.

The nominating committee will meet on Oct 13<sup>th</sup>.

**SHOW 2009:** various show items were discussed.

Scholarship schools will be asked for pendants to display in the scholarship booth.

M/s/p to adjourn at 8:40 pm.

Respectfully submitted,

John Eichhorn, Secretary

Santa Clara Valley Gem and Mineral Society  
Treasurer's Report  
September 25, 2008

Beginning Balance:		\$10,380.29
Receipts		
Dues	\$100.00	
Member dues and initiation fees	45.00	
Interest	9.12	
Total Receipts	\$154.12	
Disbursements		
Kids Area, Potluck, BBQ, copying	\$ 202.16	
Insurance	250.00	
RTC Bus Trip	1,265.62	
Postage for Breccia	32.45	
September meeting refreshments	16.90	
Building rental	220.00	
Expressions	122.21	
Total Disbursements	\$2,109.34	
Ending Balance		\$ 8,425.07